

ASTON CHASE



ST JOHNS WOOD PARK

St Johns Wood, NW8

ASKING PRICE

£2,500 per week

ASTON CHASE

ST JOHNS WOOD PARK

A bright and modern five bedroom family house arranged over three floors. Offered in excellent order, the property has been finished to the highest specification in a contemporary style, and provides well-planned and comfortable living accommodation.

Discreetly set back from the road behind secure gating, the property benefits from off street parking and a pretty patio garden.

ACCOMMODATION

- Large entrance hall
- Reception room
- Dining area
- Large eat-in kitchen
- 5 bedrooms
- 3 bathrooms
- 1 guest w/c
- Guest cloakroom
- Patio garden

AMENITIES

- Off-street parking
- Low built
- Detached



ASTON CHASE



ASTON CHASE



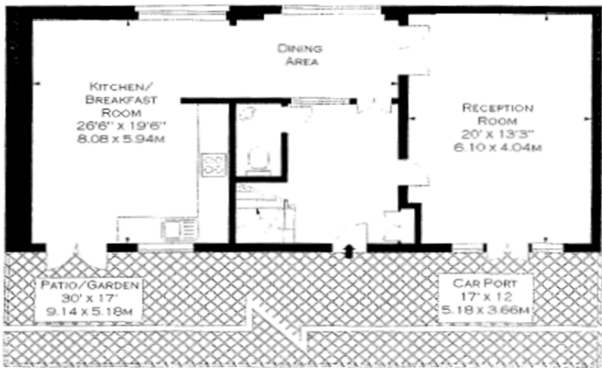
30 ST. JOHN'S WOOD PARK, NW8
APPROX. GROSS INTERNAL AREA *
2229 FT² · 207.07 M²



SECOND FLOOR



FIRST FLOOR



GROUND FLOOR

Score	Energy rating	Current	Potential
92+	A		
81-91	B		
69-80	C	69 C	80 C
55-68	D		
39-54	E		
21-38	F		
1-20	G		

IMPORTANT NOTICE

These particulars are a guide given in good faith and are believed to be correct at the time of printing. Aston Chase give no representation as to their accuracy and potential purchasers or tenants must satisfy themselves by inspection or otherwise as to their correctness. No employee of Aston Chase has authority to make or give any representation or warranty in relation to this property.

67-71 Park Road
Regent's Park
London NW1 6XU

020 7724 4724
astonchase.com

