

ASTON CHASE



THE HENSON
Oval Road, Camden, NW1

ASKING PRICE
£TBC per week

ASTON CHASE

THE HENSON

PROPERTY VIDEO AVAILABLE

A must see for loft lovers is this gorgeous 2 bedroom apartment with private terrace, in a portered building in the heart of Camden and Primrose Hill. Exposed brick walls, wood flooring, and a terrace right over the canal.

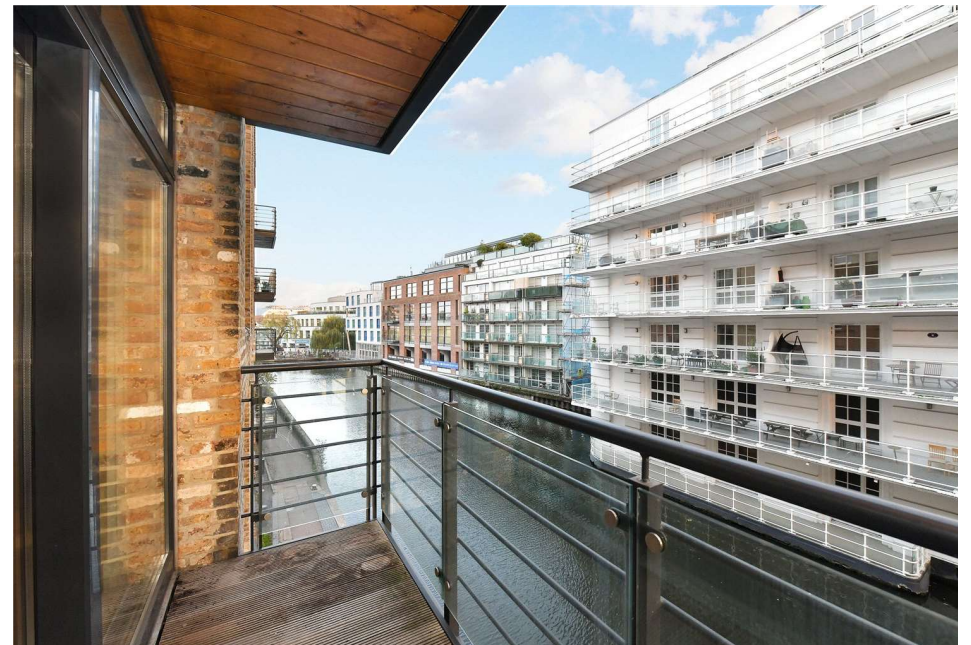


ACCOMMODATION

Principal Bedroom with En-Suite Bathroom, 2nd Bedroom, Family Bathroom, Open Plan Kitchen/Reception Room

AMENITIES

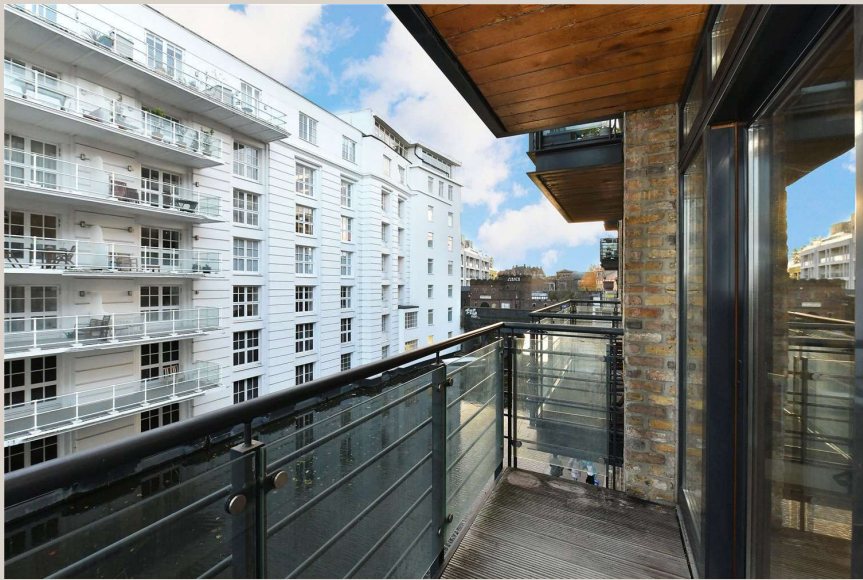
Terrace



ASTON CHASE

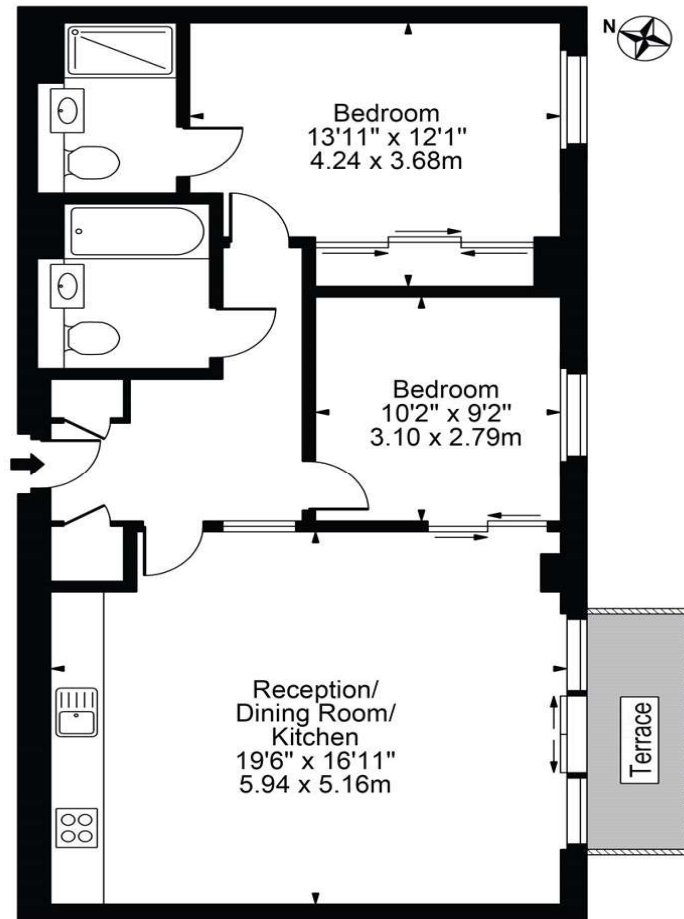


ASTON CHASE



The Henson

Approx. Gross Internal Area 783 Sq Ft - 72.74 Sq M



First Floor

For Illustration Purposes Only - Not To Scale

This floor plan should be used as a general outline for guidance only and does not constitute in whole or in part an offer or contract. Any intending purchaser or lessee should satisfy themselves by inspection, searches, enquiries and full survey as to the correctness of each statement. Any areas, measurements or distances quoted are approximate and should not be used to value a property or be the basis of any sale or let.

Energy Efficiency Rating		
	Current	Potential
<i>Very energy efficient - lower running costs</i>		
(92+) A		
(81-91) B	83	83
(69-80) C		
(55-68) D		
(39-54) E		
(21-38) F		
(1-20) G		
<i>Not energy efficient - higher running costs</i>		
England, Scotland & Wales	EU Directive 2002/91/EC	

67-71 Park Road
Regent's Park
London NW1 6XU

020 7724 4724

astonchase.com



IMPORTANT NOTICE

These particulars are a guide given in good faith and are believed to be correct at the time of printing. Aston Chase give no representation as to their accuracy and potential purchasers or tenants must satisfy themselves by inspection or otherwise as to their correctness. No employee of Aston Chase has authority to make or give any representation or warranty in relation to this property.