

ASTON CHASE



BOYDELL COURT

St. John's Wood, London, NW8

ASKING PRICE

£1,300 per week

ASTON CHASE

BOYDELL COURT

A beautifully presented three bedroom 1st floor apartment situated in this well maintained purpose built block with 24 hour portorage. The property has been recently refurbished with wooden floors throughout, and further benefits from communal hot water and heating, which is included in the rent.

Boydell Court is located within close proximity to the local amenities and underground stations of both Swiss Cottage and St John's Wood (Jubilee Line).



ACCOMMODATION

Principal Bedroom with En-Suite Bathroom, 2 Further Bedrooms (1 With En-Suite Bathroom), Family Bathroom, Reception/Dining Room, Kitchen

AMENITIES

Unallocated Parking on a First Come First Served Basis, 24 Hour Portorage, Lift, Air Conditioning, Pet Friendly



ASTON CHASE

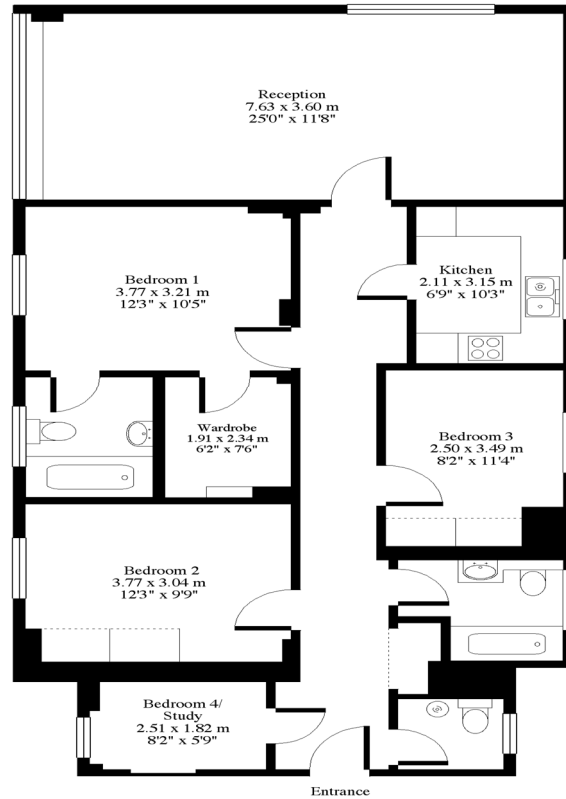
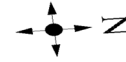


ASTON CHASE



Boydell Court St. Johns Wood Park, NW8

Approx. Gross Floor Area = 111 sq.meters • 1198 sq.feet



SECOND FLOOR

For illustrative purposes only. Not to scale. Prepared by Swan Photography 01435 863908

35BCSJWP

Score	Energy rating	Current	Potential
92+	A		
81-91	B		81 B
69-80	C	69 C	
55-68	D		
39-54	E		
21-38	F		
1-20	G		

67-71 Park Road
Regent's Park
London NW1 6XU

020 7724 4724

astonchase.com



IMPORTANT NOTICE

These particulars are a guide given in good faith and are believed to be correct at the time of printing. Aston Chase give no representation as to their accuracy and potential purchasers or tenants must satisfy themselves by inspection or otherwise as to their correctness. No employee of Aston Chase has authority to make or give any representation or warranty in relation to this property.