

ASTON CHASE



NORTHWICK TERRACE
St John's Wood, London, NW8

ASKING PRICE
£1,500 per week

ASTON CHASE

NORTHWICK TERRACE

A delightful 4 bedroom end of terrace town house (154sq m/1,652sq ft). This contemporary home benefits from an abundance of natural light, patio garden and separate garage.

Northwick Terrace is ideally situated within close proximity to the cafés and village amenities of Little Venice whilst within walking distance of Warwick Avenue Underground Station (Bakerloo Line), Lords Cricket Ground, the American School in London and to the open spaces of Regent's Park.



ACCOMMODATION

Principal Bedroom with En-Suite Bathroom, 3 Further Bedrooms, 2 Family Bathrooms, Fully Fitted Kitchen, Reception Room, Dining Room, Guest Cloakroom.

AMENITIES

Patio Garden, Separate Garage, Off Street Parking for 1 Further Car



ASTON CHASE

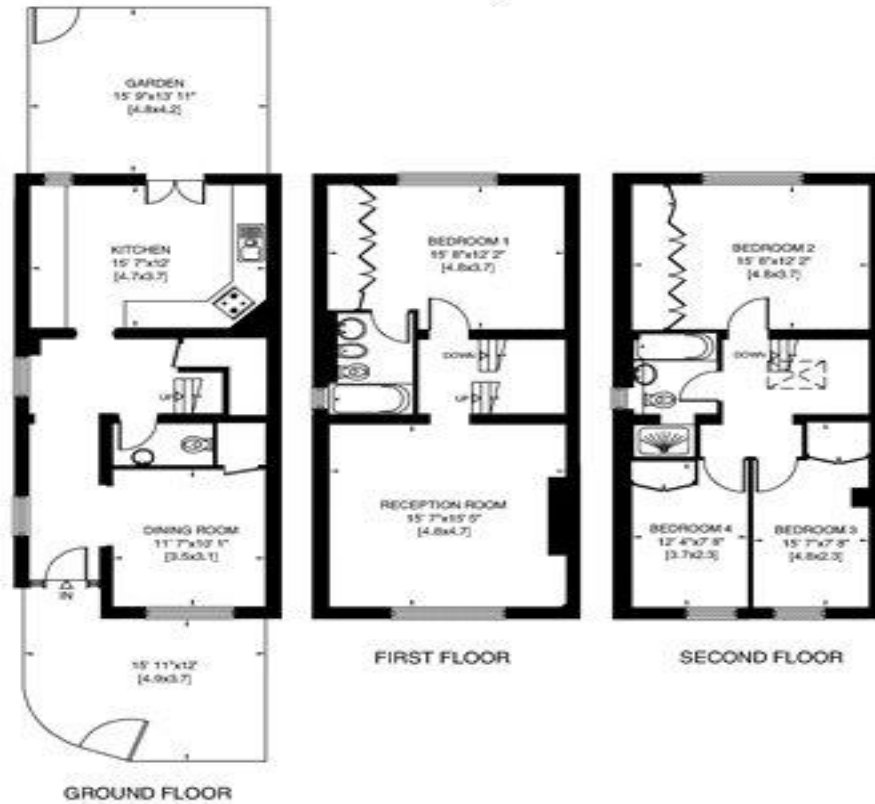


ASTON CHASE



NORTHWICK TERRACE LONDON NW8

Gross Internal Area: 154 Sq. metres
1652 Sq. feet



Energy Efficiency Rating

	Current	Potential
Very energy efficient - lower running costs		
(92+) A		
(81-91) B		
(69-80) C		81
(55-68) D		
(39-54) E	53	
(21-38) F		
(1-20) G		
Not energy efficient - higher running costs		
England, Scotland & Wales	EU Directive 2002/91/EC	

67-71 Park Road
Regent's Park
London NW1 6XU

020 7724 4724

astonchase.com



IMPORTANT NOTICE

These particulars are a guide given in good faith and are believed to be correct at the time of printing. Aston Chase give no representation as to their accuracy and potential purchasers or tenants must satisfy themselves by inspection or otherwise as to their correctness. No employee of Aston Chase has authority to make or give any representation or warranty in relation to this property.