

ASTON CHASE



BLLENHEIM ROAD
St Johns Wood, NW8

ASTON CHASE

BLENHEIM ROAD

A rare opportunity to rent a recently redecorated, low built detached house located in the heart of St John's Wood, which offers 2,215 sq ft / 205 sq m (GIA) of accommodation. Providing five bedrooms, three bathroom and a double reception room, this period property further benefits from a modern fully fitted eat-in kitchen, guest WC and private garden.

Blenheim Road is conveniently located for both St. John's Wood Underground station (Jubilee Line) and Warwick Avenue Underground station (Bakerloo Line), the American School of London and open green spaces of Regent's Park.

ACCOMMODATION

- Double Reception room
- Modern fully fitted eat-in kitchen
- Five Bedrooms
- Three Bathrooms
- Guest WC
- Study
- Private garden

AMENITIES

- Private Garden



ASTON CHASE



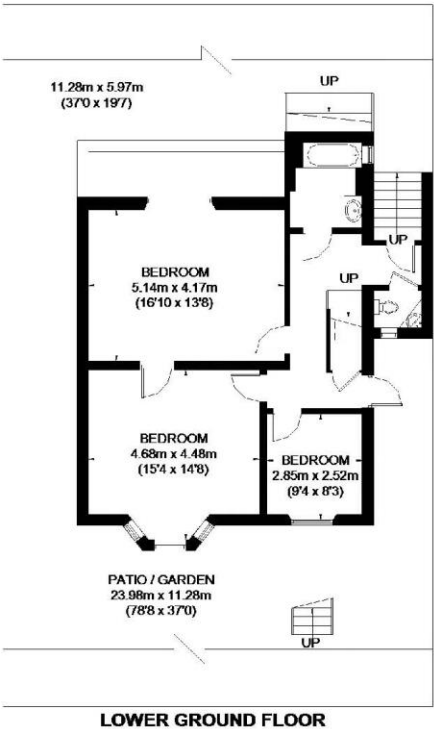
ASTON CHASE



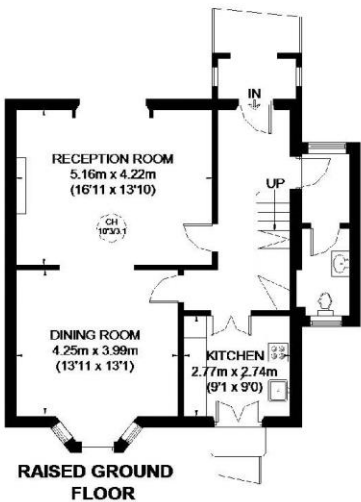
Blenheim Road, NW8



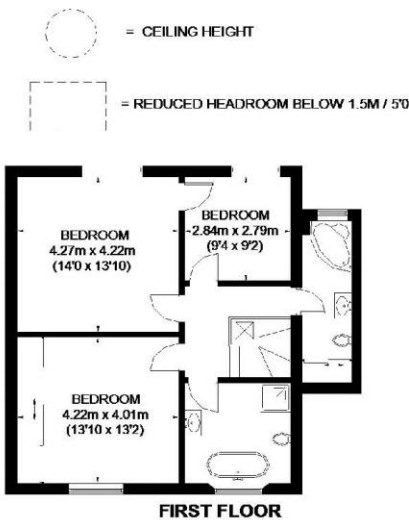
BLenheim ROAD



LOWER GROUND FLOOR

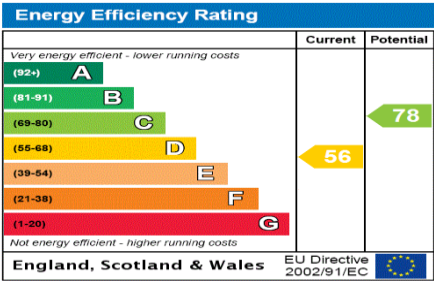


RAISED GROUND FLOOR



FIRST FLOOR

APPROXIMATE GROSS INTERNAL AREA
(EXCLUDING REDUCED HEADROOM)
LOWER GROUND FLOOR = 738 SQ. FT. (68.6 SQ. M.)
RAISED GROUND FLOOR = 744 SQ. FT. (69.1 SQ. M.)
FIRST FLOOR = 730 SQ. FT. (67.8 SQ. M.)
REDUCED HEADROOM
3 SQ. FT. (0.3 SQ. M.)
TOTAL = 2215 SQ. FT. (205.8 SQ. M.)



ASTON CHASE

IMPORTANT NOTICE

These particulars are a guide given in good faith and are believed to be correct at the time of printing. Aston Chase give no representation as to their accuracy and potential purchasers or tenants must satisfy themselves by inspection or otherwise as to their correctness. No employee of Aston Chase has authority to make or give any representation or warranty in relation to this property.