

ASTON CHASE



BOYDELL COURT

St. Johns Wood Park, London, NW8

ASTON CHASE

BOYDELL COURT

A beautifully presented three bedroom 8th floor apartment situated in this well maintained purpose built block with 24 hour portorage.

Boydell Court is located within close proximity to the local amenities and underground stations of both Swiss Cottage and St Johns Wood (Jubilee Line).



ACCOMMODATION

Principal Bedroom with En-Suite Bathroom, 2 Further bedrooms (One with En-Suite Bathroom), Reception Room, Family Bathroom, Kitchen

AMENITIES

Unallocated Parking on a First Come First Served Basis, 24 Hour Portorage, Lift, Air Conditioning, Pet Friendly



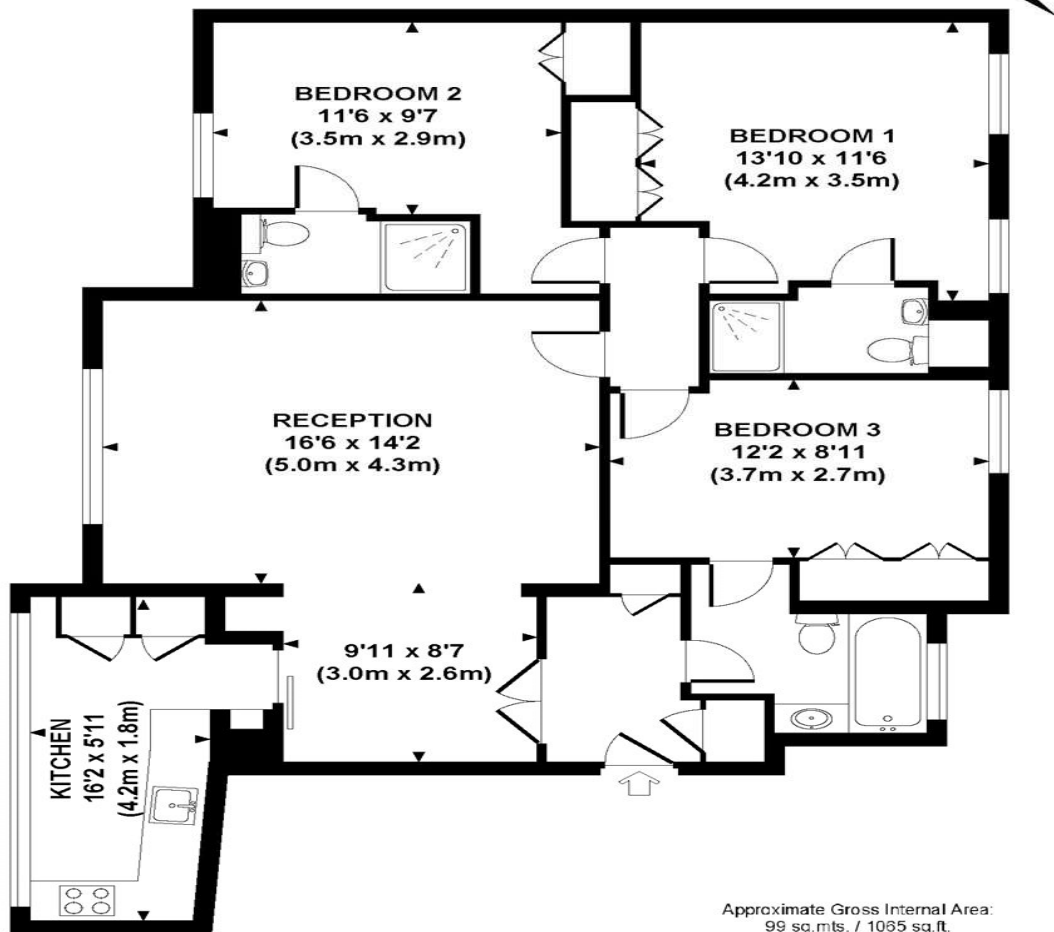
ASTON CHASE



ASTON CHASE



52 BOYDELL COURT
EIGHTH FLOOR



Approximate Gross Internal Area:
99 sq.mts. / 1065 sq.ft.

Although every attempt has been made to ensure accuracy, all measurements are approximate. The floor plan's for illustrative purposes only and not to scale. Measured in accordance to RICS standards. DE-PHOTOGRAPHY.NET

ASTON CHASE

| Score | Energy rating | Current | Potential |
|-------|---------------|---------|-----------|
| 92+ | A | | |
| 81-91 | B | | 81 B |
| 69-80 | C | 72 C | |
| 55-68 | D | | |
| 39-54 | E | | |
| 21-38 | F | | |
| 1-20 | G | | |

67-71 Park Road
Regent's Park
London NW1 6XU

020 7724 4724

astonchase.com



IMPORTANT NOTICE

These particulars are a guide given in good faith and are believed to be correct at the time of printing. Aston Chase give no representation as to their accuracy and potential purchasers or tenants must satisfy themselves by inspection or otherwise as to their correctness. No employee of Aston Chase has authority to make or give any representation or warranty in relation to this property.