



## INGRAM AVENUE

Hampstead Garden Suburb

London

NW11

Asking Price

£7,750,000

An impressive double fronted detached double fronted house (510 sq m/5,497 sq ft) set back behind a carriage driveway with off street parking for six cars and garage. The house is in immaculate condition throughout, offering generous accommodation with a magnificent 118 ft rear garden with a patio area and outdoor swimming pool.



# ASTON CHASE

67-71 Park Road  
Regent's Park  
London, NW1 6XU  
020 7724 4724  
[enquiries@astonchase.com](mailto:enquiries@astonchase.com)

[astonchase.com](http://astonchase.com)

## INGRAM AVENUE

Hampstead Garden Suburb  
London  
NW11

Ingram Avenue is situated between Winnington Road and The Heath Extension, and is within walking distance to Kenwood House and Hampstead Heath.

Asking Price

£7,750,000

Subject To Contract

Freehold





# ASTON CHASE

67-71 Park Road  
Regent's Park  
London, NW1 6XU  
020 7724 4724  
[enquiries@astonchase.com](mailto:enquiries@astonchase.com)

[astonchase.com](http://astonchase.com)

## ACCOMMODATION

- Principal Bedroom with En-Suite Dressing Room and Bathroom
- Five Further Bedrooms with En-Suite Bathrooms
- Reception Room
- Family Room
- Study
- Cinema Room
- Dining Room
- Kitchen/Breakfast Room
- Grand Entrance Hall
- Two Guest Cloakrooms
- Utility Room.

## AMENITIES

- 118 ft Garden
- Swimming Pool
- Off Street Parking for Six Cars
- Garage

COUNCIL TAX: H

EPC RATING: D





# ASTON CHASE

67-71 Park Road  
Regent's Park  
London, NW1 6XU  
020 7724 4724  
[enquiries@astonchase.com](mailto:enquiries@astonchase.com)

[astonchase.com](http://astonchase.com)





# ASTON CHASE

67-71 Park Road  
Regent's Park  
London, NW1 6XU  
020 7724 4724  
[enquiries@astonchase.com](mailto:enquiries@astonchase.com)

[astonchase.com](http://astonchase.com)





# ASTON CHASE

67-71 Park Road  
Regent's Park  
London, NW1 6XU  
020 7724 4724  
[enquiries@astonchase.com](mailto:enquiries@astonchase.com)

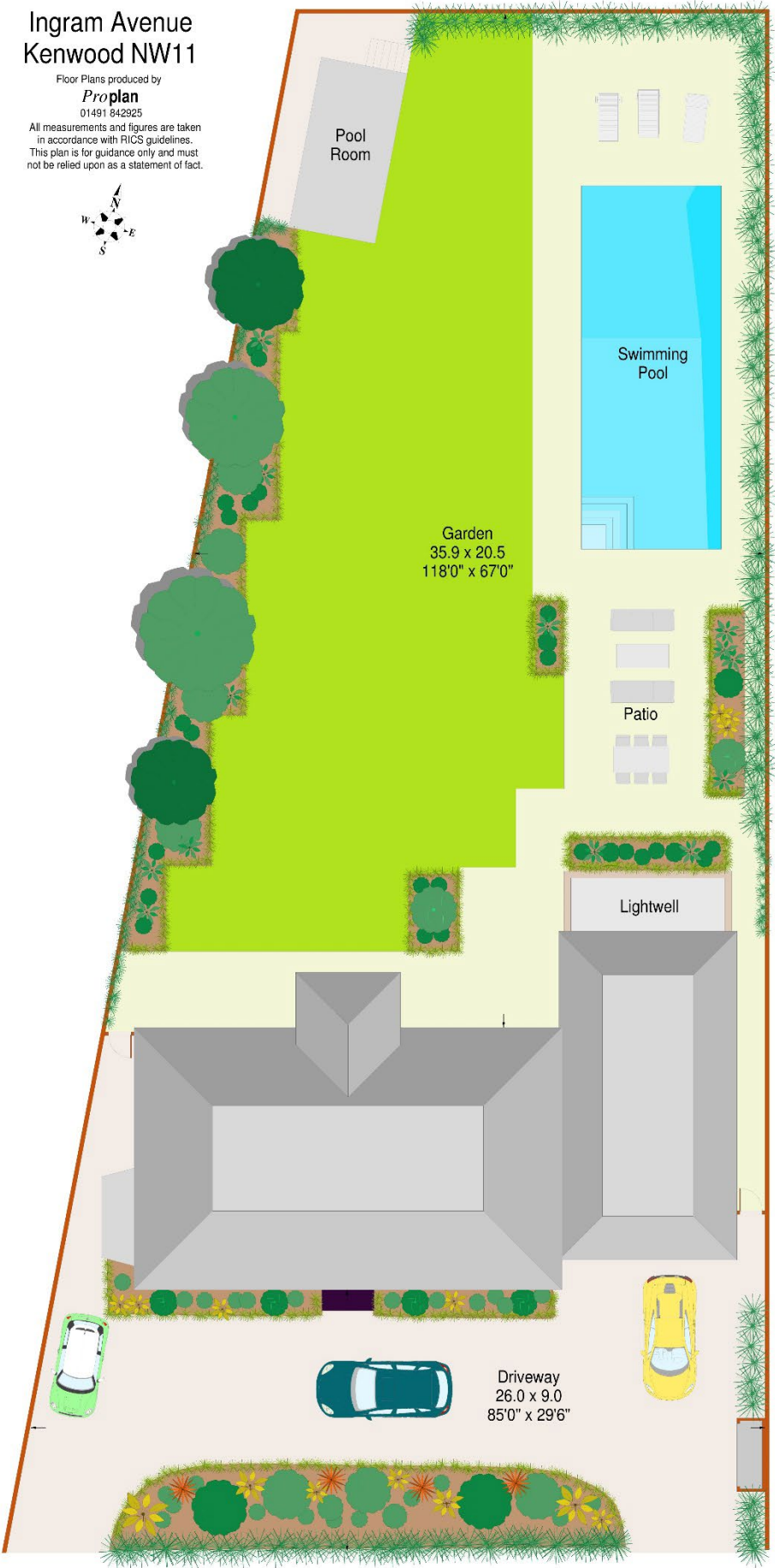
[astonchase.com](http://astonchase.com)



# ASTON CHASE

## Ingram Avenue Kenwood NW11

Floor Plans produced by  
**Proplan**  
01491 842825  
All measurements and figures are taken  
in accordance with RICS guidelines.  
This plan is for guidance only and must  
not be relied upon as a statement of fact.

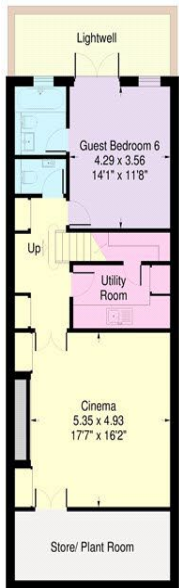




# ASTON CHASE

Ingram Avenue, Kenwood NW11

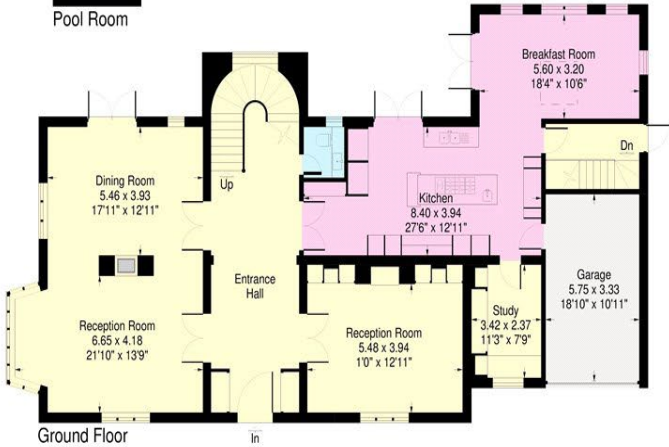
Approximate Gross Internal Area:  
House - 510.7 sq.mts. / 5497 sq.ft.  
(not including reduced height area,  
below 1.5m - denoted with dashed line)  
Reduced height area - 25.3 sq.mts. / 272 sq.ft.  
Total - 536.0 sq.mts. / 5769 sq.ft.  
Pool Room - 13.4 sq.mts. / 144 sq.ft.



Basement Floor

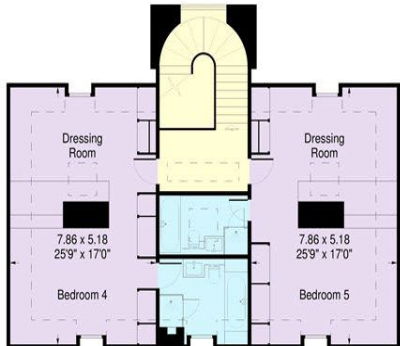


Pool Room

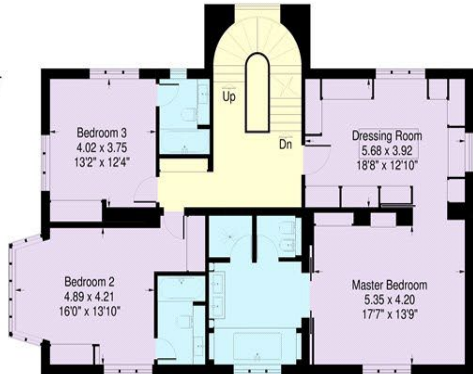


Ground Floor

APPROX. SCALE  
0 1 2 3 4 5 10Ft  
0 1 2 3M



Second Floor

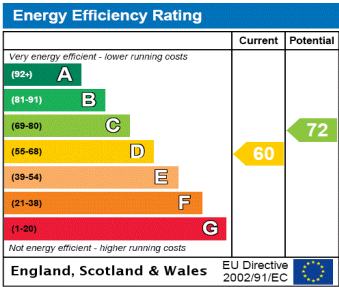


First Floor

Floor Plans produced by

**Proplan**  
01491 842925

All measurements and figures are taken  
in accordance with RICS guidelines.  
This plan is for guidance only and must  
not be relied upon as a statement of fact.



67-71 Park Road  
Regent's Park  
London, NW1 6XU  
020 7724 4724  
enquiries@astonchase.com

astonchase.com



**Important Notice**  
These particulars have been prepared in all good faith to give a fair overall view of the property and must not be relied upon as statements or representations of fact. Purchasers must satisfy themselves by inspection or otherwise regarding the items mentioned below and as to the content of these particulars. If any points are particularly relevant to your interest in the property ask for further information.