



ELGIN AVENUE

Maida Vale
London
W9

Guide Price
£900,000

Joint Sole Agent

Set within an elegant period building on Elgin Avenue, this beautifully refurbished one bedroom first floor apartment offers generous proportions, stylish interiors, and an excellent layout across 62.06sqm/ 668 sqft).

Upon entering, you're welcomed by a hallway leading to a grand and light-filled reception room with high ceilings. The living space flows seamlessly into a fully fitted contemporary kitchen with French doors open onto a private balcony.

The large bedroom is indulgent in both size and design, featuring extensive bespoke fitted wardrobes and a luxurious en-suite shower room. Additional to the guest W/C which adds further convenience.

ASTON CHASE

67-71 Park Road
Regent's Park
London, NW1 6XU
020 7724 4724
enquiries@astonchase.com

astonchase.com

ELGIN AVENUE

Maida Vale
London
W9

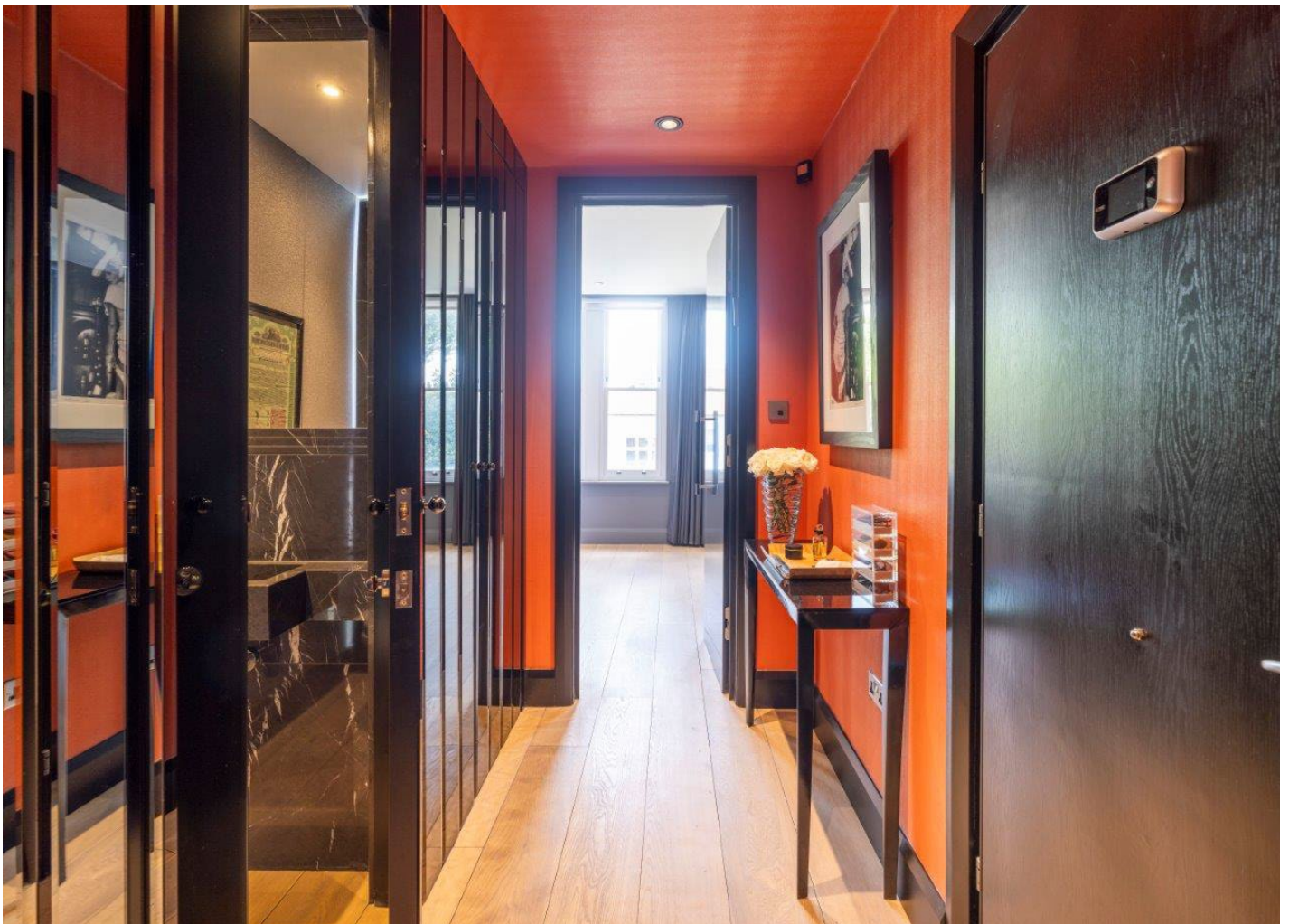
Guide Price
£900,000
Subject To Contract

Joint Sole Agent

Share of Freehold

Elgin Avenue is located in the heart of Maida Vale, a picturesque residential neighbourhood known for its tree-lined streets, period architecture, and village-like atmosphere. The apartment is just a short walk from the cafés, restaurants, and boutique shops along Lauderdale Parade and Clifton Road, as well as the green open spaces of Paddington Recreation Ground. Excellent transport links are close by, including Maida Vale and Warwick Avenue stations (Bakerloo Line), providing easy access to the West End and beyond. Numerous bus routes also serve the area, making commuting and travel effortless.

This is a truly special home that combines period charm with modern luxury in one of West London's most desirable locations.



ASTON CHASE

67-71 Park Road
Regent's Park
London, NW1 6XU
020 7724 4724
enquiries@astonchase.com

astonchase.com

ACCOMMODATION

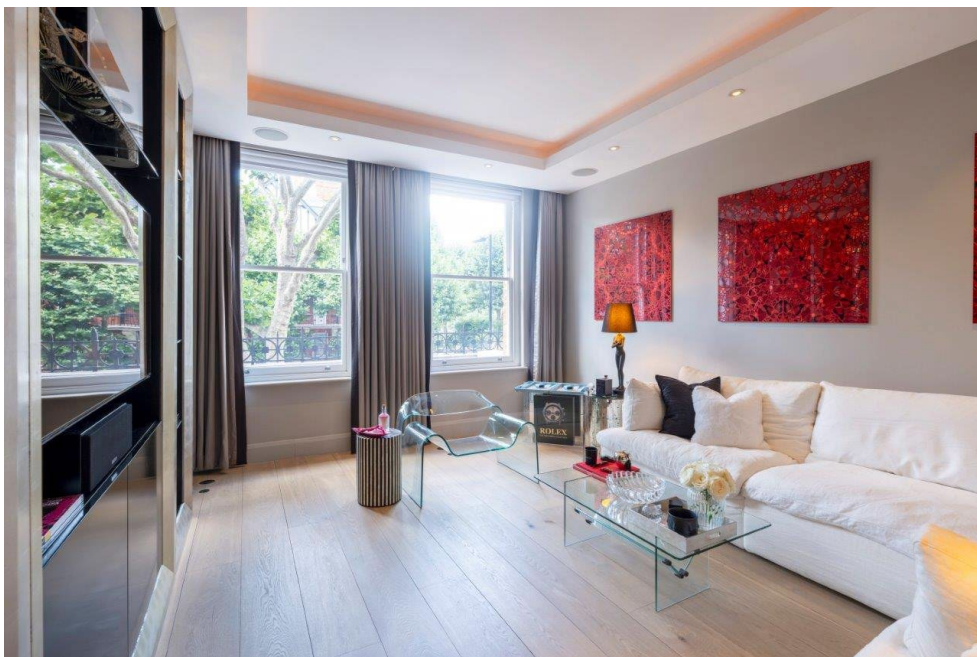
- Principal bedroom with ensuite bathroom
- Reception room
- Kitchen
- Guest cloakroom

AMENITIES

- Private balcony
- High ceilings
- Lutron lighting
- Air conditioning

COUNCIL TAX: D

EPC RATING: TBC



ASTON CHASE

67-71 Park Road
Regent's Park
London, NW1 6XU
020 7724 4724
enquiries@astonchase.com

astonchase.com



ASTON CHASE

67-71 Park Road
Regent's Park
London, NW1 6XU
020 7724 4724
enquiries@astonchase.com

astonchase.com

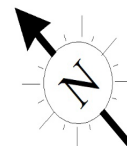


ASTON CHASE

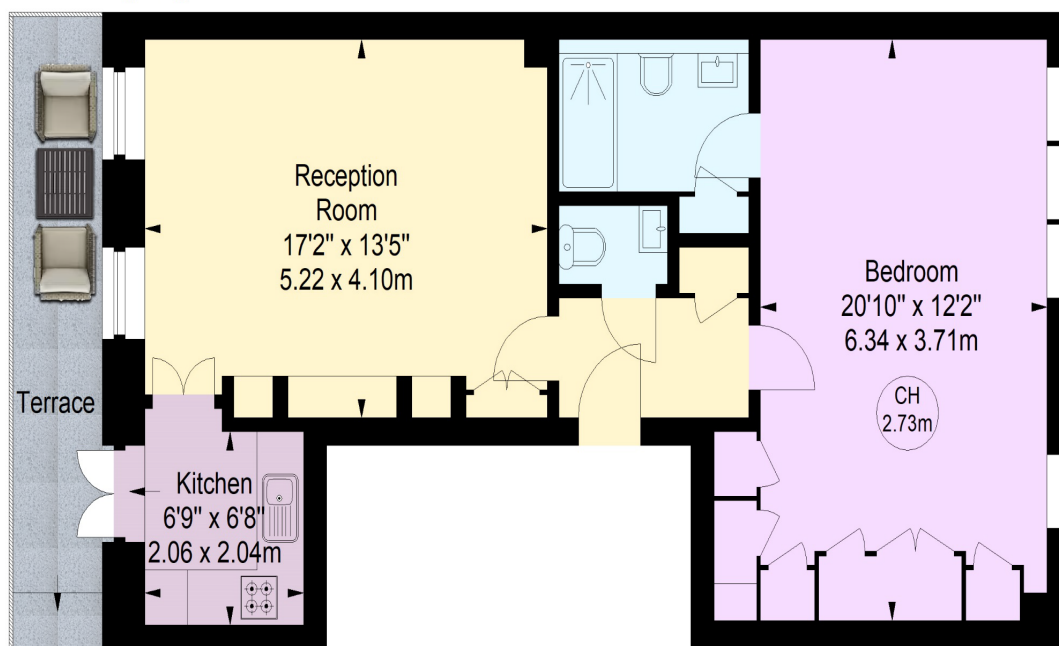
Elgin Avenue, W9

Approximate gross internal area

62.06 sq m / 668 sq ft



Key :
CH - Ceiling Height



First Floor



Illustration For Identification Purposes Only.
All measurements and areas are approximate, not to scale.
© Orange Tree Photography

67-71 Park Road
Regent's Park
London, NW1 6XU
020 7724 4724
enquiries@astonchase.com

astonchase.com



Important Notice

These particulars have been prepared in all good faith to give a fair overall view of the property and must not be relied upon as statements or representations of fact. Purchasers must satisfy themselves by inspection or otherwise regarding the items mentioned below and as to the content of these particulars. If any points are particularly relevant to your interest in the property ask for further information.