

ASTON CHASE



CHAPPELL LOFTS
Belmont Street, NW1

ASTON CHASE

CHAPPELL LOFTS

PROPERTY VIDEO AVAILABLE

An extremely spacious, newly built 4 double bedroom, 4 bathroom apartment with 3 large private decked terraces with stunning view of the London Skyline.

Set in the brand new Chappell Lofts development, the property further benefits from a swimming pool, spa pool gymnasium, and a spectacular Club Lounge providing residents with a private VIP entertainment venue for relaxation and entertaining. Facilities include a club lounge, bespoke cocktail bar/DJ booth, party/club sound/lighting system; 183 inch cinema screen, swimming pool, spa pool and gymnasium.

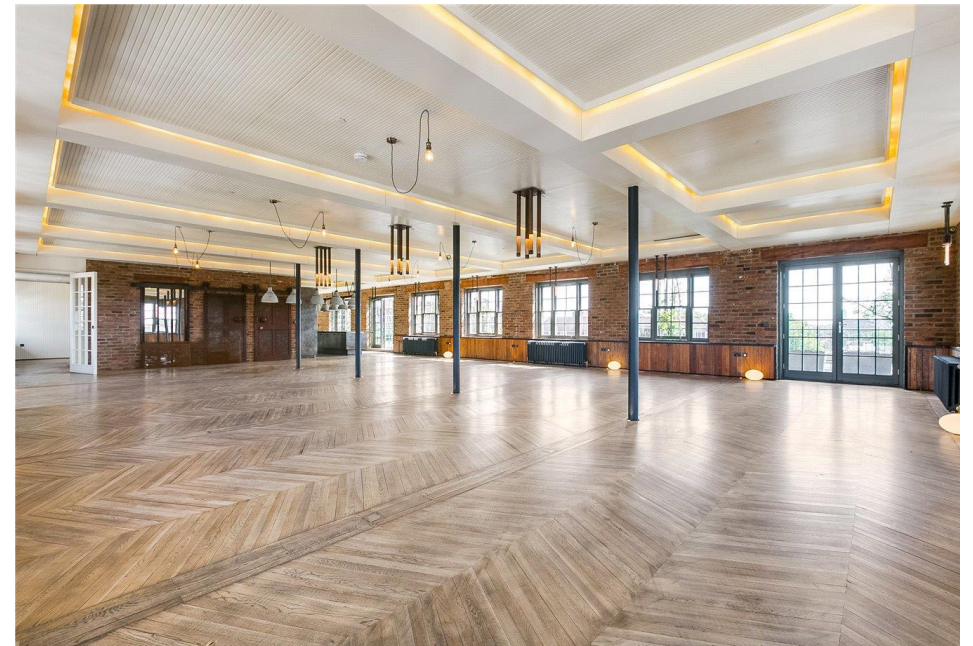
ACCOMMODATION

- Large Open Plan Kitchen/Reception Room,
- Four Double Bedrooms
- Four En-Suite Bathrooms
- Terrace

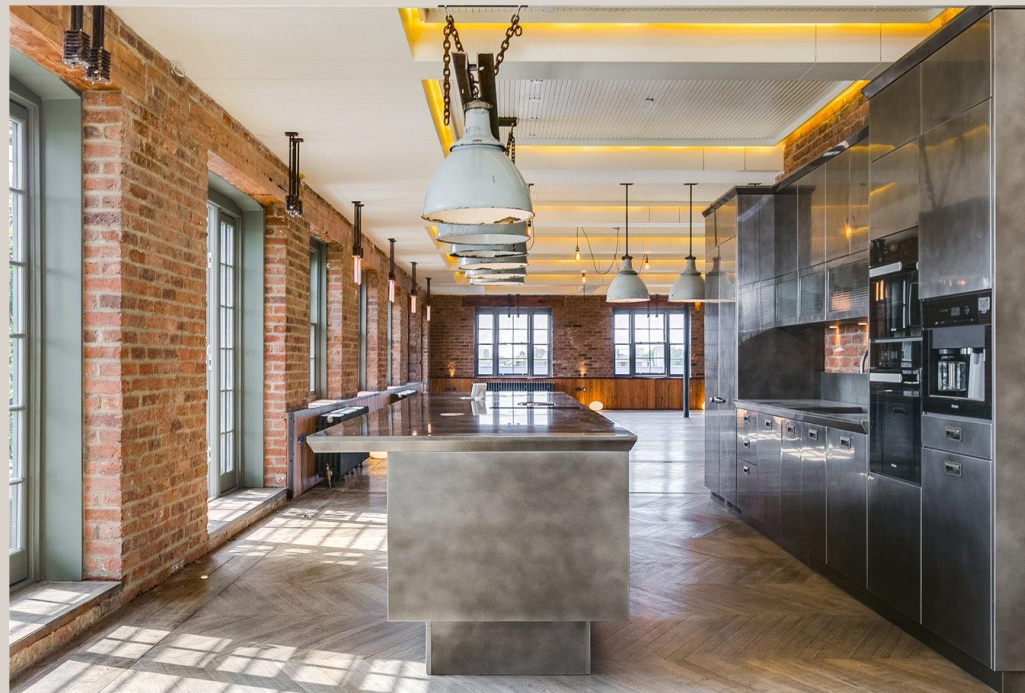
AMENITIES

Balcony

Leisure Facilities including Swimming Pool and Gym



ASTON CHASE




ASTON CHASE





The floor plan is not to scale and measurements and areas shown are approximate and therefore should be used for illustrative purposes only.
The plan has been prepared in accordance with the RICS code of Measuring Practice and whilst we have confidence in the information produced, it must not be relied on.
If there is any aspect of particular importance, you should carry out or commission your own inspection of the property.
Copyright of FeaturePRO.

ASTON CHASE

Energy Efficiency Rating		
	Current	Potential
Very energy efficient - lower running costs		
(92-100) A	85	85
(81-91) B		
(69-80) C		
(55-68) D		
(39-54) E		
(21-38) F	G	
(1-20) G		
Not energy efficient - higher running costs		
England, Scotland & Wales	EU Directive 2002/91/EC	

These particulars are a guide given in good faith and are believed to be correct at the time of printing. Aston Chase give no representation as to their accuracy and potential purchasers or tenants must satisfy themselves by inspection or otherwise as to their correctness. No employee of Aston Chase has authority to make or give any representation or warranty in relation to this property.