

# ASTON CHASE



ORDNANCE HILL  
London, NW8

ASKING PRICE  
£2,500 per week

# ASTON CHASE

## ORDNANCE HILL

A brand newly refurbished family home located within a short walk from St Johns Wood High Street. Situated over four floors, the property comprises a spacious reception room with wood flooring and access to a large rear garden, fully fitted kitchen, four bedrooms and two bathrooms, as well as a guest WC.

Ordnance Hill is conveniently located to all amenities of St John's Wood (Jubilee Line) High Street as well as the green open spaces of Regents Park and Primrose Hill.

## ACCOMMODATION

- Principal Bedroom with En-Suite Bathroom
- 3 Further Bedrooms
- 2 Further Bathrooms
- Double Reception Room
- Fully Fitted Kitchen
- Study

## AMENITIES

- Patio
- Garden





# ASTON CHASE

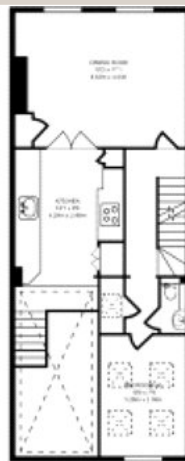




# ASTON CHASE



# ASTON CHASE



FIRST FLOOR

588 SQ FT/54.63 SQ M



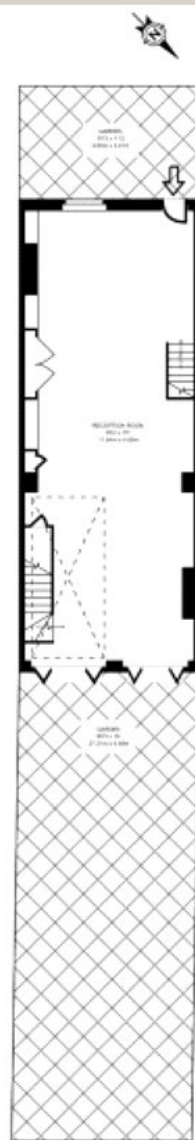
SECOND FLOOR

359 SQ FT/33.37 SQ M



THIRD FLOOR

308 SQ FT/28.59 SQ M



GROUND FLOOR

608 SQ FT/56.55 SQ M

## Energy Efficiency Rating

	Current	Potential
Very energy efficient - lower running costs		
(92+) <b>A</b>		
(81-91) <b>B</b>		
(69-80) <b>C</b>		80
(55-68) <b>D</b>	60	
(39-54) <b>E</b>		
(21-38) <b>F</b>		
(1-20) <b>G</b>		
Not energy efficient - higher running costs		
<b>England, Scotland &amp; Wales</b>	EU Directive 2002/91/EC	

67-71 Park Road  
Regent's Park  
London NW1 6XU

020 7724 4724

astonchase.com



## IMPORTANT NOTICE

These particulars are a guide given in good faith and are believed to be correct at the time of printing. Aston Chase give no representation as to their accuracy and potential purchasers or tenants must satisfy themselves by inspection or otherwise as to their correctness. No employee of Aston Chase has authority to make or give any representation or warranty in relation to this property.