

ASTON CHASE



WARWICK AVENUE
Maida Vale, London, W9

ASKING PRICE
£1,950 per week

ASTON CHASE

WARWICK AVENUE

A modern terraced townhouse in Little Venice, offering deceptively spacious accommodation 204 sq m / 2,200 sq ft set over four floors, with parking for 2 cars and a garden. This ideal family house offers flexibly arranged accommodation, either as four or five bedrooms and two to three reception rooms. There is also good size kitchen/breakfast room that opens onto the rear garden. The house is located close to Formosa Street's local shops. The nearest tube station is Warwick Avenue Bakerloo line(0.2 miles), Paddington mainline and underground stations are about 0.6 miles. Pet Friendly.

ACCOMMODATION

4/5 Bedrooms, 2 En-Suite Bathrooms, Family Bathroom, Open Plan Kitchen/Dining Room, 2 Reception Rooms, Parking for 2 cars

AMENITIES

Off street parking for 2 car
Private rear decked garden



ASTON CHASE



ASTON CHASE



ASTON CHASE

Warwick Avenue, W9
Gross internal area (approx)
187 sq.m (2013 sq.ft)
For Identification Only. Not To Scale.



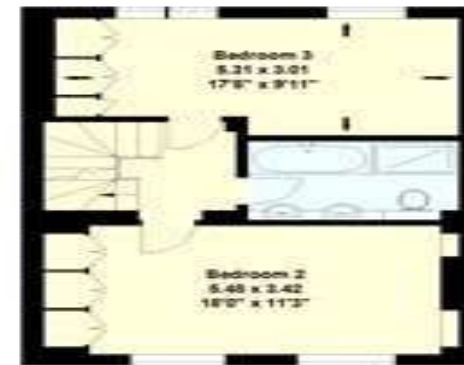
Ground Floor



Third Floor



First Floor



Second Floor



67-71 Park Road
Regent's Park
London NW1 6XU

020 7724 4724

astonchase.com



IMPORTANT NOTICE

These particulars are a guide given in good faith and are believed to be correct at the time of printing. Aston Chase give no representation as to their accuracy and potential purchasers or tenants must satisfy themselves by inspection or otherwise as to their correctness. No employee of Aston Chase has authority to make or give any representation or warranty in relation to this property.