

ASTON CHASE



GAINSBOROUGH GARDENS
Hampstead, London, NW3

ASKING PRICE
£6,500 per week

ASTON CHASE

GAINSBOROUGH GARDENS

A rare opportunity to rent this stunning, quintessentially Hampstead, period house set over four floors and offering over 5,613 sq ft in a quiet, almost secret, location with its own large private garden.

The property is discretely located in a residential enclave with direct access to the beautiful green spaces of Hampstead Heath and a short stroll to the amenities of Hampstead High Street and Hampstead tube. This amazing family home was used for the filming of the first scenes of the film the Railway Children and is located in a private road enclosing delightful gardens for the use of its residents.

The gorgeous family home comprises 6 bedrooms, four bathrooms, three guest WC's, two elegant reception rooms, a large fully-fitted kitchen, dining area, two studies and laundry room.

Transport Links include: Northern Line (Hampstead): approx 0.2 miles.

ACCOMMODATION

6 Bedrooms	Dining Room
2 En Suite Bathrooms	2 Studies
2 Bathrooms	Kitchen
3 Guest WCs	Terrace
2 Reception Rooms	Large Garden

AMENITIES

Hampstead's only garden square
Large communal gardens
Residents parking for 2-3 cars
Private road



ASTON CHASE



ASTON CHASE



ASTON CHASE

Gainsborough Gardens, NW3

Approximate gross internal area

521.45 sq m / 5,613 sq ft

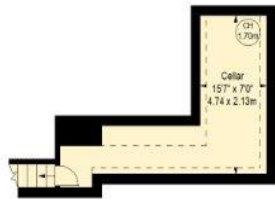
(Including Eaves Storage & Restricted Height Under 1.5m)

Eaves Storage

5.67 sq m / 61 sq ft

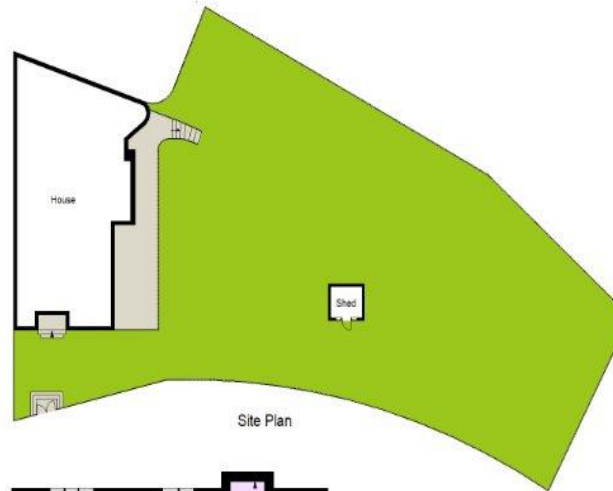
Restricted Height Under 1.5m

8.73 sq m / 94 sq ft

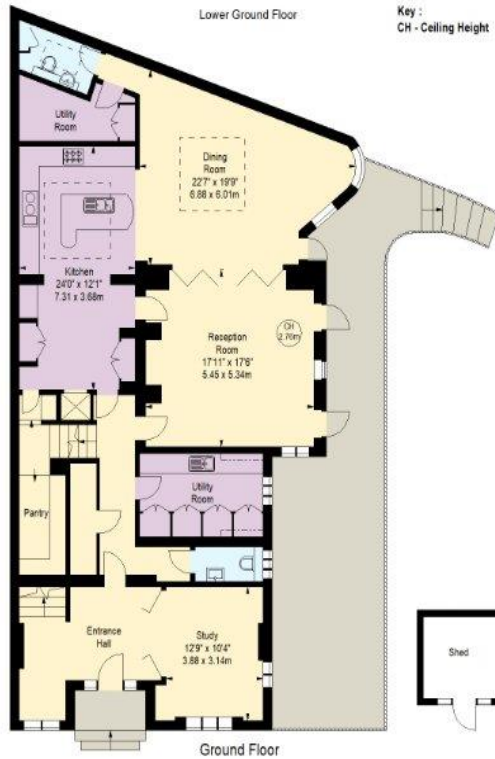


Lower Ground Floor

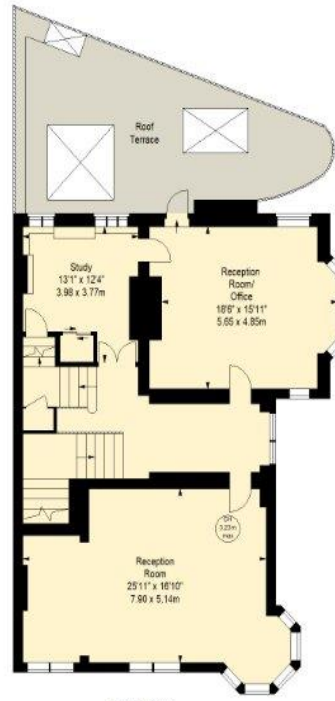
Key :
CH - Ceiling Height



Site Plan



Ground Floor



First Floor



Second Floor



Third Floor

Energy Efficiency Rating		
	Current	Potential
Very energy efficient - lower running costs		
(92+) A		
(81-91) B		
(69-80) C		
(55-68) D		
(39-54) E		
(21-38) F		
(1-20) G		
Not energy efficient - higher running costs		
England, Scotland & Wales	EU Directive 2002/91/EC	

62 (Current) 76 (Potential)

67-71 Park Road
Regent's Park
London NW1 6XU

020 7724 4724

astonchase.com



IMPORTANT NOTICE

These particulars are a guide given in good faith and are believed to be correct at the time of printing. Aston Chase give no representation as to their accuracy and potential purchasers or tenants must satisfy themselves by inspection or otherwise as to their correctness. No employee of Aston Chase has authority to make or give any representation or warranty in relation to this property.