



Winnington  
Road N2

WELCOME TO WINNINGTON ROAD

# KENWOOD

## N2

A magnificent bespoke residence set behind security gates in the area's most coveted location, backing directly onto Hampstead Golf Course. This outstanding home features exquisite contemporary interiors throughout. Arranged over four floors, the property has 16,749 sq. ft. (1,559 sq. m.) of interior designed accommodation comprising a breath-taking grand entrance atrium, luxurious and spacious accommodation for entertaining, and 6 bedroom suites including a principal bedroom with an oversized bathroom and dressing room.

The home also features state of the art gym and spa facilities with an incredible indoor swimming pool, sauna, steam and pool lounge area. There is also a games room, media room and a beautiful landscaped private rear garden. The home enjoys uninterrupted and sweeping views over Hampstead golf course.

The carriage driveway provides parking for several vehicles and leads to a secure underground garage with space for up to 6 cars.

Homes of this calibre and quality are rarely available for sale.













# FLOORPLAN

Approximate Gross Internal Area  
1,559 sq m / 16,749 sq ft

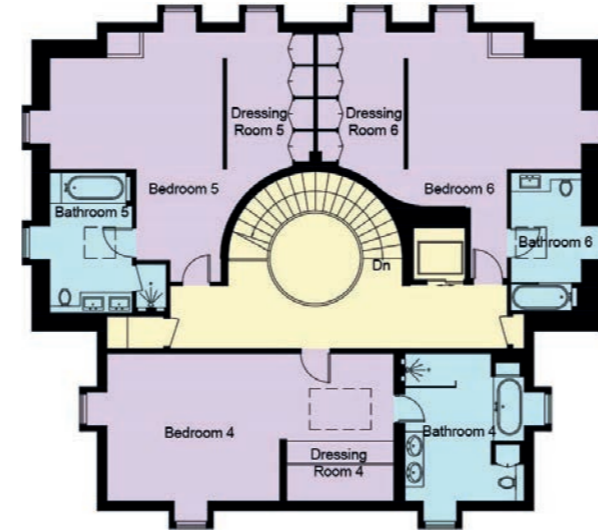
Basement



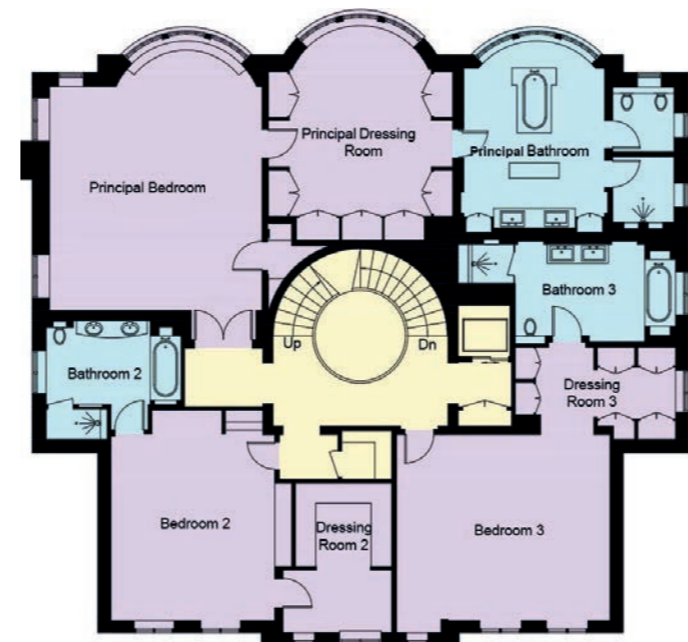
Ground Floor



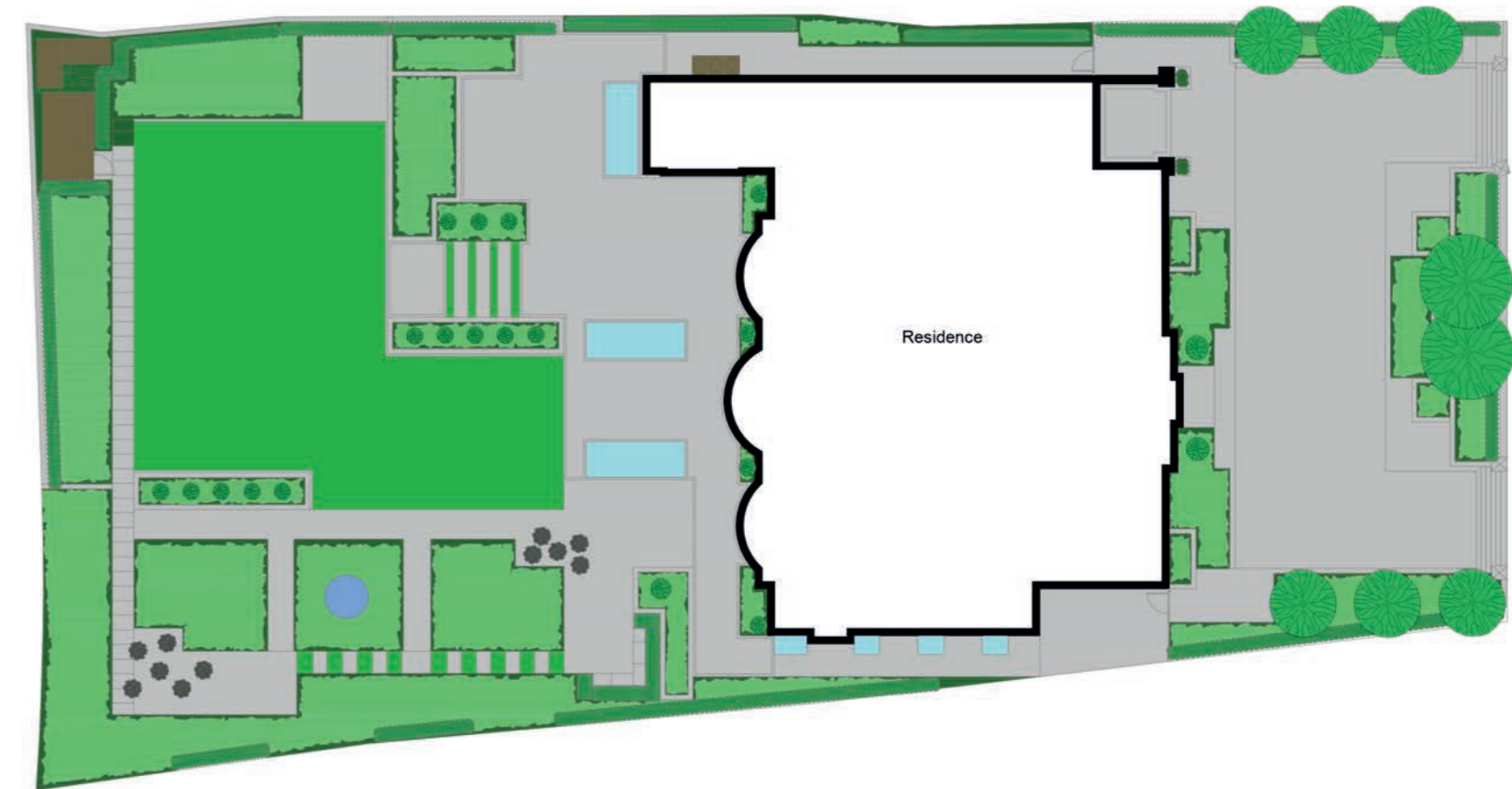
Second Floor



First Floor



Site Plan



(Site Plan Not To Scale)

