



## **PARK ST. JAMES**

St. James's Terrace  
St John's Wood  
London  
NW8

Asking Price  
£2,195,000

Sole Agent

An impressive three double bedroom apartment (1981 sq ft / 184 sq m) situated on the 1st Floor of this purpose-built block on Price Albert Road.

The apartment comprises large and bright reception/dining area with two private terraces looking towards Regent's Park, separate fully fitted kitchen, three double bedrooms each with their own en-suite, one bedroom also benefits from patio access, a utility room and guest cloakroom.

# ASTON CHASE

67-71 Park Road  
Regent's Park  
London, NW1 6XU  
020 7724 4724  
[enquiries@astonchase.com](mailto:enquiries@astonchase.com)

[astonchase.com](http://astonchase.com)

## PARK ST. JAMES

St. James's Terrace  
St John's Wood  
London  
NW8

Asking Price  
£2,195,000  
Subject To Contract

Sole Agent

Leasehold 958 Years  
+ Share of Freehold

Further benefits include concierge and one designated underground parking space.

Park St James is superbly located on Prince Albert Road, opposite the open spaces of The Regent's Park & within close proximity to all the amenities of both Primrose Hill & St John's Wood High Street, including St John's Wood Underground station (Jubilee line).





# ASTON CHASE

67-71 Park Road  
Regent's Park  
London, NW1 6XU  
020 7724 4724  
[enquiries@astonchase.com](mailto:enquiries@astonchase.com)

[astonchase.com](http://astonchase.com)

## ACCOMMODATION

- 3 Bedrooms
- 2 En Suite Bathrooms
- En Suite Shower Room
- Guest WC
- Reception Room
- Kitchen
- Utility Room

## AMENITIES

- 2 Balconies
- Patio
- Designated Underground Parking Space
- Concierge

COUNCIL TAX: H

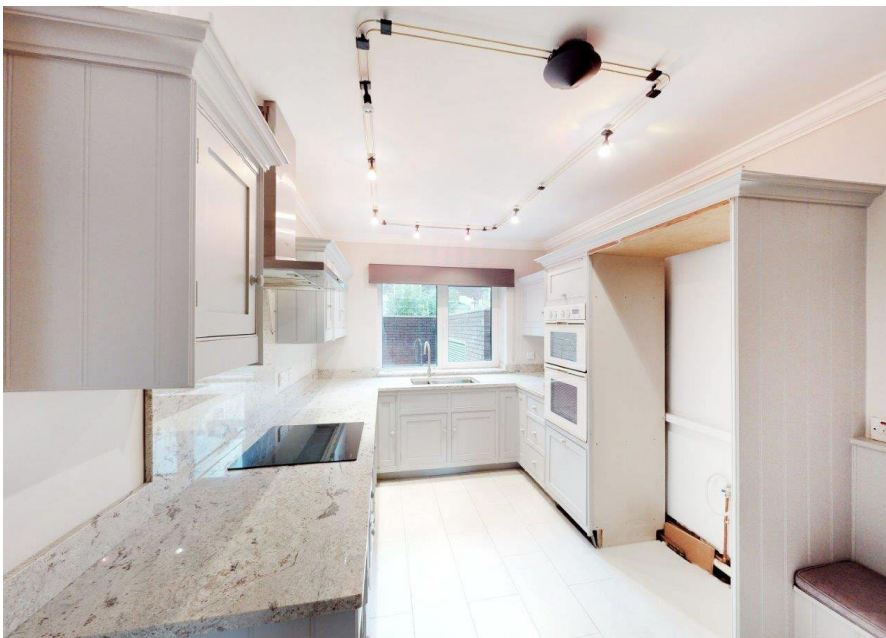
EPC RATING: 83



# ASTON CHASE

67-71 Park Road  
Regent's Park  
London, NW1 6XU  
020 7724 4724  
[enquiries@astonchase.com](mailto:enquiries@astonchase.com)

[astonchase.com](http://astonchase.com)



# ASTON CHASE

67-71 Park Road  
Regent's Park  
London, NW1 6XU  
020 7724 4724  
[enquiries@astonchase.com](mailto:enquiries@astonchase.com)

[astonchase.com](http://astonchase.com)

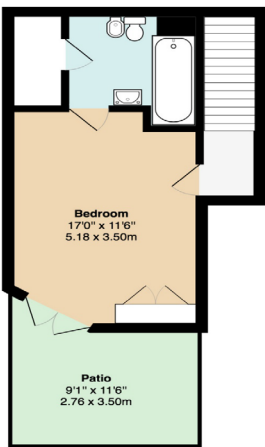




# ASTON CHASE



1st floor

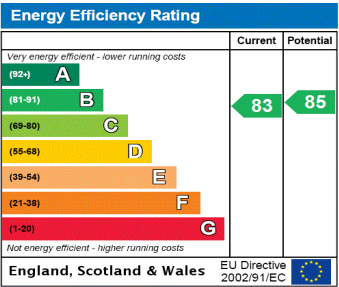


Raised Ground floor

Park St James, St James's Terrace, NW8

Total Area: 1981 ft² ... 184.0 m² (excluding balcony, patio)

Floor plans are for identification guideline purposes only, not to scale.  
Compliant with the RICS code of measuring practice



67-71 Park Road  
Regent's Park  
London, NW1 6XU  
020 7724 4724  
enquiries@astonchase.com

astonchase.com



## Important Notice

These particulars have been prepared in all good faith to give a fair overall view of the property and must not be relied upon as statements or representations of fact. Purchasers must satisfy themselves by inspection or otherwise regarding the items mentioned below and as to the content of these particulars. If any points are particularly relevant to your interest in the property ask for further information.