
THE PENTHOUSE

THE GLASS BUILDING

226 ARLINGTON ROAD
CAMDEN • NW1



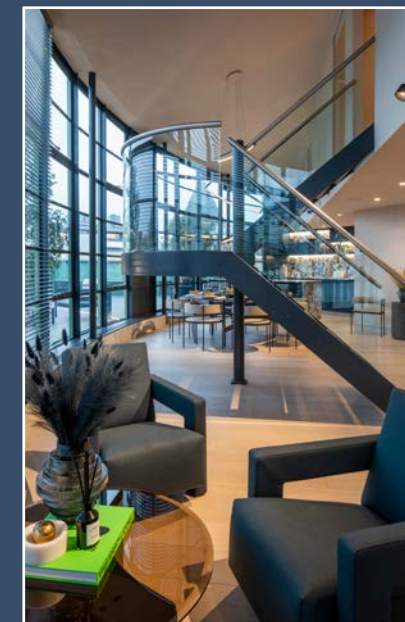


A NEWLY REFURBISHED
THREE BEDROOM
DUPLEX PENTHOUSE
APARTMENT ARRANGED
OVER TWO FLOORS,

benefiting from a large private roof terrace,
secure gated parking for one vehicle and
a day time porter service.



The apartment has been finished to a high specification featuring a Rako automation system, Miele & Gaggenau appliances in the kitchen, underfloor heating throughout the apartment in addition to a full air-conditioning system.





The Glass Building, designed by Piers Gough of renowned architectural practice CZWG, was the first purpose built new loft building in Camden and at the time of its construction, a ground breaking building. Camden Town Underground Station (Northern Line) is within close proximity as are the open spaces of both Regent's Park & Primrose Hill.





ACCOMMODATION

- Three Bedrooms
- Three Bathrooms
- Reception Room
- Dining Room
- Open Plan Kitchen
- Utility Room
- Guest Cloakroom

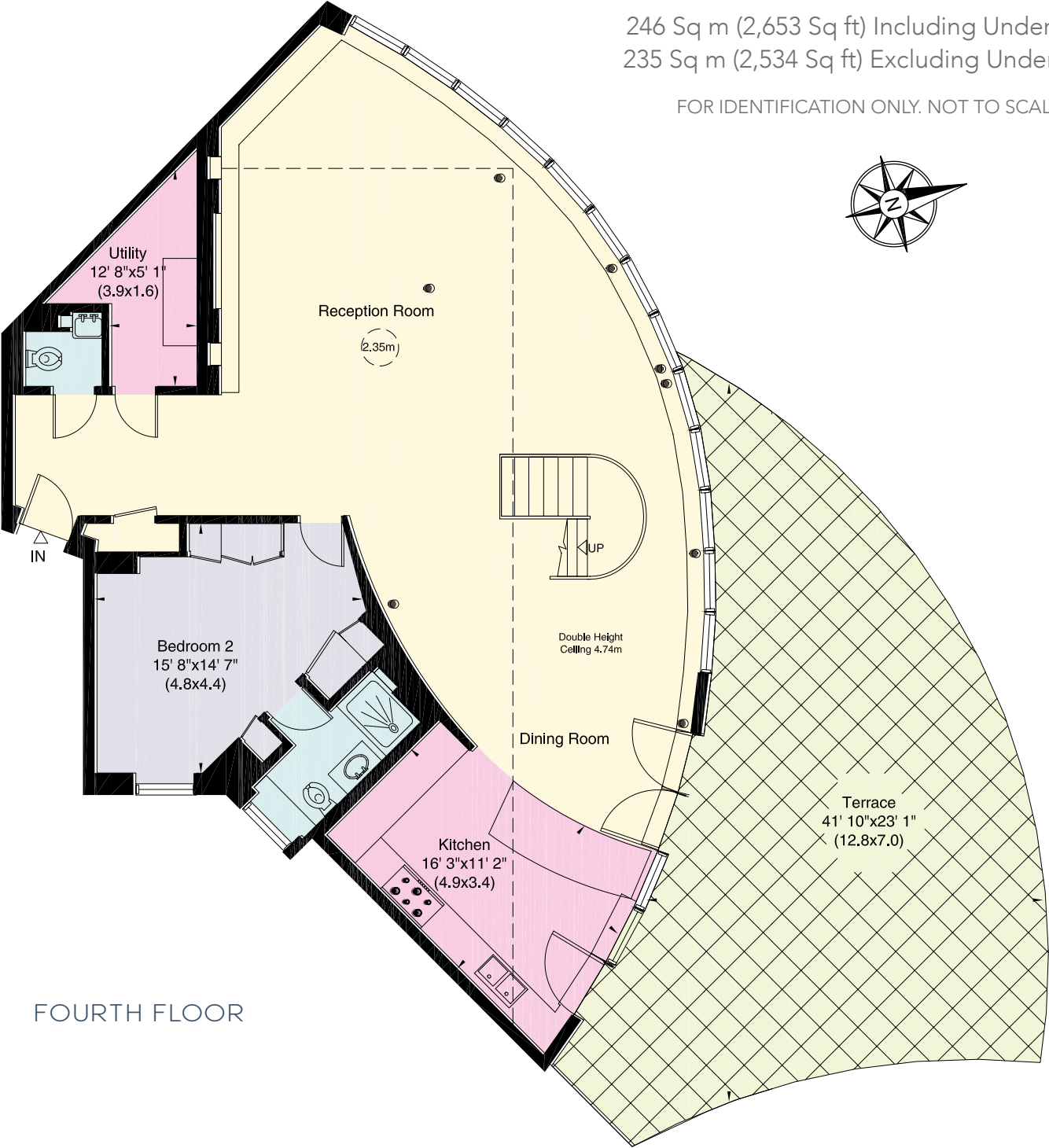
AMENITIES

- Private Terrace
- Porterage
- Secure Gated Parking
- Underfloor Heating
- Air-Conditioning
- Lift

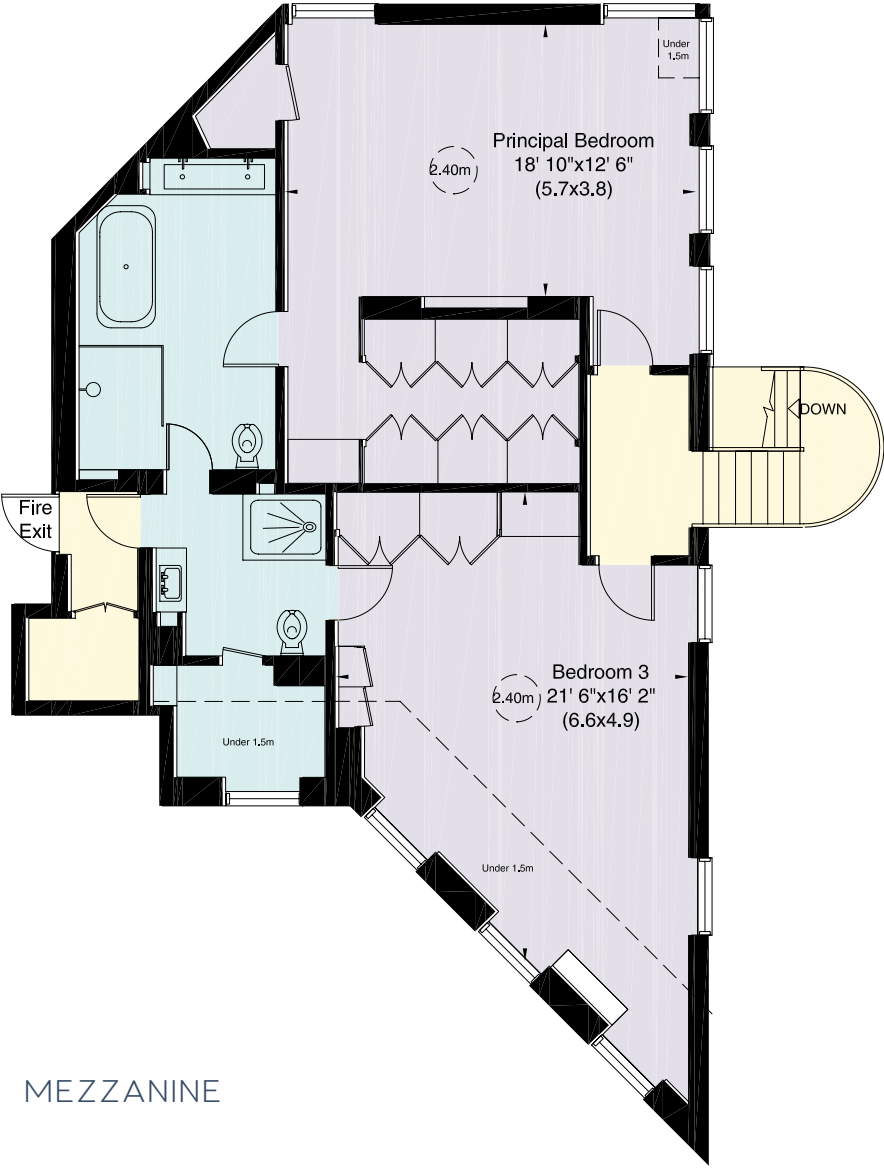
GROSS INTERNAL AREA (APPROX.)

246 Sq m (2,653 Sq ft) Including Under 1.5m
235 Sq m (2,534 Sq ft) Excluding Under 1.5m

FOR IDENTIFICATION ONLY. NOT TO SCALE



FOURTH FLOOR



MEZZANINE

Not to scale, for guidance only and must not be relied upon as a statement of fact. All measurements and areas are approximate only (and have been prepared in accordance with the current edition of the RICS Code of Measuring Practice).

EPC RATING: TBC

COUNCIL TAX: CAMDEN (BAND H)

SHARE OF FREEHOLD

ASKING PRICE: £2,795,000

SUBJECT TO CONTRACT

JOINT SOLE AGENTS

ASTON CHASE

enquiries@astonchase.com
+44 (0) 20 7724 4724

IMPORTANT NOTICE

These particulars have been prepared in all good faith to give a fair overall view of the property and must not be relied upon as statements or representations of fact. Purchasers must satisfy themselves by inspection or otherwise regarding the items mentioned below and as to the content of these particulars. If any points are particularly relevant to your interest in the property ask for further information.