

ASTON CHASE



BRUNSWICK PLACE

Regents Park, London, NW1

ASKING PRICE

£3,350 per week

ASTON CHASE

BRUNSWICK PLACE

A beautiful 5 bedroomed double fronted Nash house situated in a quiet turning adjacent to Regents Park and within walking distance of the West End's extensive shopping and entertainment amenities. This Grade II listed period house measures approximately 3,000 sq feet and is arranged over three floors. Benefits include an integral garage as well as three reception rooms and use of Park Square's private residents' gardens. Brunswick Place is within 300 metres of Marylebone High Street with Oxford Street just over half a mile away. The nearest tube stations are Regent Park (200m), Great Portland Street (0.3 miles) and Baker Street (0.4 miles).

ACCOMMODATION

5 Bedrooms (3 En-Suite), Family Bathroom, 2 Reception Rooms, Study, Media Room, Fully Fitted Kitchen

AMENITIES

Garage,
Access to Residents' Garden



ASTON CHASE

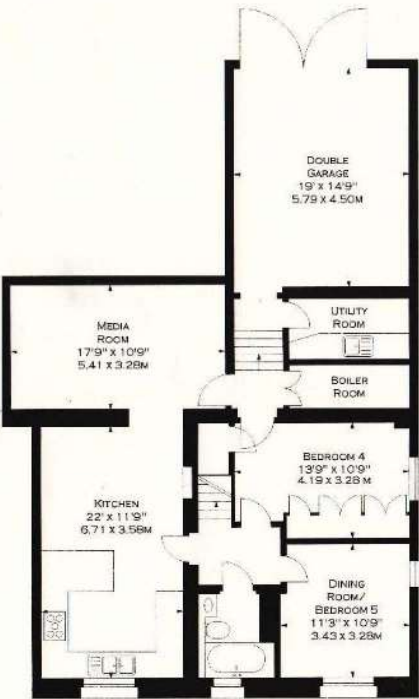


ASTON CHASE

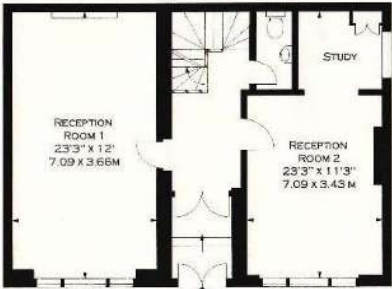


ASTON CHASE

5 & 6 BRUNSWICK PLACE, NW1
APPROX. GROSS INTERNAL AREA *
2986 FT² - 277.40 M²



LOWER GROUND FLOOR



GROUND FLOOR



FIRST FLOOR

ILLUSTRATION FOR IDENTIFICATION PURPOSES ONLY. NOT TO SCALE
* As Defined by RICS - CODE OF MEASURING PRACTICE
© BKR FLOORPLANS 2005
TEL 020 7787 5544

Energy Efficiency Rating		
	Current	Potential
Very energy efficient - lower running costs		
(92-100) A		
(81-91) B		
(69-80) C		
(55-68) D		
(39-54) E	56	73
(21-38) F		
(1-20) G		
Not energy efficient - higher running costs		
England, Scotland & Wales	EU Directive 2002/91/EC	

67-71 Park Road
Regent's Park
London NW1 6XU

020 7724 4724
astonchase.com

IMPORTANT NOTICE

These particulars are a guide given in good faith and are believed to be correct at the time of printing. Aston Chase give no representation as to their accuracy and potential purchasers or tenants must satisfy themselves by inspection or otherwise as to their correctness. No employee of Aston Chase has authority to make or give any representation or warranty in relation to this property.