



GOLDHURST TERRACE

South Hampstead
London
NW6

Guide Price
£4,000,000

Sole Agent

An exciting opportunity to purchase a newly renovated 5 Bedroom Victorian Family Home (3,610 sq ft/335 sq m) within the ever popular South Hampstead Conservation Area. Arranged over just three floors and offering exceptionally well balanced and light accommodation the property sits behind high secure gates and benefits from one of the largest gardens on the road.

ASTON CHASE

67-71 Park Road
Regent's Park
London, NW1 6XU
020 7724 4724
enquiries@astonchase.com

astonchase.com

GOLDHURST TERRACE

South Hampstead
London
NW6

Guide Price
£4,000,000
Subject To Contract

Sole Agent

Freehold

Goldhurst Terrace is ideally located for the O2 centre multiscreen cinema, Waitrose, local shops, restaurants and schools as well as superb transport links (Jubilee, metropolitan and Overground Rail).



ASTON CHASE

67-71 Park Road
Regent's Park
London, NW1 6XU
020 7724 4724
enquiries@astonchase.com

ACCOMMODATION

- Kitchen with Breakfast Room
- Living Room
- Dining Room
- Study
- Family Room
- Principal Bedroom with En-Suite Bathroom and Dressing Room
- Two Family Bathrooms
- 4 Further Bedrooms (One with En-Suite Bathroom)
- Utility Room
- Guest Cloakroom

AMENITIES

- 120ft South Facing Garden
- Gated Off Street Parking for 2/3 cars
- Underfloor Heating
- Integrated Audio System
- Visual Intercom

COUNCIL TAX: H

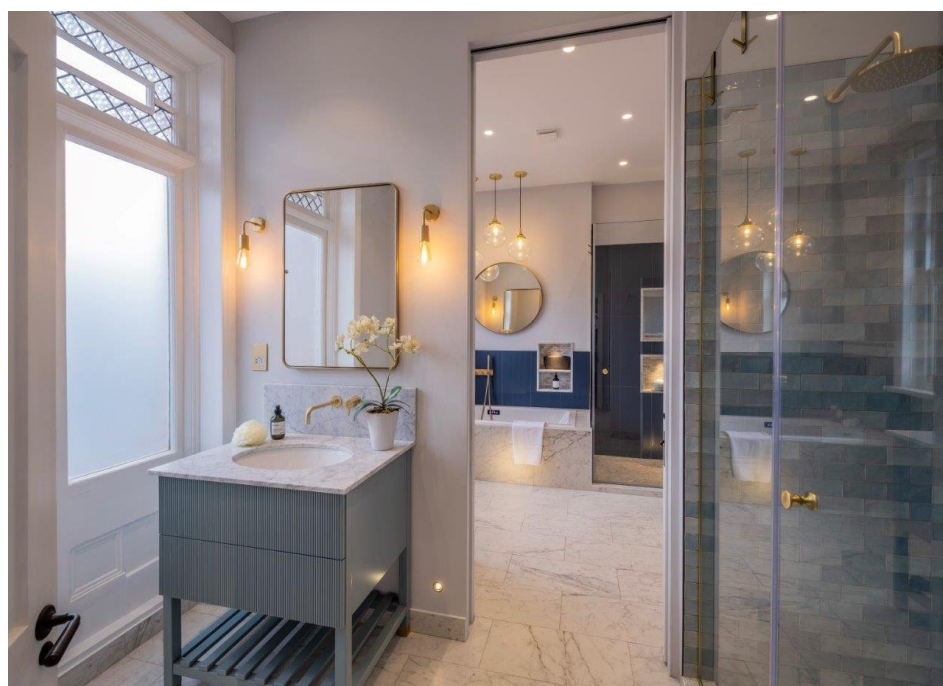
EPC RATING: E



ASTON CHASE

67-71 Park Road
Regent's Park
London, NW1 6XU
020 7724 4724
enquiries@astonchase.com

astonchase.com



ASTON CHASE

67-71 Park Road
Regent's Park
London, NW1 6XU
020 7724 4724
enquiries@astonchase.com

astonchase.com



ASTON CHASE

67-71 Park Road
Regent's Park
London, NW1 6XU
020 7724 4724
enquiries@astonchase.com

astonchase.com



ASTON CHASE



The floor plan is not to scale and measurements and areas shown are approximate and therefore should be used for illustrative purposes only. The plan has been prepared in accordance with the RICS code of Measuring Practice and whilst we have confidence in the information produced, it must not be relied on. If there is any aspect of particular importance, you should carry out or commission your own inspection of the property.
© Orange Tree Photography

