

ASTON CHASE



GREVILLE ROAD
St John's Wood, London, NW6

ASKING PRICE
£2,307.69 per week

ASTON CHASE

GREVILLE ROAD

An opportunity to rent this gated, elegant and modernised five bedroom, four bathroom family home (250.18 sq m / 2693 sq ft), featuring well-proportioned bright and spacious rooms with high ceilings and arranged over four floors only. The property also benefits from both front and rear gardens and a large roof terrace leading off the raised ground floor.

Greville Road is well positioned within walking distance of the American School in London (ASL), local shopping amenities, restaurants and the Underground Station of both Maida Vale and St John's Wood plus the open space of Paddington recreation ground.

ACCOMMODATION

Four Bedrooms (2 Ensuite)

Two Receptions

Utility Room

Study

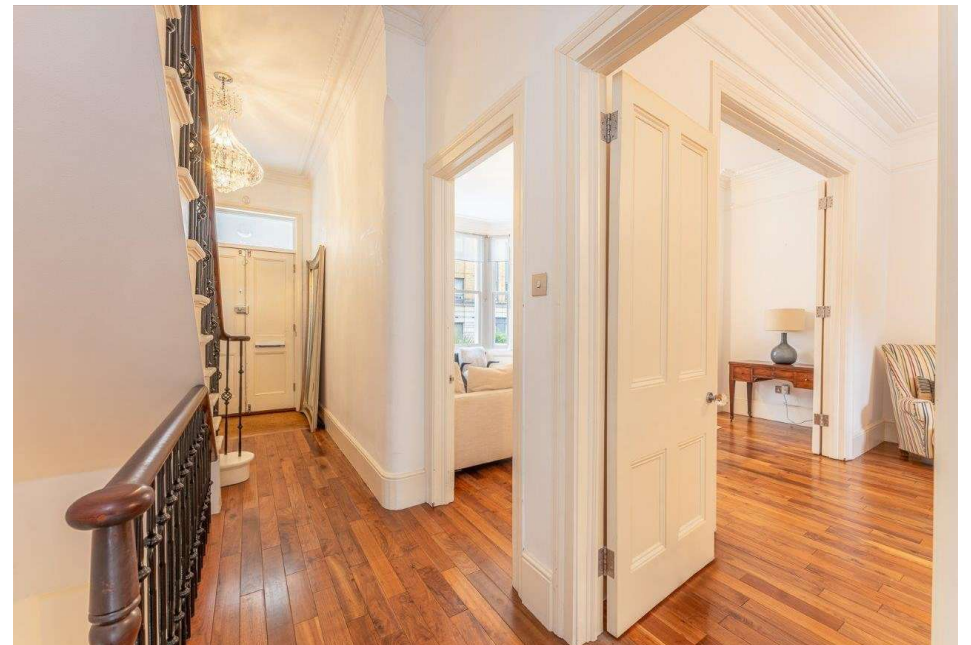
Garden Room

AMENITIES

Front and Rear Gardens

Balcony

Large Roof Terrace



ASTON CHASE



ASTON CHASE



ASTON CHASE

Greville Road, NW6

Approximate gross internal area

2,693 sq ft / 250.18 sq m

(Including Store & Restricted Height Under 1.5m
& Excluding Storage)

Store & Restricted Height Under 1.5m

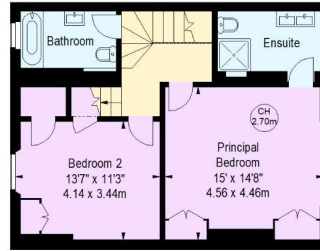
25 sq ft / 2.32 sq m

Storage

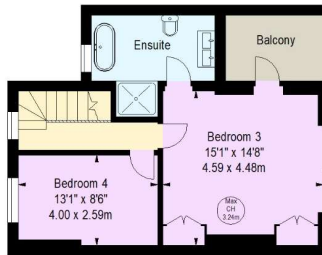
13 sq ft / 1.21 sq m



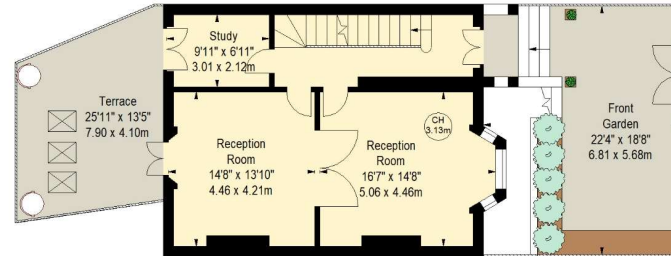
Key:
CH - Ceiling Height



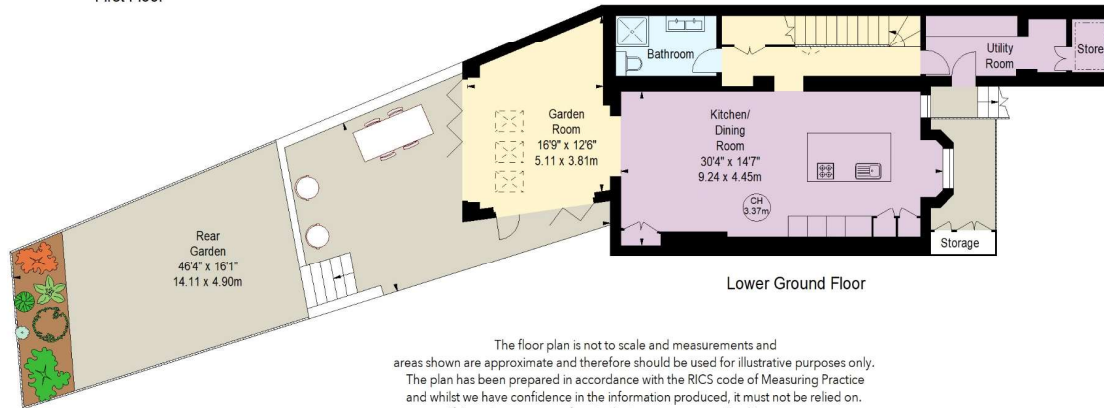
Second Floor



First Floor



Ground Floor



Lower Ground Floor

The floor plan is not to scale and measurements and areas shown are approximate and therefore should be used for illustrative purposes only. The plan has been prepared in accordance with the RICS code of Measuring Practice and whilst we have confidence in the information produced, it must not be relied on. If there is any aspect of particular importance, you should carry out or commission your own inspection of the property.
© Orange Tree Photography

Energy Efficiency Rating		
	Current	Potential
Very energy efficient - lower running costs		
(92-)		
A		
(81-91)		
B		
(69-80)		
C		
(56-68)		
D		
(39-54)		
E		
(21-38)		
F		
(1-20)		
G		
Not energy efficient - higher running costs		
England, Scotland & Wales		
		EU Directive 2002/91/EC

72

82

67-71 Park Road
Regent's Park
London NW1 6XU

020 7724 4724

astonchase.com



IMPORTANT NOTICE

These particulars are a guide given in good faith and are believed to be correct at the time of printing. Aston Chase give no representation as to their accuracy and potential purchasers or tenants must satisfy themselves by inspection or otherwise as to their correctness. No employee of Aston Chase has authority to make or give any representation or warranty in relation to this property.