



ST JOHN'S WOOD PARK

St John's Wood
London
NW8

Asking Price
£2,500,000

Joint Sole Agent

This three bedroom duplex apartment (104.2 sq m/1121.6 sq ft) is set on the first floor of this landmark building.

Designed by international award-winning architects Maccreanor Lavington the development comprises nine luxury apartments, including two penthouses.

ASTON CHASE

67-71 Park Road
Regent's Park
London, NW1 6XU
020 7724 4724
enquiries@astonchase.com

astonchase.com

ST JOHN'S WOOD PARK

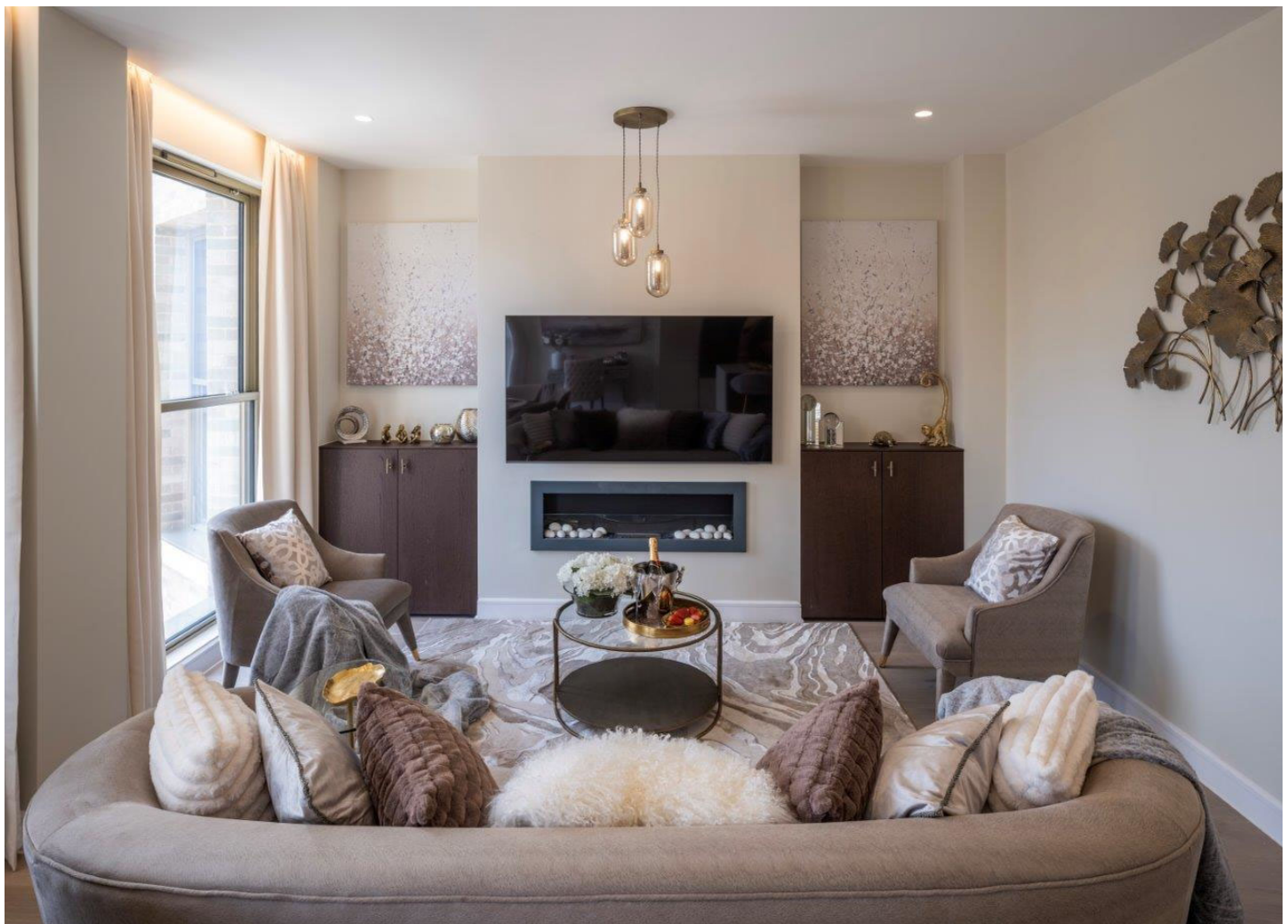
St John's Wood
London
NW8

Situated in the east side of St John's Wood, the apartments offer superbly designed and luxurious living spaces, full of natural light and finished to the highest of standards.

Asking Price
£2,500,000
Subject To Contract

Joint Sole Agent

Leasehold



ASTON CHASE

67-71 Park Road
Regent's Park
London, NW1 6XU
020 7724 4724
enquiries@astonchase.com

astonchase.com

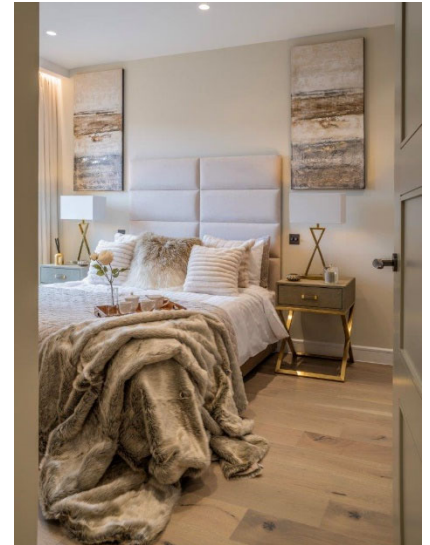
ACCOMMODATION

- Principal Bedroom with En-Suite Bathroom
- Second Bedroom
- Bathroom
- Open Plan Kitchen and Living Area

AMENITIES

- Lift
- Day Porter
- Parking by Separate Negotiation

COUNCIL TAX: G



ASTON CHASE

67-71 Park Road
Regent's Park
London, NW1 6XU
020 7724 4724
enquiries@astonchase.com

astonchase.com

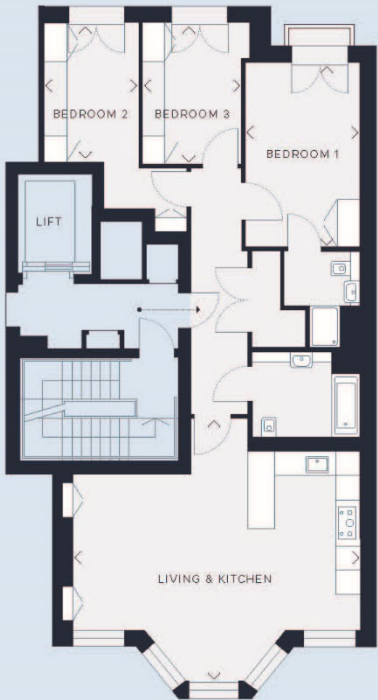


ASTON CHASE

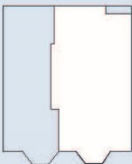
FLOORPLANS

APARTMENT THREE

THREE BEDROOM APARTMENT
NSA 104.2 SQ M / 1121.6 SQ FT



APARTMENT
LOCATOR



1	BEDROOM 1	4.8 x 3.0 M	15'7" x 9'8"
2	BEDROOM 2	3.6 x 2.5 M	11'8" x 8'2"
3	BEDROOM 3	3.7 x 2.5 M	12'1" x 8'2"
4	LIVING & KITCHEN	7.6 x 7.8 M	24'9" x 25'6"

