



PRIMROSE HILL ROAD

Belsize Park
London
NW3

Guide Price
£1,200,000

Joint Sole Agent

An impressive raised ground floor two-bedroom apartment (903 sq.ft / 83.89 sq.m) set within a beautifully presented Victorian property.

ASTON CHASE

67-71 Park Road
Regent's Park
London, NW1 6XU
020 7724 4724
enquiries@astonchase.com

astonchase.com

PRIMROSE HILL ROAD

Belsize Park
London
NW3

Guide Price
£1,200,000
Subject To Contract

Joint Sole Agent

Share of Freehold

The apartment features high ceilings and a view of the communal gardens from the living room and separate kitchen. Located between the sought-after neighbourhoods of Belsize Park and Primrose Hill, this apartment provides easy access to thriving cafes, restaurants, and independent shops. With Primrose Hill Park just a stone's throw away, the nearby Swiss Cottage (Jubilee Line) ensures quick connections to Oxford Street, Bond Street, Mayfair, The City, and Canary Wharf.



ASTON CHASE

67-71 Park Road
Regent's Park
London, NW1 6XU
020 7724 4724
enquiries@astonchase.com

astonchase.com

ACCOMMODATION

- Impressive raised ground floor two bedroom apartment
- Large reception with original period features
- Wet room
- Kitchen with beautiful views over garden

AMENITIES

- High ceilings
- Private entrance
- Direct access to communal garden

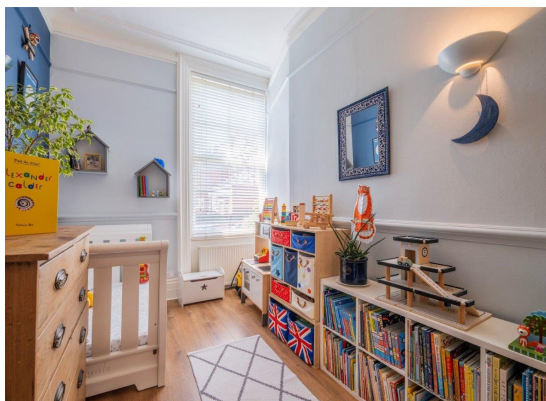
COUNCIL TAX: G



ASTON CHASE

67-71 Park Road
Regent's Park
London, NW1 6XU
020 7724 4724
enquiries@astonchase.com

astonchase.com

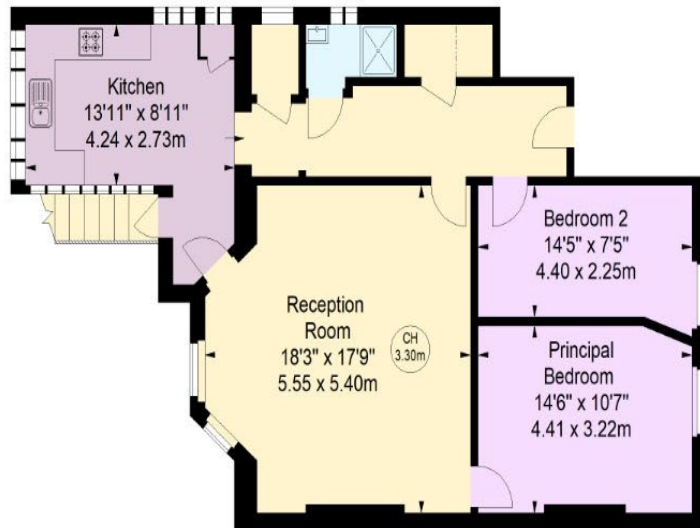
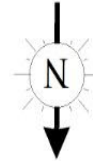


ASTON CHASE

Primrose Hill Road, NW3

Approximate gross internal area

Key : 903 sq ft / 83.89 sq m
CH - Ceiling Height



Raised Ground Floor

The floor plan is not to scale and measurements and areas shown are approximate and therefore should be used for illustrative purposes only. The plan has been prepared in accordance with the RICS code of Measuring Practice and whilst we have confidence in the information produced, it must not be relied on.

If there is any aspect of particular importance, you should carry out or commission your own inspection of the property.

© Orange Tree Photography

Important Notice

These particulars have been prepared in all good faith to give a fair overall view of the property and must not be relied upon as statements or representations of fact. Purchasers must satisfy themselves by inspection or otherwise regarding the items mentioned below and as to the content of these particulars. If any points are particularly relevant to your interest in the property ask for further information.