

ASTONCHASE

astonchase.com

69-71 PARK ROAD
LONDON NW1 6XU
020 7724 4724



CENTURY COURT
ST JOHN'S WOOD
LONDON, NW8

£1,495 PER WEEK
SUBJECT TO CONTRACT

PRINCIPAL AGENT

This stunning interior-designed 2 bedroom apartment has spectacular views over Lords Cricket Ground. Comprising two luxury bedrooms & two bathrooms, a wonderful living room with separate formal dining area, an exceptional bespoke kitchen with Italian stone worktops and a generous sized balcony, you will find the most incredible views over Lords Cricket Ground.

The property also benefits from a concierge, two passenger lifts & one allocated parking space.

ASTONCHASE

astonchase.com

69-71 PARK ROAD
LONDON NW1 6XU
020 7724 4724



ACCOMMODATION

- Two Bedrooms
- Two Bathrooms
- Reception Room
- Dining Area
- Bespoke Kitchen

AMENITIES

- Balcony Overlooking Lord's Cricket Ground
- Concierge
- Passenger Lift
- Parking Space

COUNCIL TAX

Westminster (Band H)

EPC RATING:

C

IMPORTANT NOTICE

These particulars have been prepared in all good faith to give a fair overall view of the property and must not be relied upon as statements or representations of fact. Purchasers must satisfy themselves by inspection or otherwise regarding the items mentioned below and as to the content of these particulars. If any points are particularly relevant to your interest in the property ask for further information.

ASTONCHASE

astonchase.com

69-71 PARK ROAD
LONDON NW1 6XU
020 7724 4724

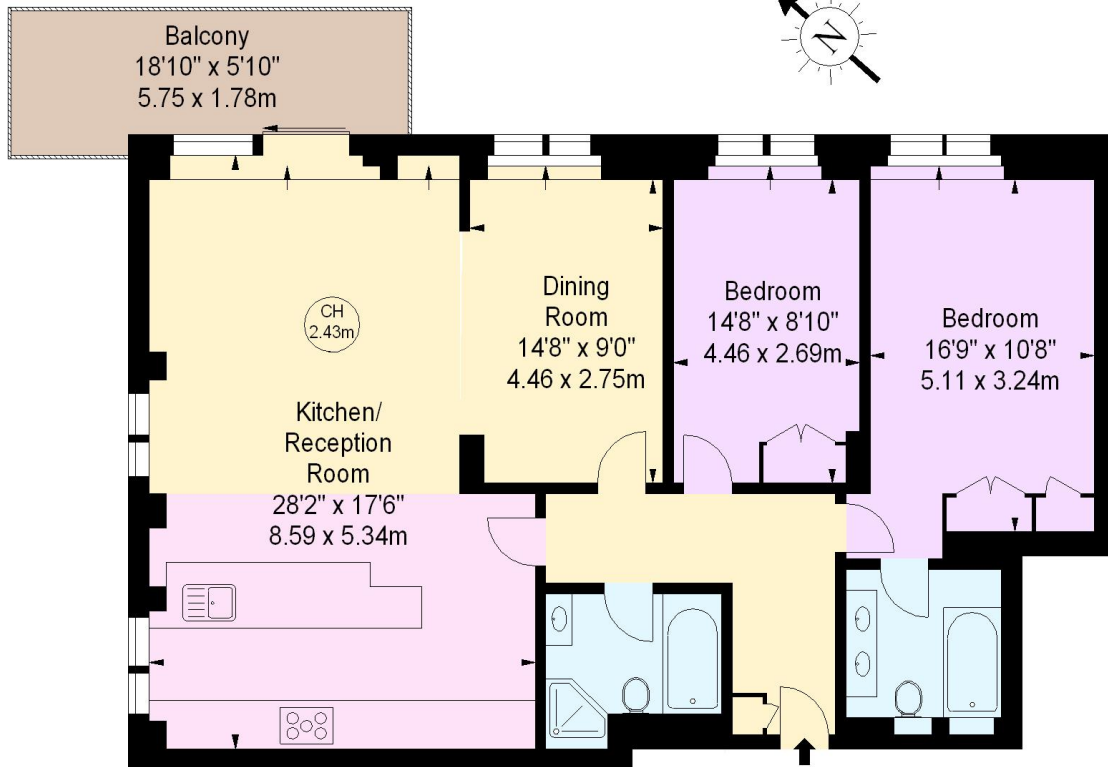


IMPORTANT NOTICE

These particulars have been prepared in all good faith to give a fair overall view of the property and must not be relied upon as statements or representations of fact. Purchasers must satisfy themselves by inspection or otherwise regarding the items mentioned below and as to the content of these particulars. If any points are particularly relevant to your interest in the property ask for further information.

Century Court, NW8
Approximate gross internal area
1190 sq ft / 100.55 sq m

Key :
CH - Ceiling Height



Eleventh Floor

The floor plan is not to scale and measurements and areas shown are approximate and therefore should be used for illustrative purposes only. The plan has been prepared in accordance with the RICS code of Measuring Practice and whilst we have confidence in the information produced, it must not be relied on. If there is any aspect of particular importance, you should carry out or commission your own inspection of the property.
Copyright of FeaturePRO.