



ST STEPHENS CLOSE

Avenue Road
St John's Wood
London
NW8

Guide Price
£3,150,000

Joint Sole Agent

This generously proportioned 4/5 bedroom family apartment (2,407 sq. ft.) occupies the top floor of a reputable portered purpose build block nestled along a secluded road in St John's Wood.

The layout is thoughtfully designed, separating living and bedroom areas, accommodation includes a spacious eat-in kitchen, utility room, reception room, dining area, and a versatile playroom/double bedroom option. With good ceiling height throughout and abundant natural light, the apartment offers a bright and airy living within a secure development.

ASTON CHASE

67-71 Park Road
Regent's Park
London, NW1 6XU
020 7724 4724
enquiries@astonchase.com

astonchase.com

ST STEPHENS CLOSE

Avenue Road
St John's Wood
London
NW8

Guide Price
£3,150,000
Subject To Contract

Added conveniences include 24-hour portorage, two parking spaces, guest parking, beautifully landscaped communal gardens, and exclusive access to Primrose Hill via a private gate. St Stephen's Close is also conveniently close to the vast expanses of Regent's Park. St John's Wood High Street, renowned for its array of shops, boutiques, and dining establishments, is just a short distance away (approximately 0.4 miles) as well as St John's Wood Underground Station (Jubilee Line).

Joint Sole Agent

Leasehold 971 Years
+ Share of Freehold

Reserve Fund: £5,600 P/A
Service Charge: £17,100 P/A
Ground Rent: £400 P/A
Heating & Hot Water: £8,300 P/A



ASTON CHASE

67-71 Park Road
Regent's Park
London, NW1 6XU
020 7724 4724
enquiries@astonchase.com

astonchase.com

ACCOMMODATION

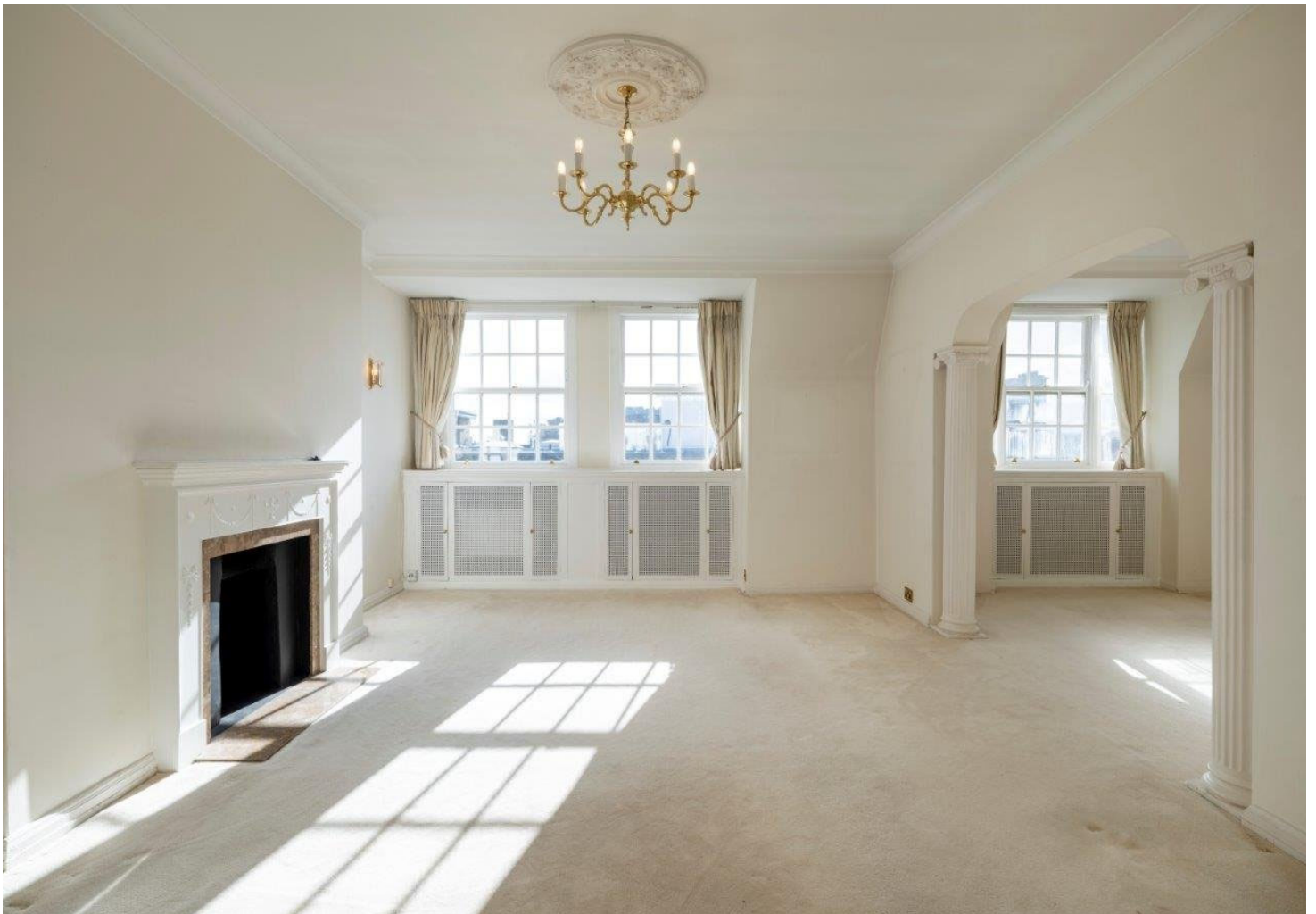
- 4/5 Bedrooms
- Family Room
- En Suite Shower Room
- 2 Bathrooms
- Guest WC
- Reception Room
- Dining Room
- Kitchen
- Utility Room

AMENITIES

- Entry Phone
- 24 Hour Porter
- Lift
- Parking

COUNCIL TAX: H

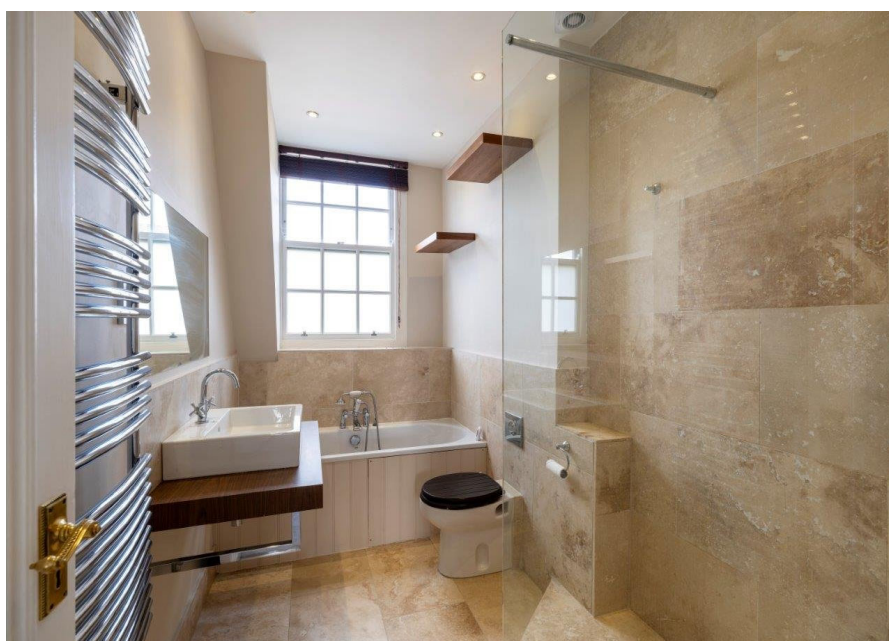
EPC RATING: E



ASTON CHASE

67-71 Park Road
Regent's Park
London, NW1 6XU
020 7724 4724
enquiries@astonchase.com

astonchase.com



ASTON CHASE

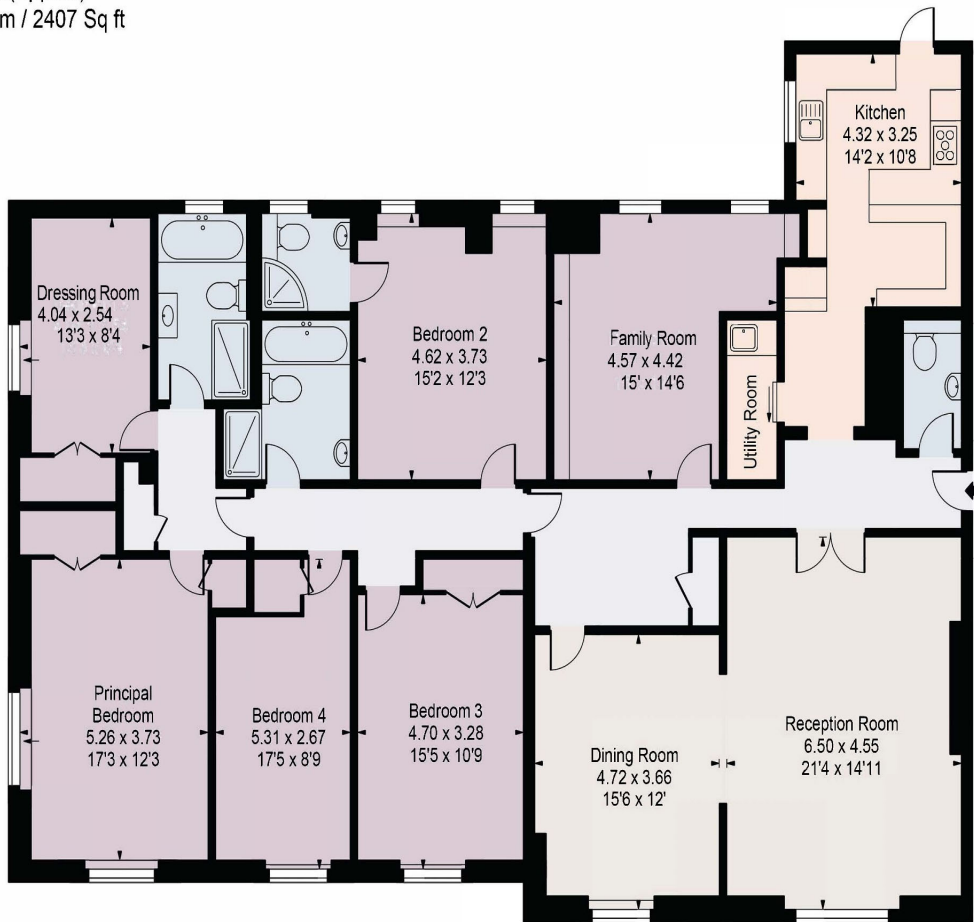
67-71 Park Road
Regent's Park
London, NW1 6XU
020 7724 4724
enquiries@astonchase.com

astonchase.com



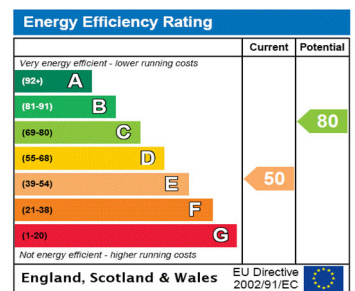
ASTON CHASE

St. Stephen's Close
 Gross Internal Area (Approx)
 Total = 223.62 Sq m / 2407 Sq ft



Fourth Floor

Surveyed and drawn in accordance with the International Property Measurement Standards (IPMS 2: Residential)
 For Illustration Purposes Only - Not To Scale



67-71 Park Road
 Regent's Park
 London, NW1 6XU
 020 7724 4724
 enquiries@astonchase.com

astonchase.com



Important Notice

These particulars have been prepared in all good faith to give a fair overall view of the property and must not be relied upon as statements or representations of fact. Purchasers must satisfy themselves by inspection or otherwise regarding the items mentioned below and as to the content of these particulars. If any points are particularly relevant to your interest in the property ask for further information.