

ASTON CHASE



CHAPPELL LOFTS

Belmont Street, Camden, NW1

ASKING PRICE

£3,000 per week

ASTON CHASE

CHAPPELL LOFTS

PROPERTY VIDEO AVAILABLE

A superb 2 bedroom loft style apartment with balcony, set in the heart of London's vibrant Camden. This unique address benefits from a spectacular Club Lounge providing residents with a private VIP entertainment venue for relaxation and entertaining. Facilities include a club lounge, bespoke cocktail bar/DJ booth, party/club sound/lighting system; 183 inch cinema screen, swimming pool, spa pool and gymnasium.

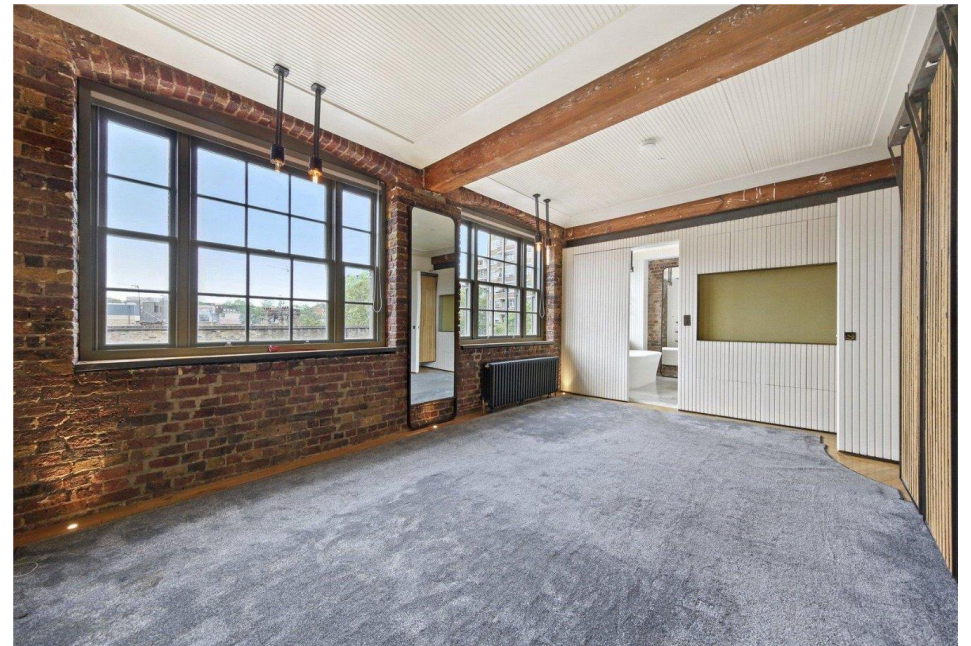
Chappell Lofts is the conversion of the famous Victorian era Chappell Piano factor.

ACCOMMODATION

Principal Bedroom with En-Suite Bathroom, One Further Bedroom, One Further Shower Room, Open Plan Reception Room Incorporating Dining Area and Fully Fitted Kitchen, Study/Bedroom Three, Guest Bathroom

AMENITIES

Balcony, Residents Only Leisure Area Including Swimming Pool and Gymnasium, Daytime Concierge Service



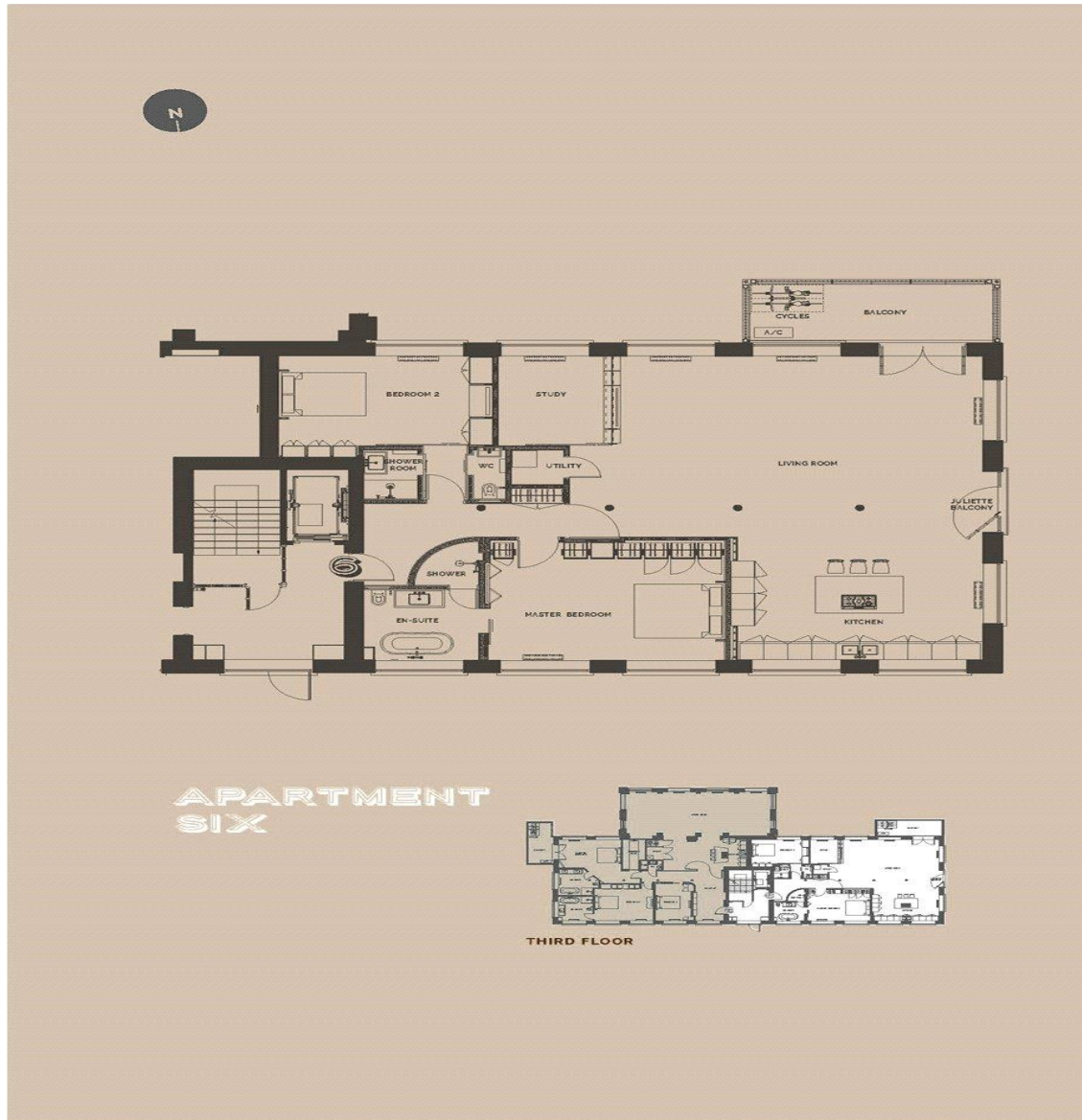
ASTON CHASE



ASTON CHASE



ASTON CHASE



Energy Efficiency Rating

| | Current | Potential |
|---|---------|-----------|
| Very energy efficient - lower running costs | | |
| (92+) A | | |
| (81-91) B | 84 | 85 |
| (69-80) C | | |
| (55-68) D | | |
| (39-54) E | | |
| (21-38) F | | |
| (1-20) G | | |
| Not energy efficient - higher running costs | | |

England, Scotland & Wales

EU Directive
2002/91/EC



67-71 Park Road
Regent's Park
London NW1 6XU

020 7724 4724

astonchase.com



IMPORTANT NOTICE

These particulars are a guide given in good faith and are believed to be correct at the time of printing. Aston Chase give no representation as to their accuracy and potential purchasers or tenants must satisfy themselves by inspection or otherwise as to their correctness. No employee of Aston Chase has authority to make or give any representation or warranty in relation to this property.