



## NEVILLE DRIVE

Hampstead Garden Suburb  
London  
N2

Asking Price  
£5,600,000

Sole Agent

A rare opportunity to acquire a well-planned (388 sq m/4,176 sq ft) lateral detached family house in this highly sought after location with a large south-facing garden that directly backs onto Hampstead Golf Course.

# ASTON CHASE

67-71 Park Road  
Regent's Park  
London, NW1 6XU  
020 7724 4724  
enquiries@astonchase.com

astonchase.com

## NEVILLE DRIVE

Hampstead Garden Suburb  
London  
N2

Asking Price  
£5,600,000  
Subject To Contract

Sole Agent

Freehold

The house, which is presented in excellent decorative order throughout is set behind a sweeping carriage drive that provides spacious and versatile family accommodation and is situated moments away from Hampstead Heath Extension.





# ASTON CHASE

67-71 Park Road  
Regent's Park  
London, NW1 6XU  
020 7724 4724  
enquiries@astonchase.com

astonchase.com

## ACCOMMODATION

- Principal Bedroom with En-Suite Bathroom
- Four Further Bedrooms (Two with En-Suite Bathrooms)
- Family Bathroom
- Entrance Hall
- Reception Room
- Dining Room
- Office/Family Room
- Kitchen/Breakfast Room
- Utility Room
- Guest Cloakroom

## AMENITIES

- 91ft Rear Garden
- Patio
- Off Street Parking
- Garage

**COUNCIL TAX: H**

**EPC RATING: E**



# ASTON CHASE

67-71 Park Road  
Regent's Park  
London, NW1 6XU  
020 7724 4724  
enquiries@astonchase.com

astonchase.com





# ASTON CHASE

67-71 Park Road  
Regent's Park  
London, NW1 6XU  
020 7724 4724  
enquiries@astonchase.com

astonchase.com



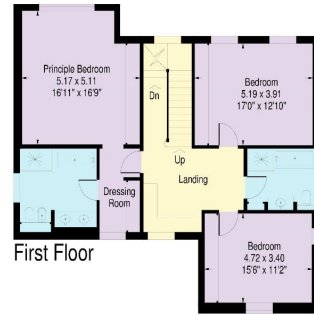
# ASTON CHASE



Neville Drive, London N2

Approximate Gross Internal Area:  
388.0 sq.m. / 4176 sq.ft.  
(including reduced height area  
below 1.5m - 42.8 sq.m. / 461 sq.ft.)

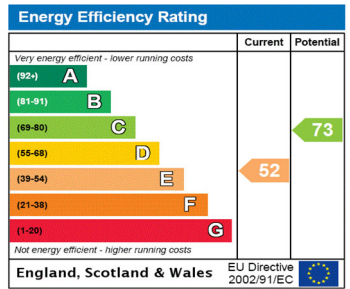
Approximate site area:  
0.1 Hectares (0.26 acres)



APPROX. SCALE  
0 1 2 3M  
0 1 2 3 4 5 10Ft

www.ProplanUK.co.uk

This plan is for guidance only and must not be relied upon as a statement of fact.



67-71 Park Road  
Regent's Park  
London, NW1 6XU  
020 7724 4724  
enquiries@astonchase.com

astonchase.com



## Important Notice

These particulars have been prepared in all good faith to give a fair overall view of the property and must not be relied upon as statements or representations of fact. Purchasers must satisfy themselves by inspection or otherwise regarding the items mentioned below and as to the content of these particulars. If any points are particularly relevant to your interest in the property ask for further information.