



MANOR MANSIONS

Belsize Grove
London
NW3

Guide Price
£2,000,000

Sole Agent

A truly rare opportunity to acquire this lateral four bedroom apartment (154.77 sq m/1,666 sq ft) situated in the ever sought after Manor Mansions, on the corner of Belsize Park Gardens and Belsize Grove, a quiet and leafy residential location in the heart of Belsize Village. The apartment is located on the second floor of an impressive Mansion building. Further attributes include; four bedrooms, two bathrooms, large south facing reception room, separate kitchen, high ceilings, period features, an abundance of natural light front to back with incredible volume.

ASTON CHASE

67-71 Park Road
Regent's Park
London, NW1 6XU
020 7724 4724
enquiries@astonchase.com

astonchase.com

MANOR MANSIONS

Belsize Grove
London
NW3

Guide Price
£2,000,000
Subject To Contract

Sole Agent

Leasehold 951 Years

Service Charge: £4,039 P/A
(Including Ground Rent)

Situated on the corner of Belsize Park Gardens and Belsize Grove, which is ideally located for all the amenities of Belsize Village, England's Lane, Haverstock Hill and is within walking distance of Primrose Hill. It is conveniently located only a short walk from Swiss Cottage Underground Station (Jubilee Line), Belsize Park and Hampstead Underground stations (Northern Line) and Hampstead Heath Overground station.



ASTON CHASE

67-71 Park Road
Regent's Park
London, NW1 6XU
020 7724 4724
enquiries@astonchase.com

astonchase.com

ACCOMMODATION

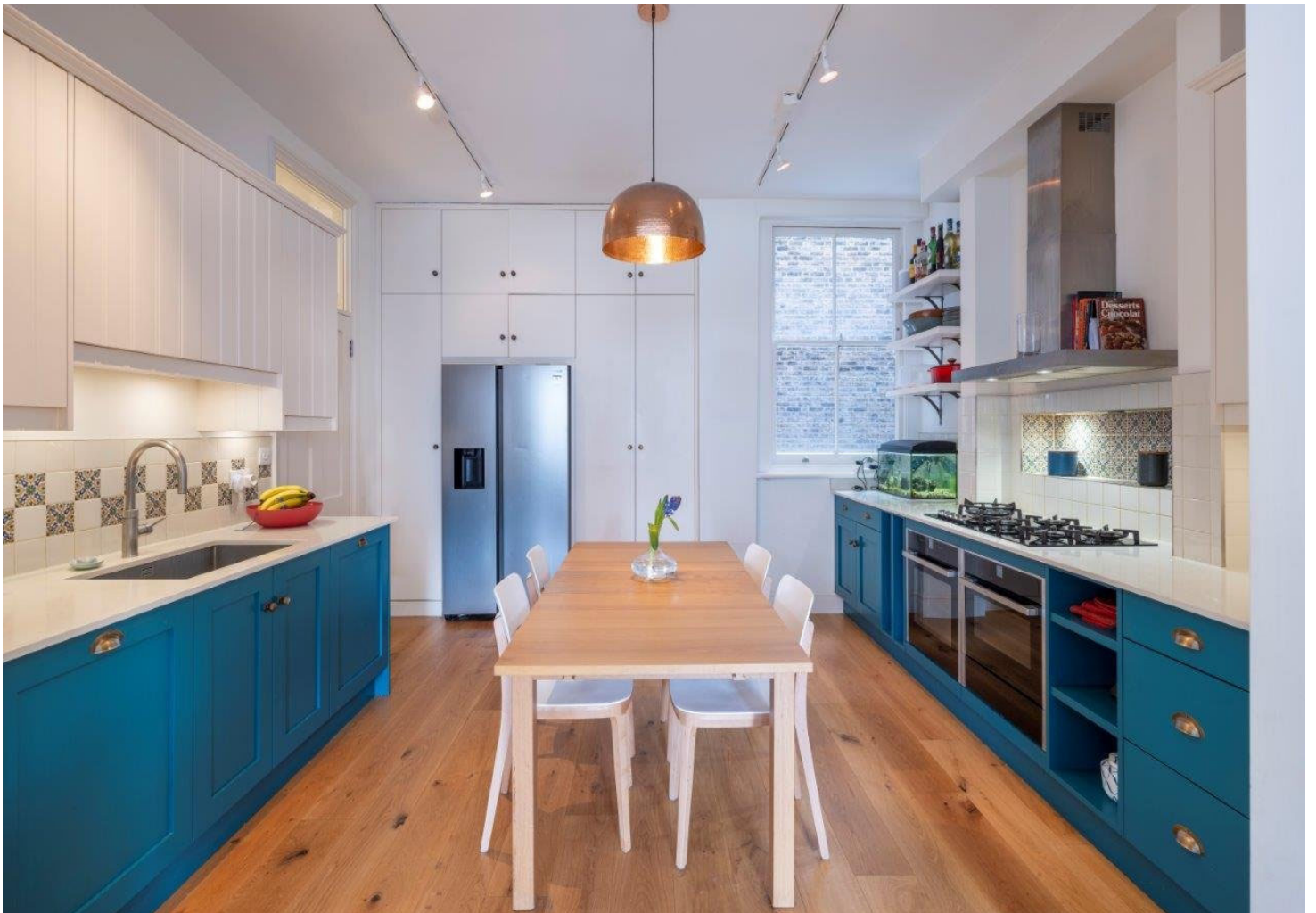
- Large South Facing Reception Room
- Separate Kitchen
- Principal Bedroom
- Three Further Bedrooms
- Two Bathrooms
- Utility Room

AMENITIES

- High Ceilings
- Period Features

COUNCIL TAX: G

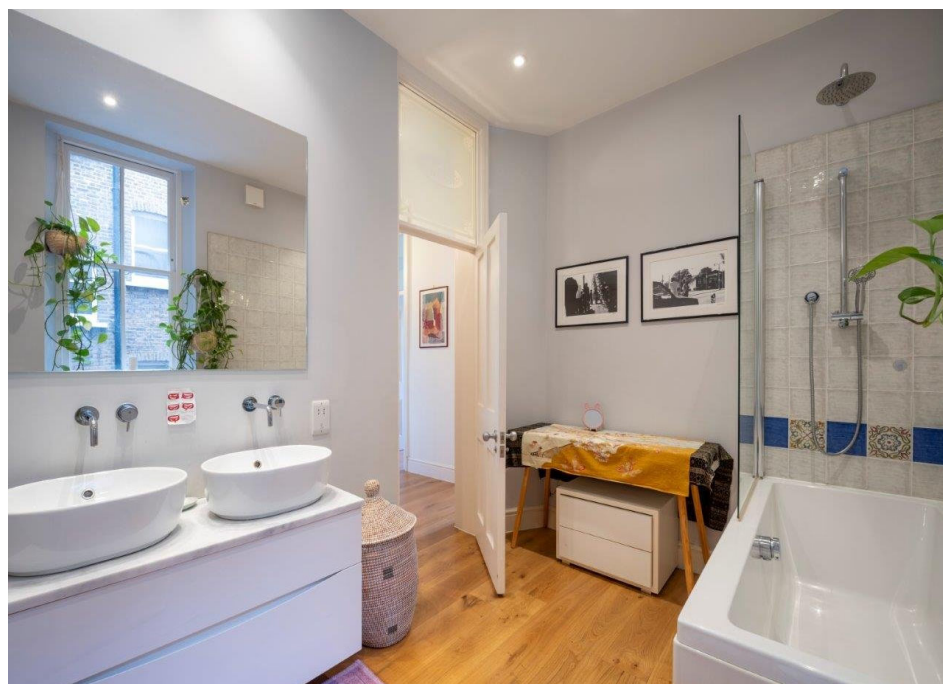
EPC RATING: TBC



ASTON CHASE

67-71 Park Road
Regent's Park
London, NW1 6XU
020 7724 4724
enquiries@astonchase.com

astonchase.com



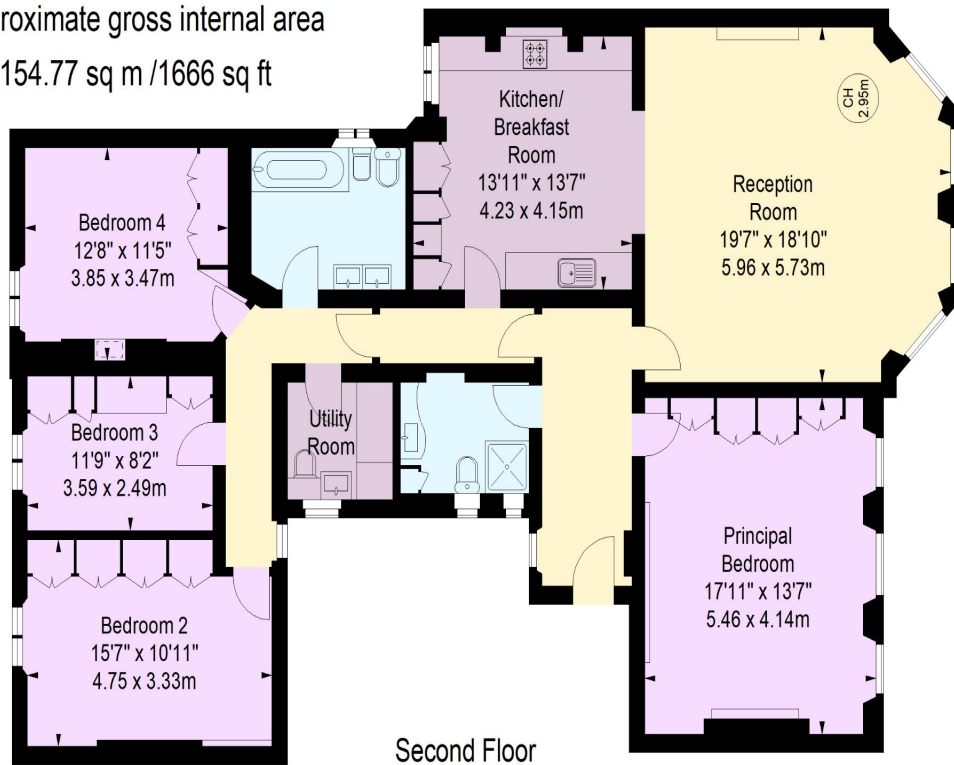
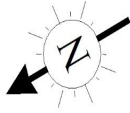
ASTON CHASE

Manor Mansions, NW3

Approximate gross internal area

154.77 sq m / 1666 sq ft

Key :
CH - Ceiling Height



The floor plan is not to scale and measurements and areas shown are approximate and therefore should be used for illustrative purposes only.

The plan has been prepared in accordance with the RICS code of Measuring Practice and whilst we have confidence in the information produced, it must not be relied on.

If there is any aspect of particular importance, you should carry out or commission your own inspection of the property.

© Orange Tree Photography

Important Notice

These particulars have been prepared in all good faith to give a fair overall view of the property and must not be relied upon as statements or representations of fact. Purchasers must satisfy themselves by inspection or otherwise regarding the items mentioned below and as to the content of these particulars. If any points are particularly relevant to your interest in the property ask for further information.