

ASTON CHASE



DEVONSHIRE PLACE
Marylebone, London, W1G

ASTON CHASE

DEVONSHIRE PLACE

VIRTUAL TOUR & PROPERTY VIDEO AVAILABLE

A rare and spacious 3-bedroom duplex residence set at the top of an exceptional Georgian townhouse with private lift access.

Located on the east side of Devonshire Place (which is a wide-open and tree-lined street), the building is within a 5-minute walk from Regent's Park and only a 3-minute walk from Marylebone High Street. It is further within easy walking distance of the iconic cultural, recreational and entertainment amenities of London's West End.

ACCOMMODATION

Kitchen/Living Room, Principal Bedroom with En-Suite Shower Room, Bedroom Two, Family Bathroom, Bedroom Three, Shower Room

AMENITIES

Prewired Intruder Alarm System, Fire Alarm and Smoke Detection System, HD Video Door Entry System, Electric Underfloor Heating to Bathrooms, Lift Serves 2nd to 4th Floor



ASTON CHASE



ASTON CHASE



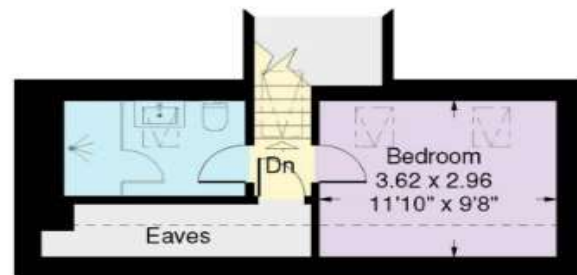
Flat 5 - Top Floor Duplex 16 Devonshire Place

Approximate Gross Internal Area:
127.1 sq.m. / 1369 sq.ft.

(Including reduced height area
below 1.5m - 5.2 sq.m. / 56 sq.ft.)

www.ProplanUK.co.uk

This plan is for guidance only
and must not be relied upon
as a statement of fact.




Fifth Floor (Mezzanine)



Fourth Floor

Energy Efficiency Rating

	Current	Potential
Very energy efficient - lower running costs		
(92+) A		
(81-91) B		
(69-80) C	76	76
(55-68) D		
(39-54) E		
(21-38) F		
(1-20) G		
Not energy efficient - higher running costs		
England, Scotland & Wales EU Directive 2002/91/EC 		

IMPORTANT NOTICE

These particulars are a guide given in good faith and are believed to be correct at the time of printing. Aston Chase give no representation as to their accuracy and potential purchasers or tenants must satisfy themselves by inspection or otherwise as to their correctness. No employee of Aston Chase has authority to make or give any representation or warranty in relation to this property.