



DENNING CLOSE

St John's Wood
London
NW8

Guide Price
£3,695,000

Sole Agent

A rare opportunity to purchase a recently renovated, low built townhouse in a private cul-de-sac. The property, located in the heart of St John's Wood, has been beautifully refurbished by the current owners and offer 2,228 sq ft / 207 sq m (GIA) of accommodation, providing 4 bedrooms, 5 bathrooms and large open plan living spaces.

The property further benefits from off-street parking for two cars, two balconies, a study, and a south-facing patio garden.

ASTON CHASE

67-71 Park Road
Regent's Park
London, NW1 6XU
020 7724 4724
enquiries@astonchase.com

astonchase.com

DENNING CLOSE

St John's Wood
London
NW8

Guide Price
£3,695,000
Subject To Contract

Sole Agent

Freehold

Denning Close is discreetly located off Hall Road, within walking distance of St John's Wood High Street with all its fashionable boutique shops, restaurants and nearby to all forms of public transport including St John's Wood Underground Station (Jubilee Line).



ASTON CHASE

67-71 Park Road
Regent's Park
London, NW1 6XU
020 7724 4724
enquiries@astonchase.com

astonchase.com

ACCOMMODATION

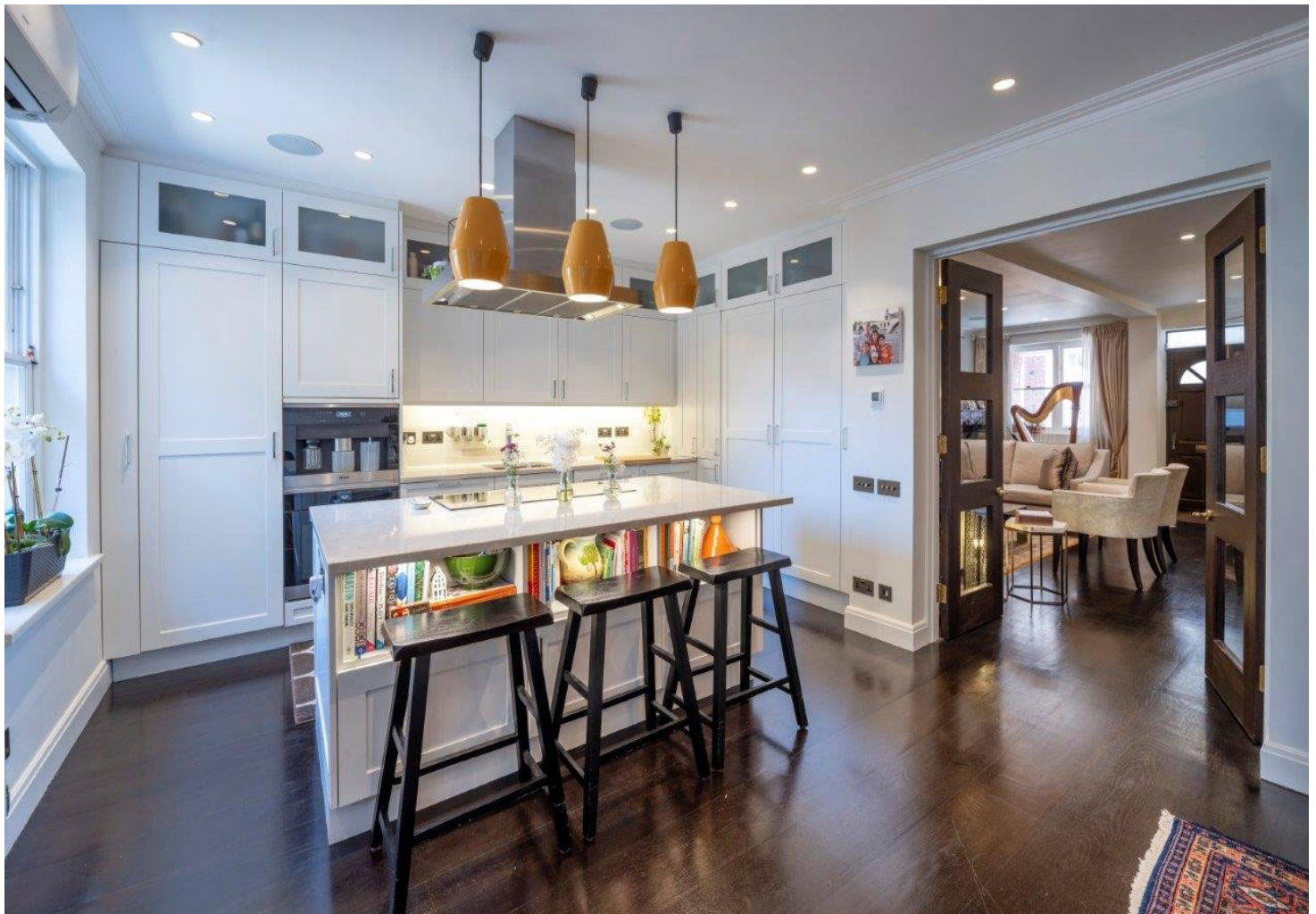
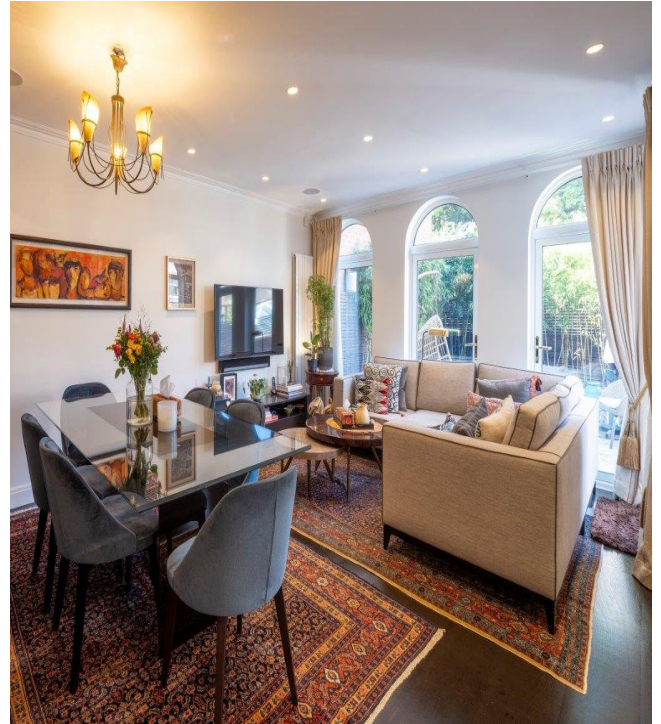
- Principal Bedroom with Dressing Room, en-suite Bathroom and West Facing Balcony
- Three Further Bedrooms (All En-Suite)
- Open Plan Kitchen, Family, Dining Room
- Drawing Room
- Study
- Guest Cloakroom

AMENITIES

- Off Street parking
- Ample Storage
- West Facing Garden

COUNCIL TAX: H

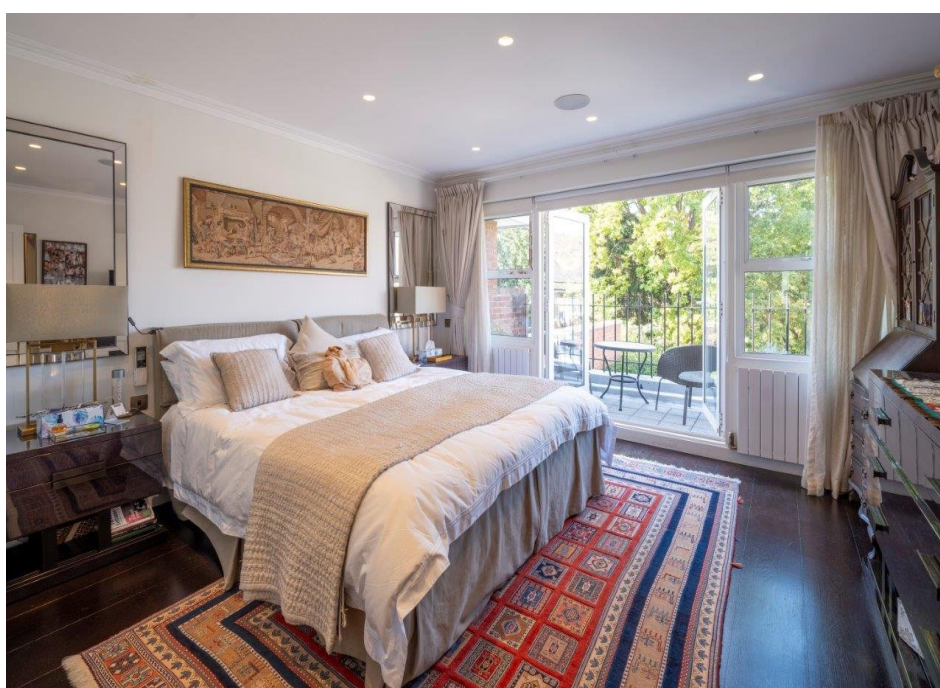
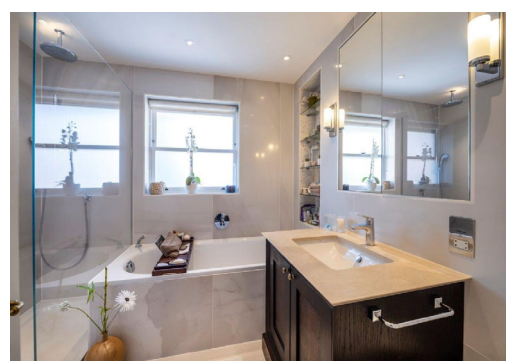
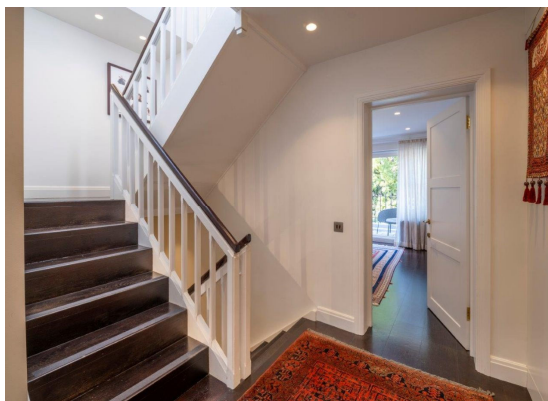
EPC RATING: D



ASTON CHASE

67-71 Park Road
Regent's Park
London, NW1 6XU
020 7724 4724
enquiries@astonchase.com

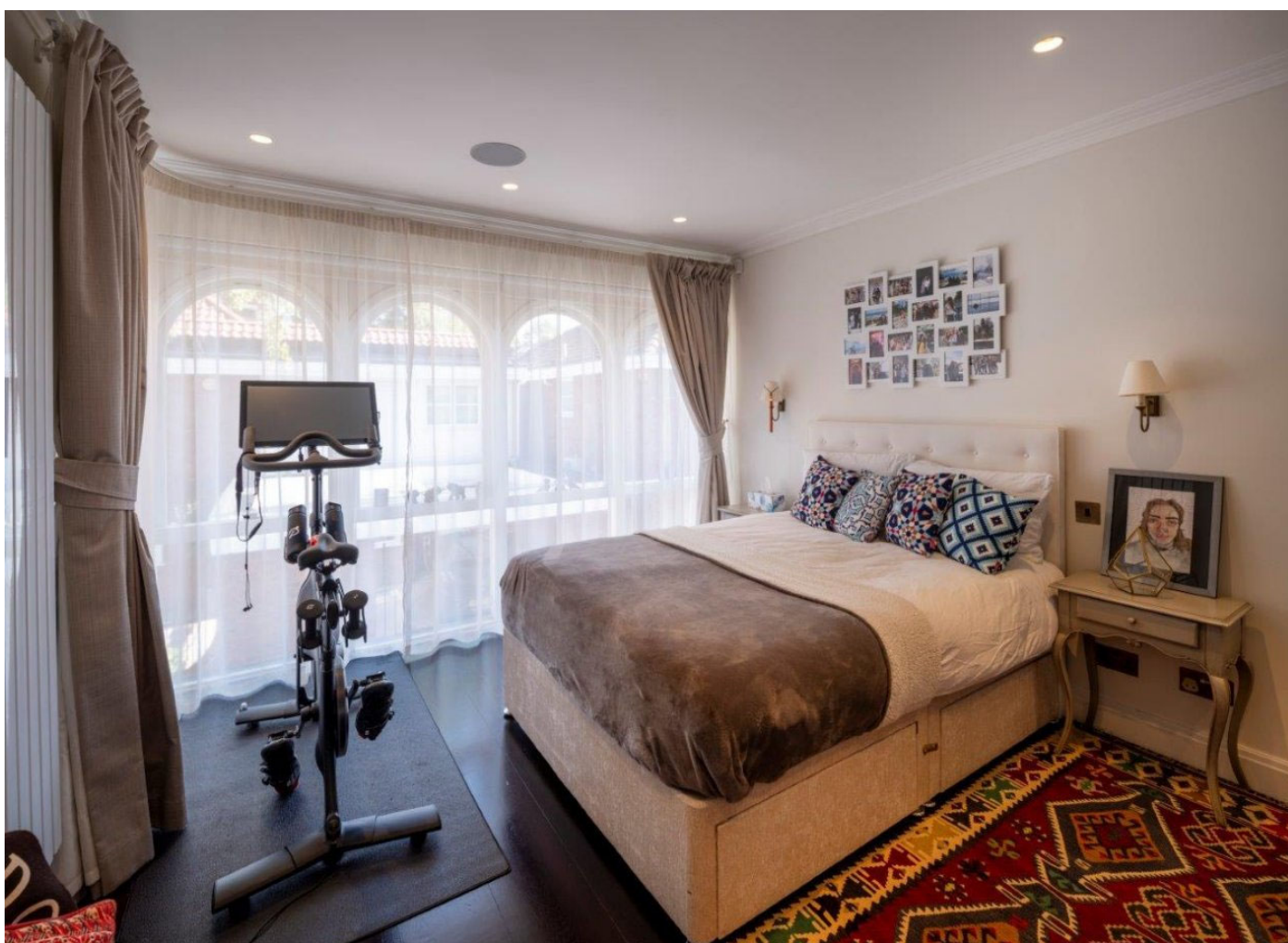
astonchase.com



ASTON CHASE

67-71 Park Road
Regent's Park
London, NW1 6XU
020 7724 4724
enquiries@astonchase.com

astonchase.com



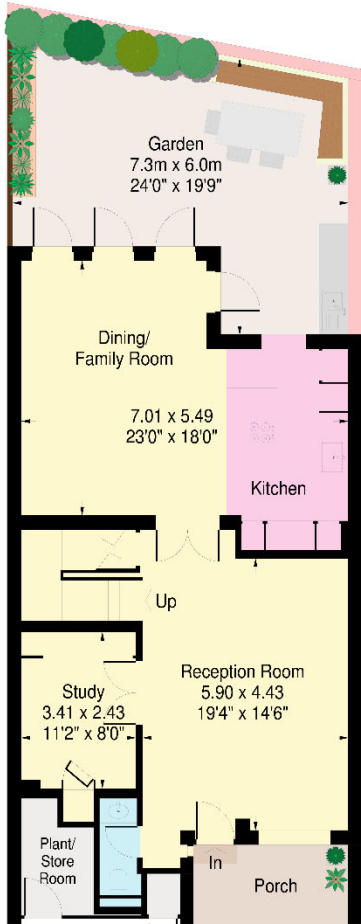
ASTON CHASE

67-71 Park Road
Regent's Park
London, NW1 6XU
020 7724 4724
enquiries@astonchase.com

astonchase.com



ASTON CHASE

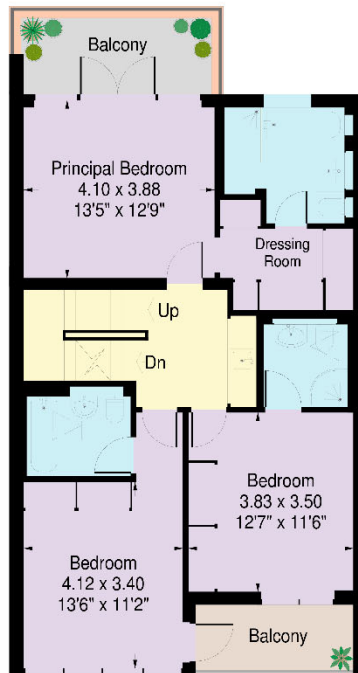


Ground Floor

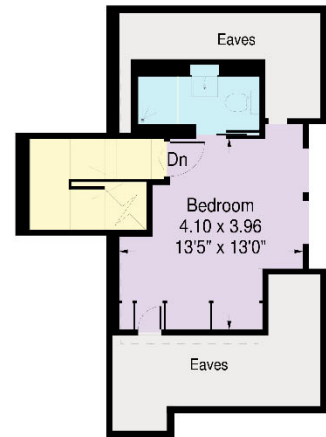
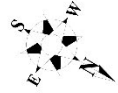
Denning Close, St Johns Wood, London, NW8

Approximate Gross Internal Area:
207.0 sq.m. / 2228 sq.ft.
(Including stores and reduced height eaves area below 1.5m)
Reduced height area - 18.2 sq.m. / 196 sq.ft.

External areas (Garden, balconies & front porch):
53.7 sq.m. / 578 sq.ft.



First Floor



Second Floor

www.ProplanUK.co.uk

This plan is for guidance only and must not be relied upon as a statement of fact.

Energy Efficiency Rating		Current	Potential
Very energy efficient - lower running costs			
(92+)	A		
(81-91)	B		
(69-80)	C		79
(55-68)	D	61	
(39-54)	E		
(21-38)	F		
(1-20)	G		
Not energy efficient - higher running costs			
England, Scotland & Wales		EU Directive 2002/91/EC	

67-71 Park Road
Regent's Park
London, NW1 6XU
020 7724 4724
enquiries@astonchase.com

astonchase.com



Important Notice

These particulars have been prepared in all good faith to give a fair overall view of the property and must not be relied upon as statements or representations of fact. Purchasers must satisfy themselves by inspection or otherwise regarding the items mentioned below and as to the content of these particulars. If any points are particularly relevant to your interest in the property ask for further information.