



## ONE ST JOHN'S WOOD

St. Johns Wood Road  
London  
NW8

Asking Price  
£935,000

Sole Agent

A beautifully presented one-bedroom apartment (42.92 sq m/462 sq ft) located on the second floor at One St John's Wood, which is a Landmark secure development in the heart of NW8.

The property features a spacious reception room, a fully fitted kitchen, a bedroom, and a private balcony. Key highlights include hardwood flooring, underfloor heating, comfort cooling, and a natural stone bathroom.

# ASTON CHASE

67-71 Park Road  
Regent's Park  
London, NW1 6XU  
020 7724 4724  
enquiries@astonchase.com

astonchase.com

## ONE ST JOHN'S WOOD

St. Johns Wood Road  
London  
NW8

Asking Price  
£935,000  
Subject To Contract

Sole Agent

Leasehold 992 Years

Service Charge: £4,868.94 P/A  
Ground Rent: £500 P/A

One St John's Wood is designed to high specifications, offering state-of-the-art facilities for residents. On the ground level, there is a stunning 20-meter pool, two Jacuzzis, a sauna, a steam room, and a top-of-the-range gym. Additional amenities include two meeting rooms, a private dining room, a 24-hour concierge, a cinema room, and a communal roof terrace with views over Lord's Cricket Ground.

Located in the heart of St John's Wood, this beautiful property is within close proximity to various boutique shops, restaurants, and cafés. St. John's Wood underground station (Jubilee Line) is only 0.3 miles away, providing easy access to Bond Street for first-class shopping and dining, or a direct route to Canary Wharf in approximately 20 minutes. Baker Street station is 1 mile away, while Knightsbridge and Mayfair are just a short car journey away.





# ASTON CHASE

67-71 Park Road  
Regent's Park  
London, NW1 6XU  
020 7724 4724  
[enquiries@astonchase.com](mailto:enquiries@astonchase.com)

[astonchase.com](http://astonchase.com)

## ACCOMMODATION

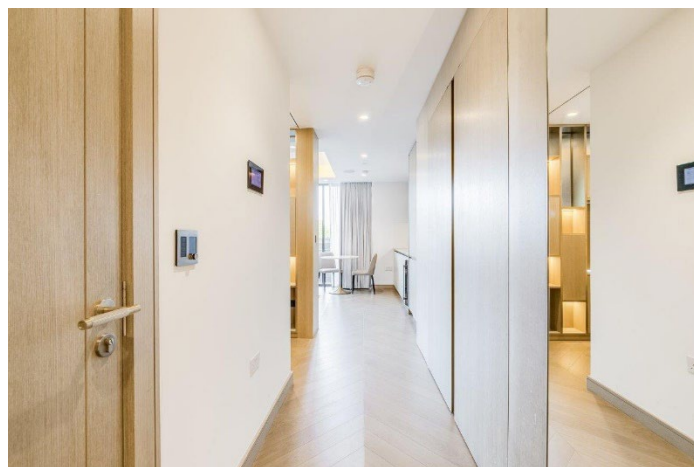
- Spacious Reception
- Fully Fitted Open Plan Kitchen
- One Double Bedroom
- Bathroom

## AMENITIES

- 24 Hour Concierge
- Gym/Swimming Pool
- Roof Terrace with Views of Lords Cricket Ground Close Proximity to Boutique Shops, Restaurants and Cafés

COUNCIL TAX: D

EPC RATING: B



# ASTON CHASE

67-71 Park Road  
Regent's Park  
London, NW1 6XU  
020 7724 4724  
[enquiries@astonchase.com](mailto:enquiries@astonchase.com)

[astonchase.com](http://astonchase.com)



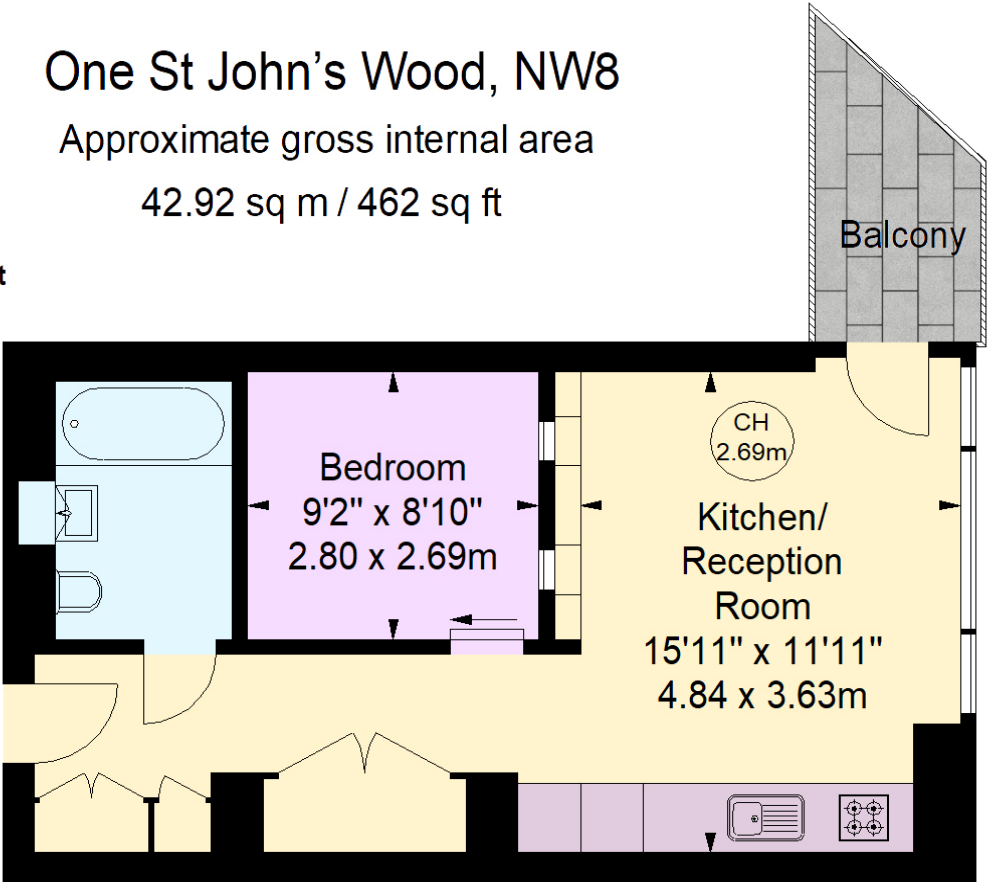
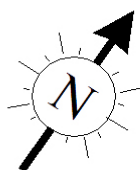


One St John's Wood, NW8

Approximate gross internal area

42.92 sq m / 462 sq ft

Key :  
CH - Ceiling Height



Second Floor



Illustration For Identification Purposes Only.  
All measurements and areas are approximate, not to scale.  
© Orange Tree Photography

Score	Energy rating	Current	Potential
92+	A		
81-91	B	81 B	81 B
69-80	C		
55-68	D		
39-54	E		
21-38	F		
1-20	G		

