

ASTON CHASE



BERKELEY COURT
Glentworth Street, Marylebone NW1

ASKING PRICE
£3,250 per week

ASTON CHASE

BERKELEY COURT

Experience the blend of contemporary style and classic comfort in this newly renovated four bedroom penthouse apartment, situated on the 8th floor of Berkeley Court, a sought-after building in Marylebone. The apartment boasts a separate, fully equipped eat in kitchen, four ample double bedrooms, each complemented with fitted wardrobes, three bathrooms (one en-suite) and a triple reception room. Additional amenities include a dedicated guest cloakroom, 24/7 concierge service, and exclusive access to a rooftop garden, presenting a beautiful escape with London's skyline as its backdrop.



ACCOMMODATION

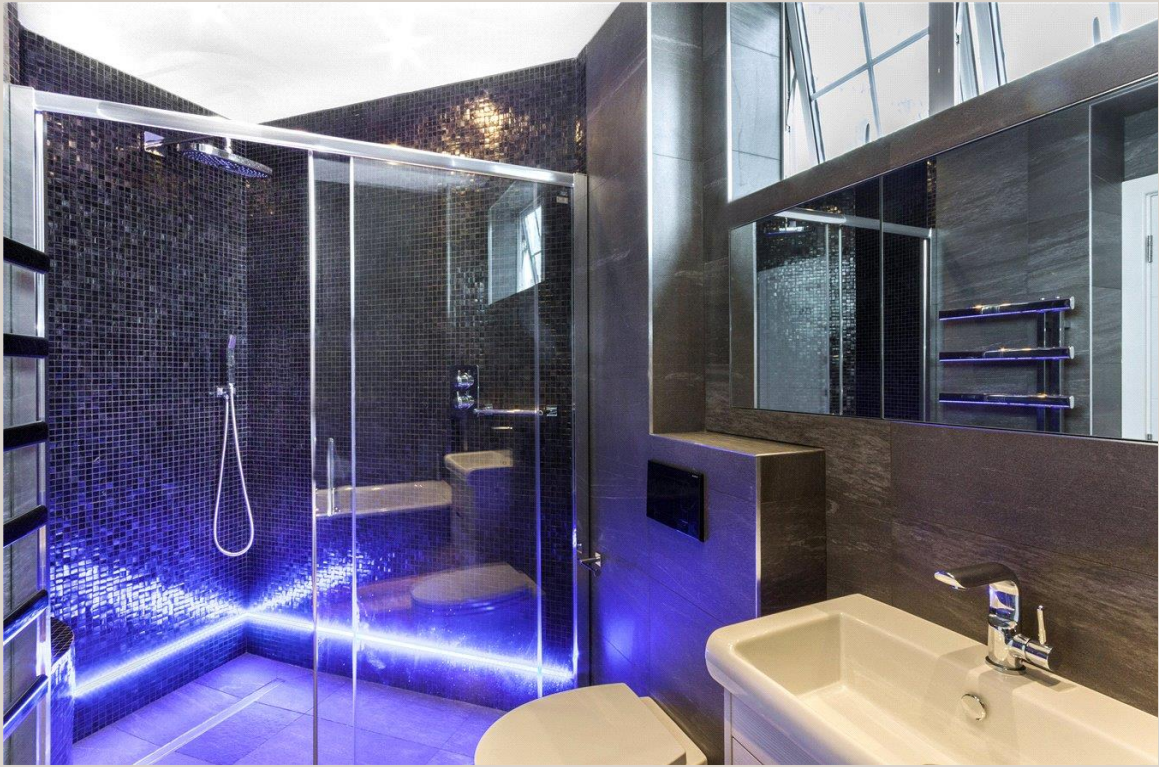
Open Plan Double Reception Room, Fully Fitted Kitchen, Principal Bedroom with En-Suite Bathroom, Three Further Bedrooms, Family Bathroom, Shower Room, Guest Cloakroom

AMENITIES

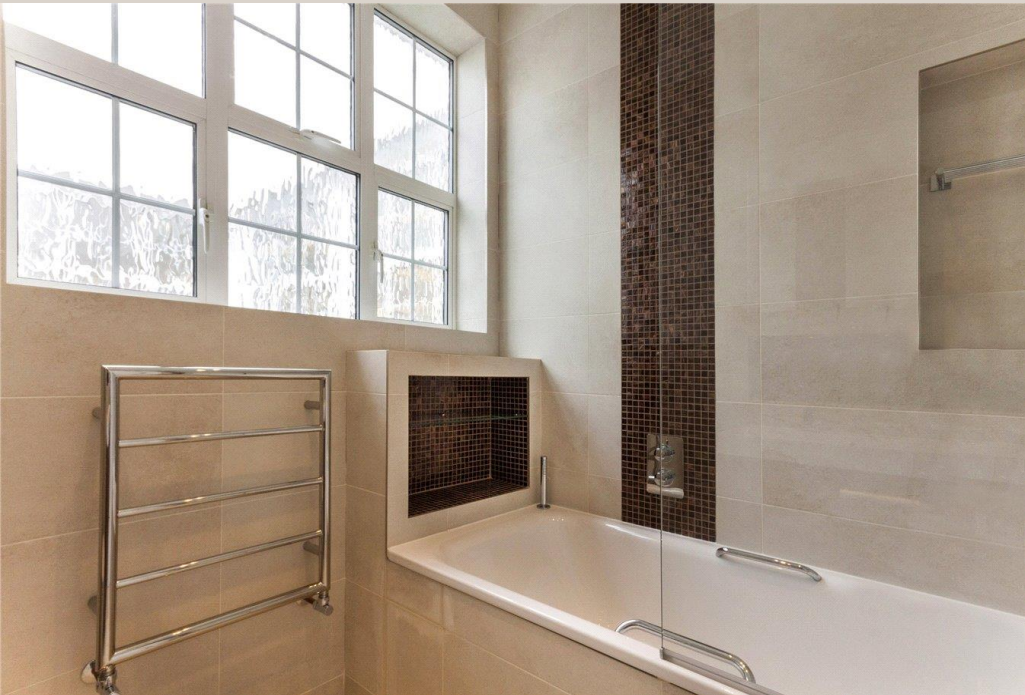
Porter, Balcony, Roof Terrace, Resident's Permit Parking

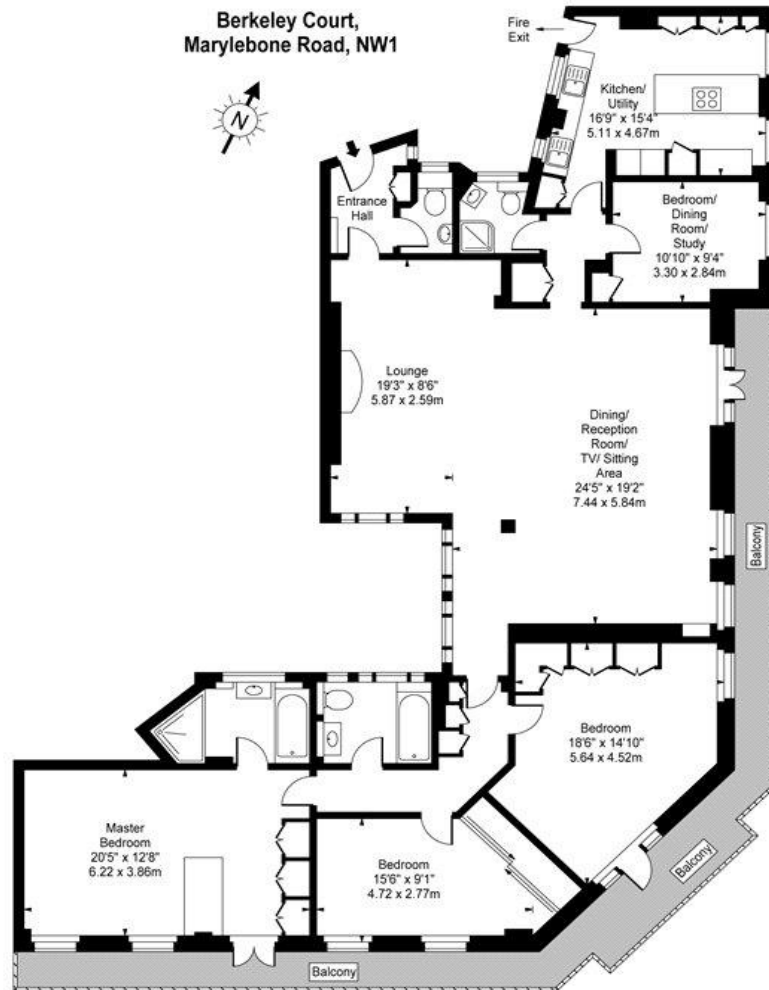


ASTON CHASE



ASTON CHASE





Eighth Floor
 Approx Gross Internal Area 1995 Sq Ft - 185.34 Sq M

For Illustration Purposes Only - Not To Scale
 www.goldlens.co.uk
 Produced for Chestertons
 Ref. No. 002235

Energy Efficiency Rating		Current	Potential
Very energy efficient - lower running costs			
(92+)	A		
(81-91)	B		
(69-80)	C		75
(55-68)	D		
(39-54)	E	40	
(21-38)	F		
(1-20)	G		
Not energy efficient - higher running costs			
England, Scotland & Wales		EU Directive 2002/91/EC	

67-71 Park Road
 Regent's Park
 London NW1 6XU

020 7724 4724

astonchase.com



IMPORTANT NOTICE

These particulars are a guide given in good faith and are believed to be correct at the time of printing. Aston Chase give no representation as to their accuracy and potential purchasers or tenants must satisfy themselves by inspection or otherwise as to their correctness. No employee of Aston Chase has authority to make or give any representation or warranty in relation to this property.