



ST REGIS HEIGHTS

Firecrest Drive
Hampstead
London
NW3

Guide Price
£1,750,000

Sole Agent

A beautiful three double bedroom lateral apartment (148 sq.m/1,602 sq.ft) set on the third floor within one of Hampstead's most secure and sought after gated developments. The property benefits from a spacious reception/dining room, separate kitchen, three large bedrooms, two bathrooms with one en-suite and a further guest cloakroom.

The apartment offers stunning views over London whilst being conveniently located in a peaceful enclave of Hampstead Heath. Presented in good decorative condition with further benefits including three balconies and access to residents parking as well as having the advantage of 2 designated parking spaces in the secure residents underground car park.

ASTON CHASE

67-71 Park Road
Regent's Park
London, NW1 6XU
020 7724 4724
enquiries@astonchase.com

astonchase.com

ST REGIS HEIGHTS

Firecrest Drive
Hampstead
London
NW3

Firecrest Drive is conveniently located within 0.4 miles of all the shops, restaurants and amenities of Hampstead High Street, and Hampstead Underground Station (Northern Line).

Guide Price
£1,750,000
Subject To Contract

Sole Agent

Leasehold 968 Years

Service Charge: £2,987.50 (biannual)
Reserve fund: £952.38 (biannual)



ASTON CHASE

67-71 Park Road
Regent's Park
London, NW1 6XU
020 7724 4724
enquiries@astonchase.com

astonchase.com

ACCOMMODATION

- Principle Bedroom (With En-Suite Bathroom)
- Two Further Bedrooms
- Family Bathroom
- Reception Room
- Dining Room
- Separate Kitchen
- Guest Cloakroom
- Porter
- Gated development
- X3 Balconies

AMENITIES

- Communal Gardens
- X3 Balconies
- Porterage (Daytime Only)
- Underground Parking Space for Two Cars

COUNCIL TAX: H

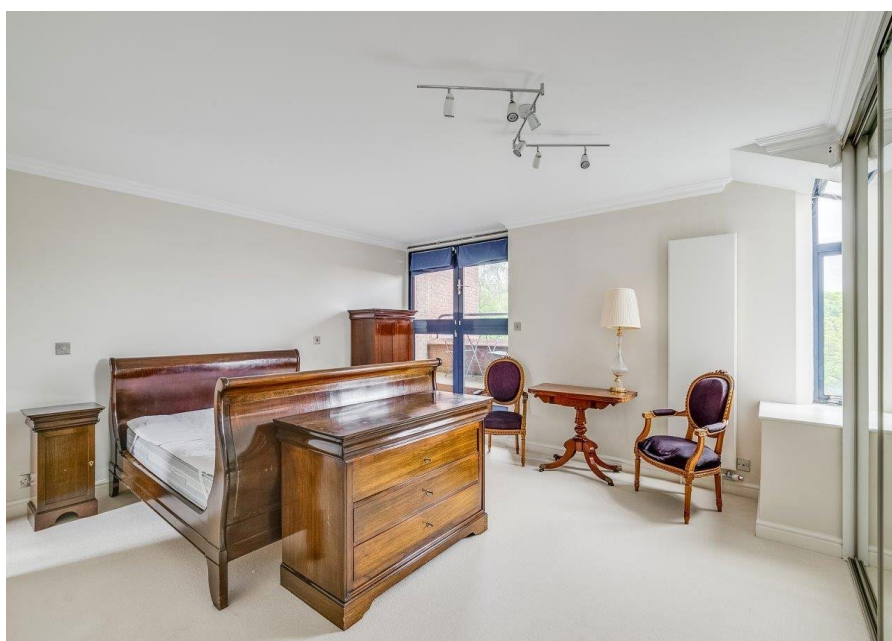
EPC RATING: TBC



ASTON CHASE

67-71 Park Road
Regent's Park
London, NW1 6XU
020 7724 4724
enquiries@astonchase.com

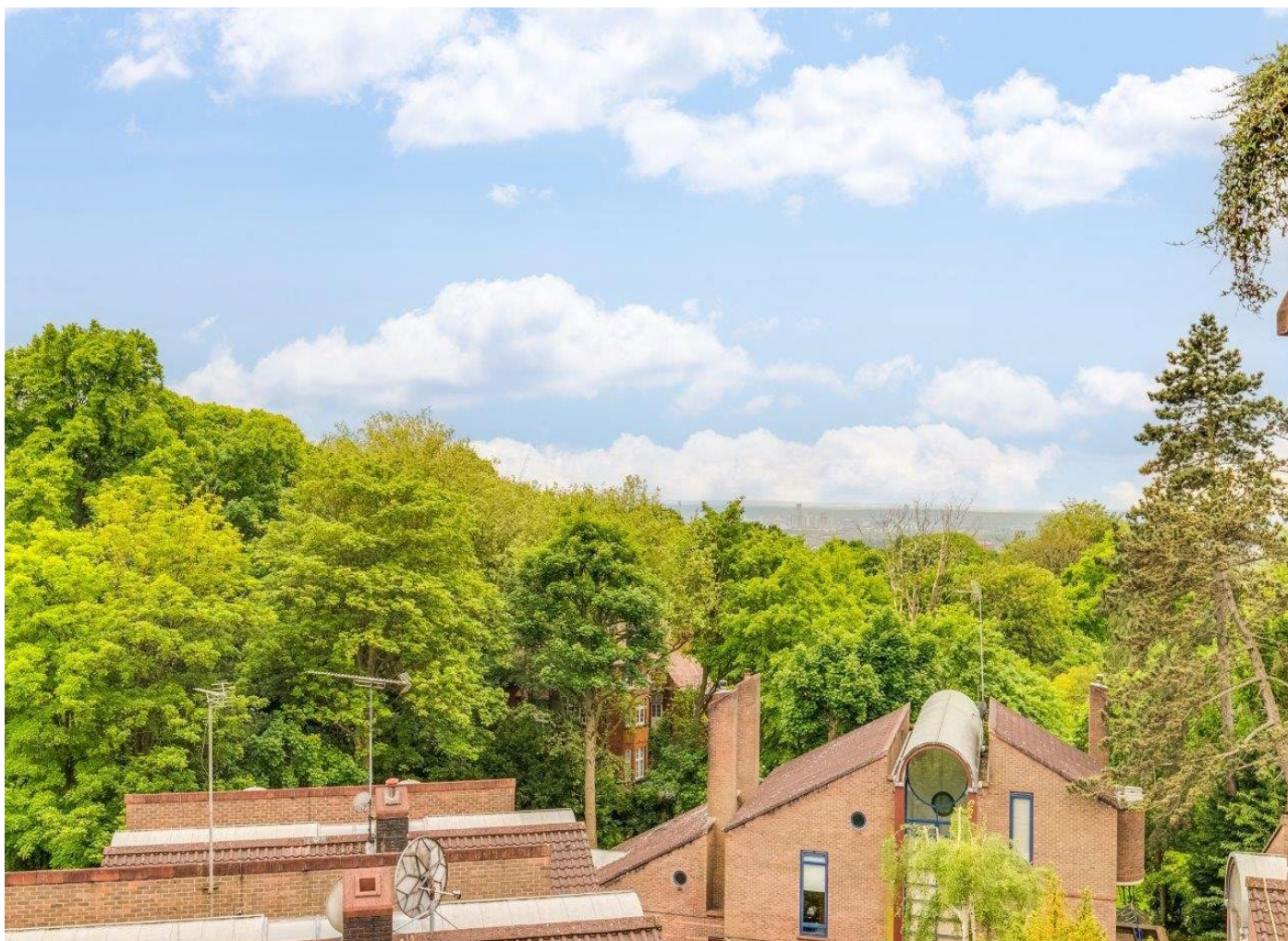
astonchase.com



ASTON CHASE

67-71 Park Road
Regent's Park
London, NW1 6XU
020 7724 4724
enquiries@astonchase.com

astonchase.com

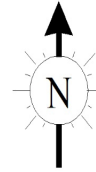


St Regis Heights, NW3

Approximate gross internal area

148.83 sq m / 1,602 sq ft

Key :
CH - Ceiling Height



Third Floor



Illustration For Identification Purposes Only.
All measurements and areas are approximate, not to scale.
© Orange Tree Photography

Important Notice

These particulars have been prepared in all good faith to give a fair overall view of the property and must not be relied upon as statements or representations of fact. Purchasers must satisfy themselves by inspection or otherwise regarding the items mentioned below and as to the content of these particulars. If any points are particularly relevant to your interest in the property ask for further information.