

ASTONCHASE

astonchase.com

69-71 PARK ROAD
LONDON NW1 6XU
020 7724 4724



**BOYDELL COURT
ST JOHN'S WOOD
LONDON, NW8**

**£999 PER WEEK
SUBJECT TO CONTRACT
+Additional Administration Fees**

MULTIPLE AGENT

A beautifully presented three bedroom 5th floor apartment situated in this well maintained purpose built block with 24 hour portorage.

Boydell Court is located within close proximity to the local amenities and underground stations of both Swiss Cottage and St Johns Wood (Jubilee Line).



ACCOMMODATION

- Principal Bedroom (With En-Suite Bathroom)
- 2 Further Bedrooms (Both With En-Suite Bathrooms)
- Reception Room
- Kitchen

AMENITIES

- Unallocated Parking on a First Come First Served Basis
- 24 Hour Porterage
- Lift

COUNCIL TAX

Westminster (Band F)

EPC RATING:

C

ADDITIONAL ADMINISTRATION FEES

Tenancy Agreement Fee per property = £210.

Reference Fee per tenant = £35.

Renewal after fixed term per property = £90.

Please note that these prices include VAT

ASTONCHASE

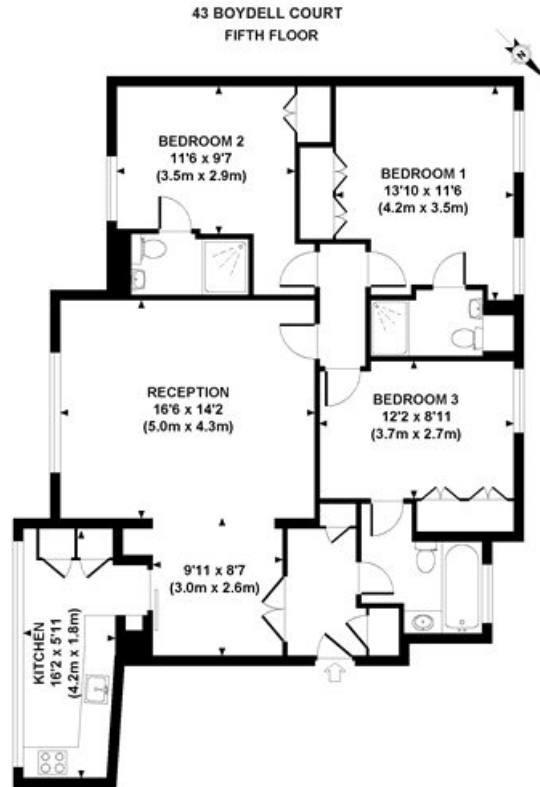
astonchase.com

69-71 PARK ROAD
LONDON NW1 6XU
020 7724 4724



IMPORTANT NOTICE

These particulars have been prepared in all good faith to give a fair overall view of the property and must not be relied upon as statements or representations of fact. Purchasers must satisfy themselves by inspection or otherwise regarding the items mentioned below and as to the content of these particulars. If any points are particularly relevant to your interest in the property ask for further information.



APPROXIMATE GROSS INTERNAL AREA 1062 SQ FT / 99 SQ M

Although every attempt has been made to ensure accuracy, all measurements are approximate. The floor plan is for illustrative purposes only and not to scale. Measured in accordance to RICS standards. DE.PHOTOGRAPHY.NET

Energy Efficiency Rating		Current	Potential
Very energy efficient - lower running costs			
(92+)	A		
(81-91)	B		
(69-80)	C		
(55-68)	D	70	70
(39-54)	E		
(21-38)	F		
(1-20)	G		
Not energy efficient - higher running costs			
England, Scotland & Wales		EU Directive 2002/91/EC	

IMPORTANT NOTICE

These particulars have been prepared in all good faith to give a fair overall view of the property and must not be relied upon as statements or representations of fact. Purchasers must satisfy themselves by inspection or otherwise regarding the items mentioned below and as to the content of these particulars. If any points are particularly relevant to your interest in the property ask for further information.