

ASTON CHASE



CHAPPELL LOFTS

Belmont Street, Camden, NW1

ASKING PRICE

£3,500 per week

ASTON CHASE

CHAPPELL LOFTS

This stunning third floor apartment offers three double bedrooms with two en-suite bathrooms, a further separate shower room, an enormous reception area with an open plan kitchen, a large balcony and boasts over 2,890 square foot of space.

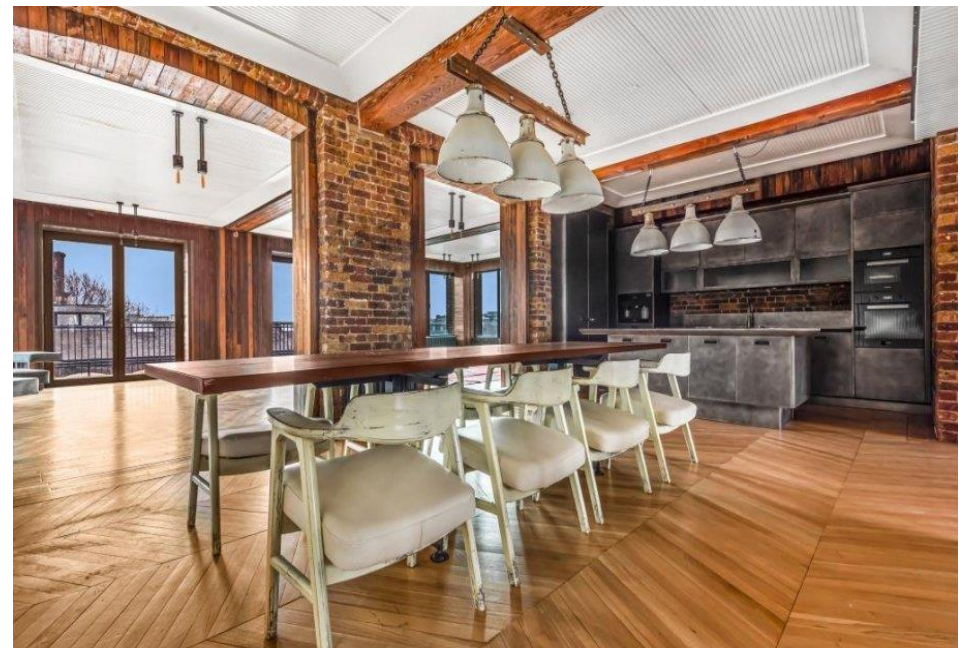
Located in the heart of London's vibrant Camden, this unique address benefits from a spectacular VIP club lounge, bespoke cocktail bar/DJ booth, party/club sound/lighting system; 183 inch cinema screen, swimming pool, spa pool and gymnasium.

ACCOMMODATION

- 3 Bedrooms
- 3 bathrooms (2 en-suite)
- 2890 sq ft of living and entertaining space
- Open plan kitchen/reception room
- A private balcony

AMENITIES

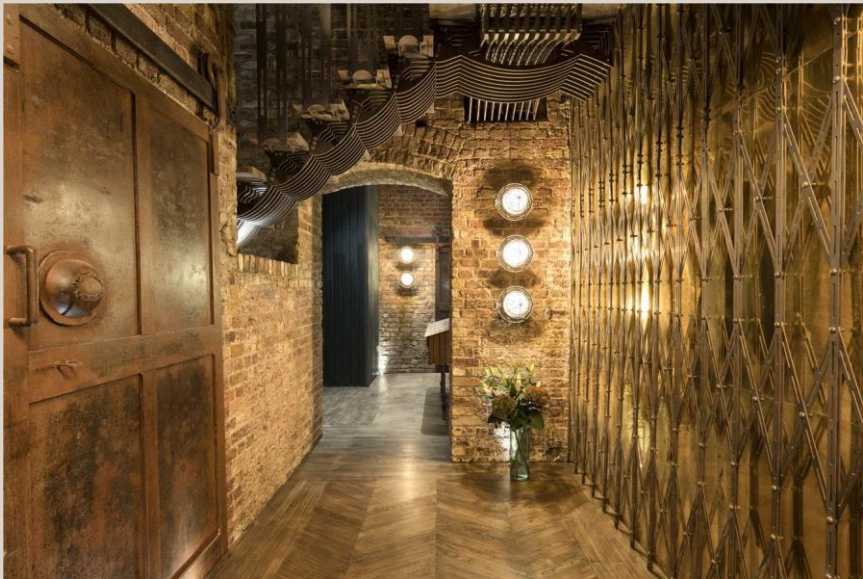
- Spa swimming Pool
- Gymnasium
- 183 inch Cinema Screen
- VIP club lounge



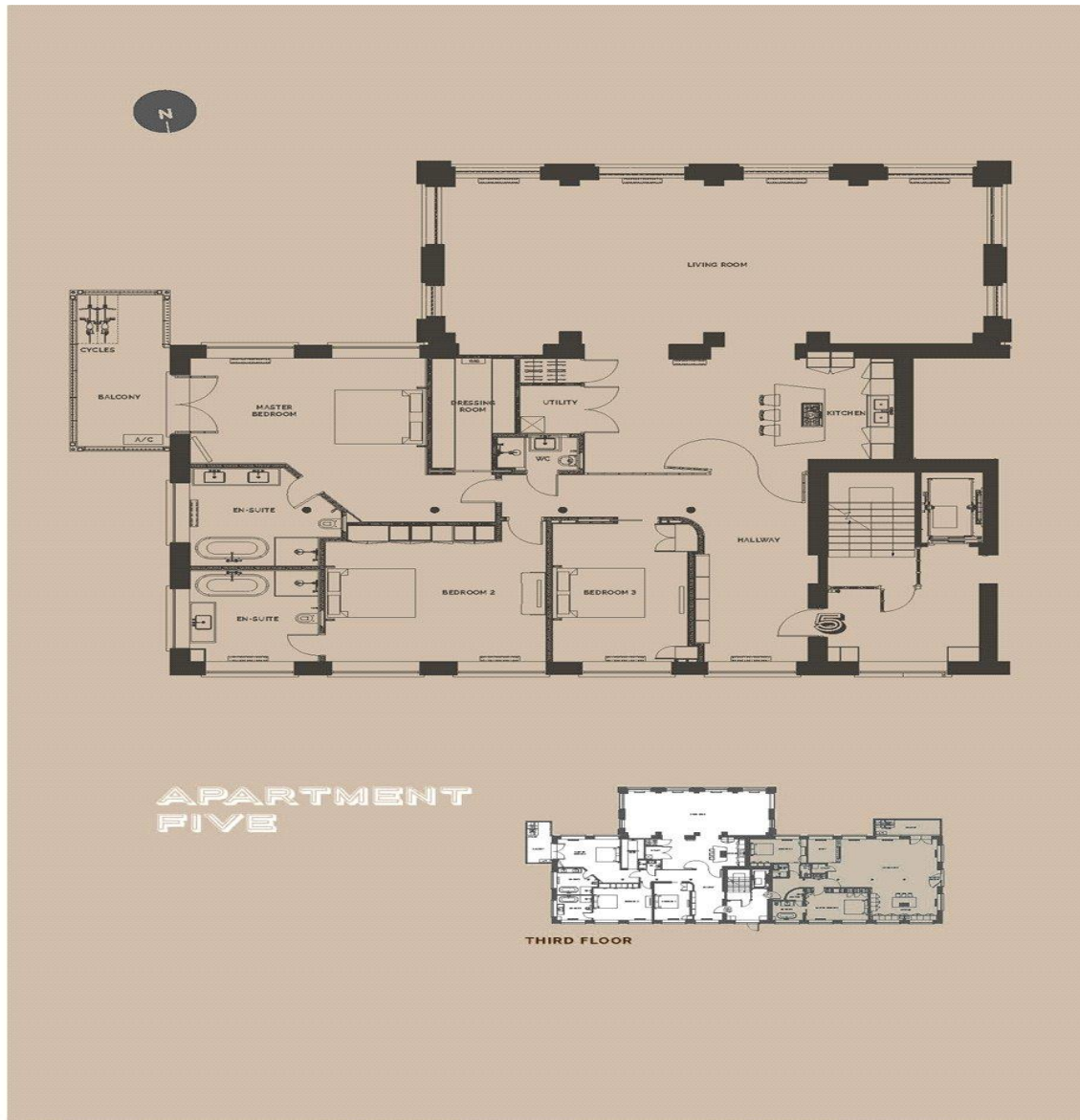
ASTON CHASE



ASTON CHASE



ASTON CHASE



Energy Efficiency Rating		
	Current	Potential
<i>Very energy efficient - lower running costs</i>		
(92+) A		
(81-91) B	85	86
(69-80) C		
(55-68) D		
(39-54) E		
(21-38) F		
(1-20) G		
<i>Not energy efficient - higher running costs</i>		
England, Scotland & Wales	EU Directive 2002/91/EC	

67-71 Park Road
Regent's Park
London NW1 6XU

020 7724 4724

astonchase.com



IMPORTANT NOTICE

These particulars are a guide given in good faith and are believed to be correct at the time of printing. Aston Chase give no representation as to their accuracy and potential purchasers or tenants must satisfy themselves by inspection or otherwise as to their correctness. No employee of Aston Chase has authority to make or give any representation or warranty in relation to this property.