

# ASTON CHASE



**WARWICK AVENUE**  
Maida Vale, London, W9

**ASKING PRICE**  
£1,650 per week

# ASTON CHASE

## WARWICK AVENUE

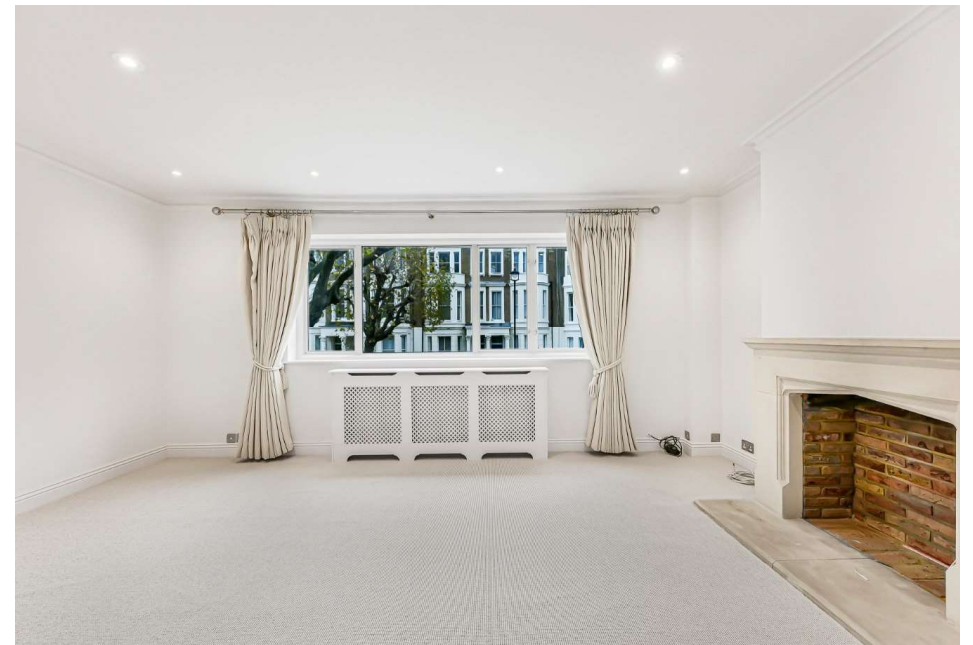
A modern terraced townhouse in Little Venice, offering deceptively spacious accommodation 2,041 sq.ft / 190 sq.m set over four floors, with parking for 2 cars and a garden. This ideal family house offers flexibly arranged accommodation, either as four or five bedrooms and two to three reception rooms. There is also good size kitchen/breakfast room that opens onto the rear garden. The house is located close to Formosa Street's local shops. The nearest tube station is Warwick Avenue Bakerloo line (0.2 miles), Paddington mainline and underground stations are about 0.6 miles. Pet Friendly.

## ACCOMMODATION

4/5 Bedrooms, 2 En-Suite Bathrooms, Family Bathroom, Open Plan Kitchen/Dining Room, 2 Reception Rooms, Parking for 2 cars

## AMENITIES

Off street parking for 2 car  
Private rear decked garden



# ASTON CHASE



# ASTON CHASE



# Warwick Avenue, W9

2,041 sq ft (190 sq m) - Includes reduced Height Areas

For identification purposes only. Not to scale

© Redinventory 2011.



# ASTON CHASE



67-71 Park Road  
Regent's Park  
London NW1 6XU

020 7724 4724

astonchase.com



## IMPORTANT NOTICE

These particulars are a guide given in good faith and are believed to be correct at the time of printing. Aston Chase give no representation as to their accuracy and potential purchasers or tenants must satisfy themselves by inspection or otherwise as to their correctness. No employee of Aston Chase has authority to make or give any representation or warranty in relation to this property.