

ASTON CHASE



THE YOO BUILDING
St. John's Wood, NW8

ASKING PRICE
£1,100 per week

ASTON CHASE

HALL ROAD

A beautifully presented two bedroom duplex apartment (126.4 sq m/1,361 sq ft), set on the second floor of this landmark Phillippe Starck designed building. Featuring a 25x23ft 'L' shaped reception room/kitchen with double height ceilings, two double en-suite bedrooms, two bathrooms, allocated secure off street parking, lift and 24 hour concierge service.

The Yoo Building is superbly located on Hall Road, within close proximity to both Little Venice and St John's Wood, including the boutiques and cafés of Clifton Road and St John's Wood High Street, the Paddington Recreation Ground, Regents Park and both Warwick Avenue and St John's Wood Underground Stations (Bakerloo & Jubilee Lines).

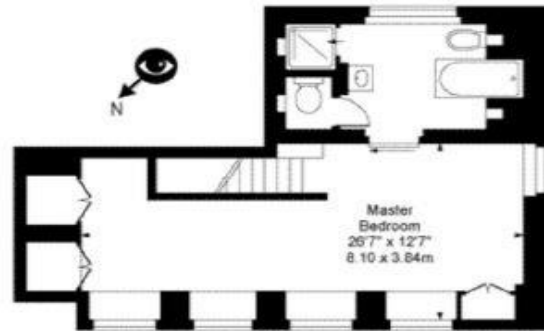


ASTON CHASE



ASTON CHASE





Third Floor



Second Floor

Approx Gross Internal Area 1361 Sq Ft - 126.44 Sq M

67-71 Park Road
Regent's Park
London NW1 6XU

020 7724 4724

astonchase.com



IMPORTANT NOTICE

These particulars are a guide given in good faith and are believed to be correct at the time of printing. Aston Chase give no representation as to their accuracy and potential purchasers or tenants must satisfy themselves by inspection or otherwise as to their correctness. No employee of Aston Chase has authority to make or give any representation or warranty in relation to this property.