



RANDOLPH CRESCENT

Little Venice
London
W9

Asking Price
£1,850,000

Sole Agent

This immaculate and grandiose two/three-bedroom, first-floor period conversion, measuring (116.78 sq m/ 1,257 sq ft), is situated on Randolph Crescent, widely regarded as one of the most sought-after streets in Little Venice. The elegant apartment features sophisticated interiors and access to the highly desirable 'Crescent communal gardens'.

ASTON CHASE

67-71 Park Road
Regent's Park
London, NW1 6XU
020 7724 4724
enquiries@astonchase.com

astonchase.com

RANDOLPH CRESCENT

Little Venice
London
W9

Asking Price
£1,850,000
Subject To Contract

Sole Agent

Leasehold 83 Years remaining
(In the process of being extended
to 955 Years)

Service Charge: £5,732.07

The accommodation comprises two/three bedrooms, two bathrooms (one of which is en-suite), a large reception room, and a separate kitchen. The property is characterised by its high ceilings, period details, and bright living spaces that overlook the stunning private gardens.

This exceptional period property is ideally located in the heart of Little Venice, close to local amenities including Warwick Avenue and Maida Vale stations (Bakerloo Line), the picturesque canals, waterside cafés, and the eclectic selection of shops along Clifton Road.



ASTON CHASE

67-71 Park Road
Regent's Park
London, NW1 6XU
020 7724 4724
enquiries@astonchase.com

astonchase.com

ACCOMMODATION

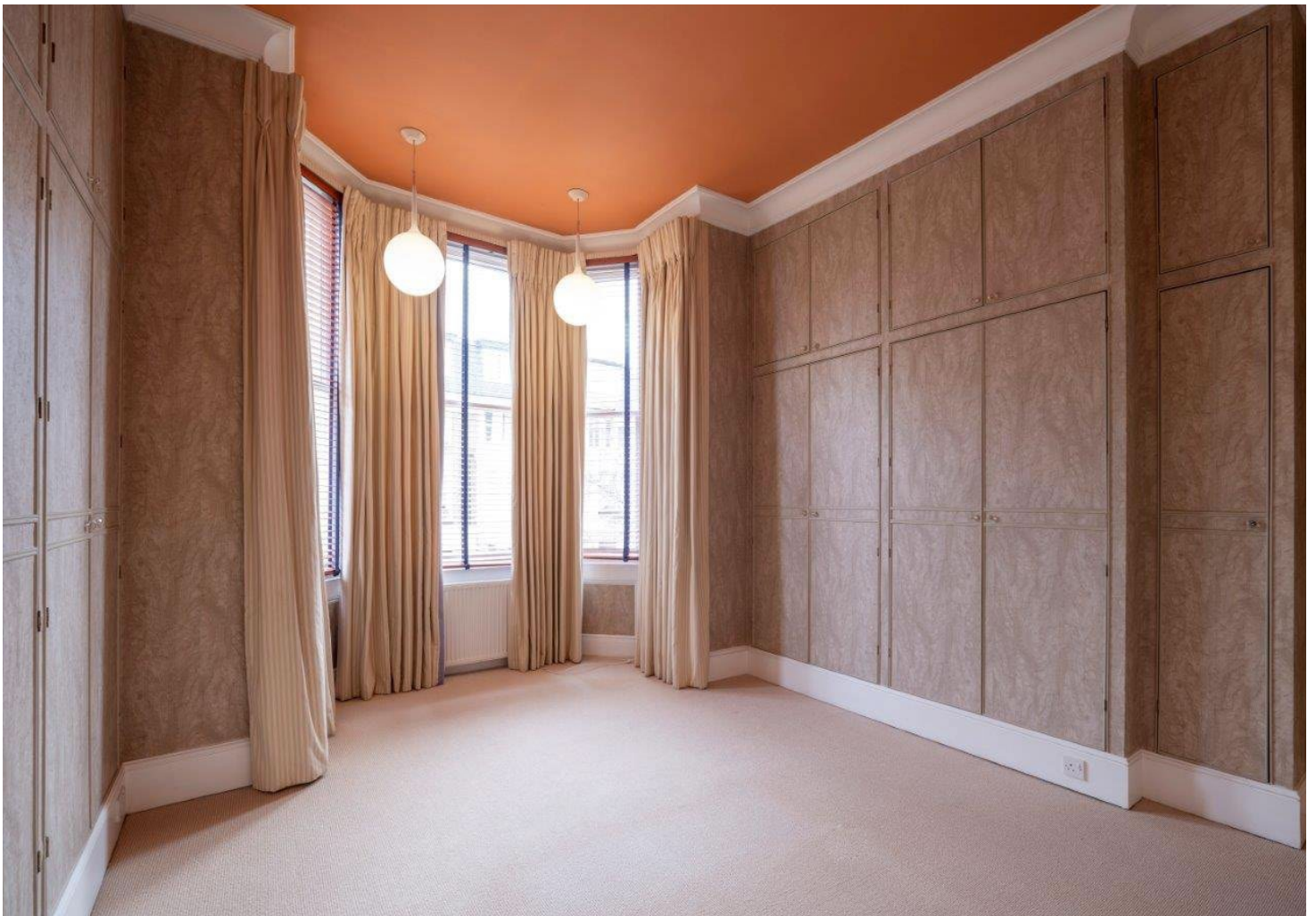
- Principal bedroom with en-suite shower room
- 1/2 further bedrooms
- Reception room
- Dining room
- Bathroom

AMENITIES

- Communal gardens
- Passenger Lift
- First Floor with High Ceilings
- Entry Phone
- Residents Parking

COUNCIL TAX: G

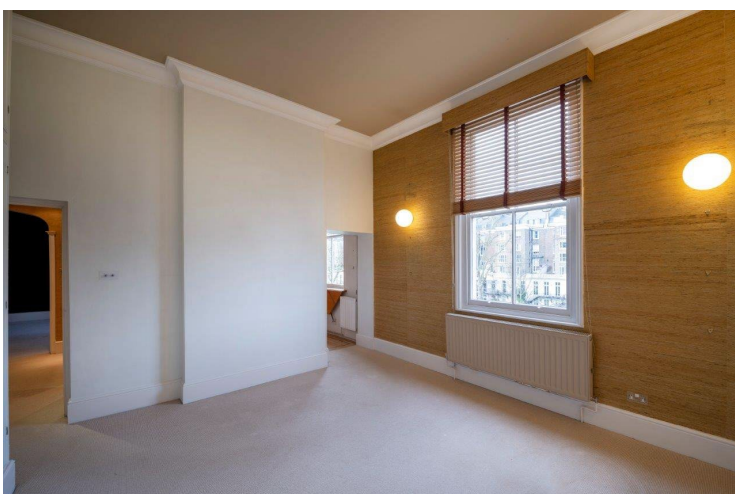
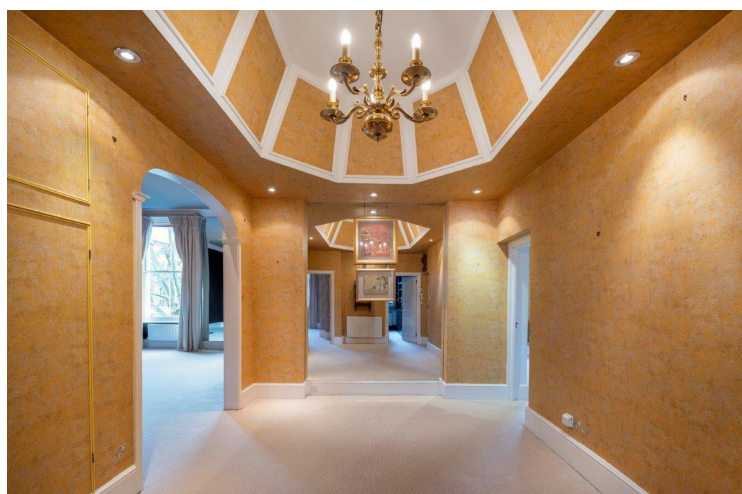
EPC RATING: TBC



ASTON CHASE

67-71 Park Road
Regent's Park
London, NW1 6XU
020 7724 4724
enquiries@astonchase.com

astonchase.com



ASTON CHASE

67-71 Park Road
Regent's Park
London, NW1 6XU
020 7724 4724
enquiries@astonchase.com

astonchase.com

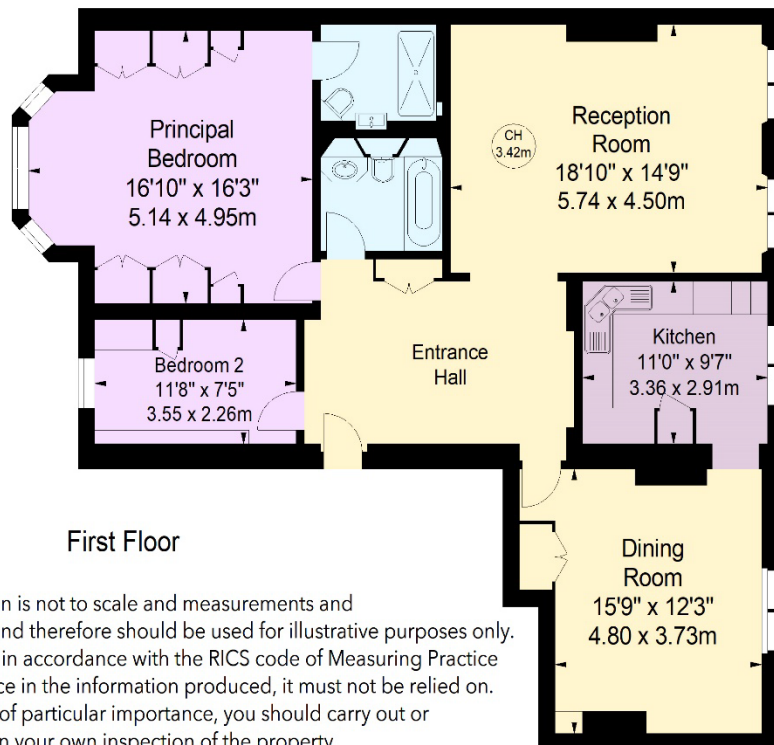
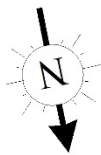


Randolph Crescent, W9

Approximate gross internal area

1257 sq ft / 116.78 sq m

Key :
CH - Ceiling Height



First Floor

The floor plan is not to scale and measurements and areas shown are approximate and therefore should be used for illustrative purposes only.

The plan has been prepared in accordance with the RICS code of Measuring Practice and whilst we have confidence in the information produced, it must not be relied on.

If there is any aspect of particular importance, you should carry out or commission your own inspection of the property.

© Orange Tree Photography

Important Notice

These particulars have been prepared in all good faith to give a fair overall view of the property and must not be relied upon as statements or representations of fact. Purchasers must satisfy themselves by inspection or otherwise regarding the items mentioned below and as to the content of these particulars. If any points are particularly relevant to your interest in the property ask for further information.