

ASTON CHASE



HIGH BEECHES

West Heath Road, Hampstead, NW3

ASTON CHASE

HIGH BEECHES

An outstanding three bedroom duplex apartment (2712 sqft / 274.43 sqm) with terraced garden in High Beeches, a sophisticated brand-new development of six apartments in West Heath Road, Hampstead.

This stylish, modern apartment has been finished to the highest standards, with bespoke fitted kitchens, underfloor heating, double glazed sash windows and air conditioning.

The apartment comprises three double bedrooms, three bathrooms (two en-suite), a spacious open plan kitchen / dining room, a second reception room with patio doors leading onto a spacious terraced garden, a separate utility room, Guest WC and ample storage. The flat also comes with one off-street garaged parking space, and communal garden.

ACCOMMODATION

3 Bedrooms | 3 bathrooms | Guest WC | Reception Room |
Kitchen/Dining Room | Utility Room | Patio |

AMENITIES

Air Conditioning
Off Street Parking
Communal Gardens



ASTON CHASE



ASTON CHASE

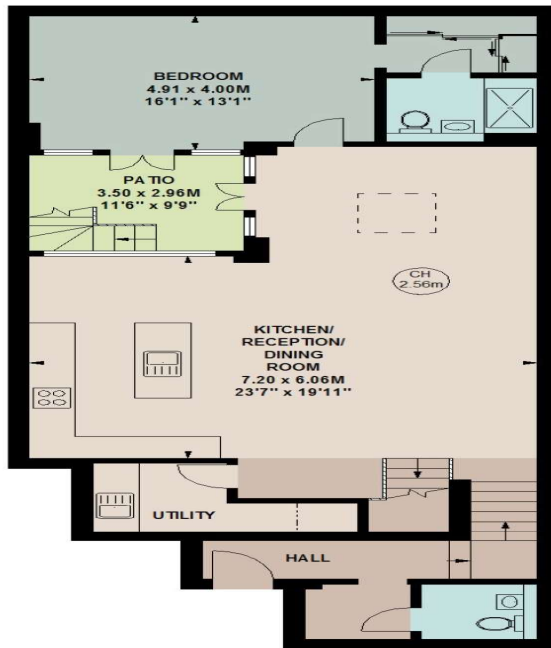


High Beeches, NW3

Approximate gross internal area

251.94 sq m / 2712 sq ft

Key:
CH - Ceiling Height



1204 sq ft
Lower Ground Floor



1508 sq ft
Ground Floor

The floor plan is not to scale and measurements and areas shown are approximate and therefore should be used for illustrative purposes only. The plan has been prepared in accordance with the RICS code of Measuring Practice and whilst we have confidence in the information produced, it must not be relied on. If there is any aspect of particular importance, you should carry out or commission your own inspection of the property.
Copyright of Stu J Beesley.

Energy Efficiency Rating

| | Current | Potential |
|---|----------------------------|-----------|
| Very energy efficient - lower running costs | | |
| (92+) A | | |
| (81-91) B | 85 | 85 |
| (69-80) C | | |
| (55-68) D | | |
| (39-54) E | | |
| (21-38) F | | |
| (1-20) G | | |
| Not energy efficient - higher running costs | | |
| England, Scotland & Wales | EU Directive 2002/91/EC | |

67-71 Park Road
Regent's Park
London NW1 6XU

020 7724 4724

astonchase.com



IMPORTANT NOTICE

These particulars are a guide given in good faith and are believed to be correct at the time of printing. Aston Chase give no representation as to their accuracy and potential purchasers or tenants must satisfy themselves by inspection or otherwise as to their correctness. No employee of Aston Chase has authority to make or give any representation or warranty in relation to this property.