

# ASTON CHASE



**MARESFIELD GARDENS**  
Hampstead, NW3

**ASKING PRICE**  
£3,250 per month

# ASTON CHASE

## MARESFIELD GARDENS

A truly charming example of the perfect Hampstead apartment. This beautifully presented two-bedroom, two-bathroom flat is set within a professionally managed, elegant period conversion comprising just five residences, offering a sense of exclusivity, security and character. The apartment benefits from its own private entrance and boasts a stunning, private terrace, perfect for enjoying the sunshine. With its blend of period charm and modern convenience, this is a home to be proud of.

Ideally located on Maresfield Gardens, opposite the blue-plaque Freud museum, the property provides excellent transport links, with Swiss Cottage and Finchley Road stations (Jubilee and Metropolitan Lines) as well as Finchley Road & Frognal (Overground) all within easy reach. The apartment is also well positioned for renowned local schools. The vibrant cafés and boutiques of Hampstead Village, the stylish charm of Belsize Park, and the many amenities of the O2 Centre are all just a short walk away.

## ACCOMMODATION

Private Entrance

Large patio Garden

Open plan reception room / kitchen

Principal bedroom with storage

Second bedroom with ensuite

Utility room

Family bathroom

## AMENITIES

Secluded spacious lower patio

Private Entrance



# ASTON CHASE

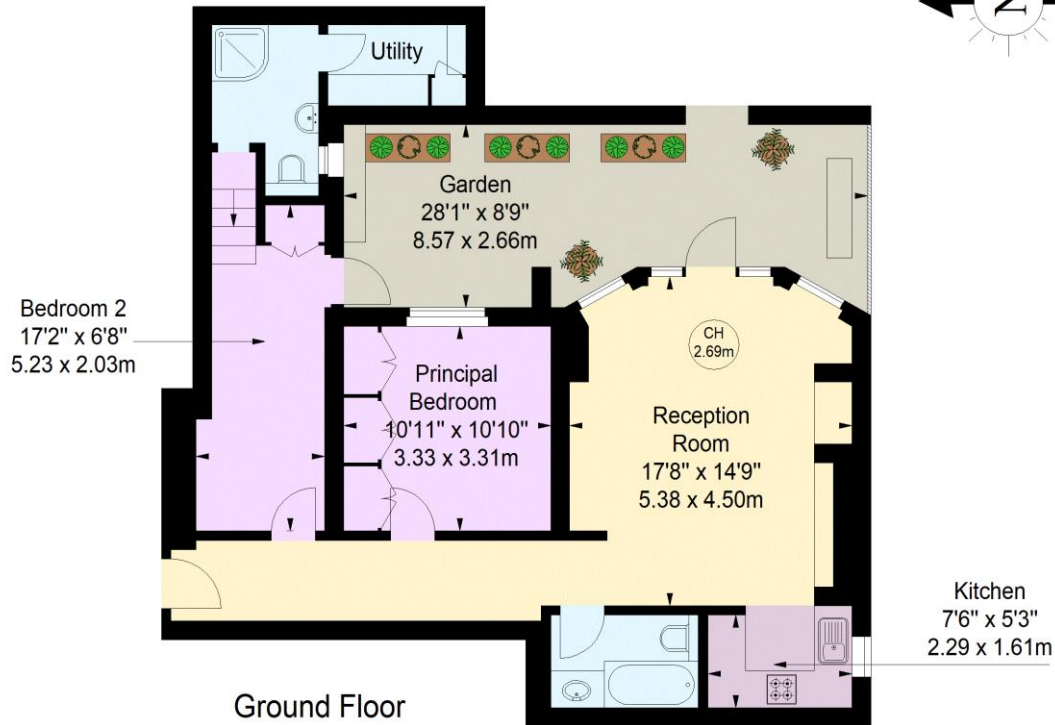
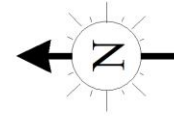


## Maresfield Gardens, NW3

Approximate gross internal area

70.79 sq m / 762 sq ft

Key :  
CH - Ceiling Height



Ground Floor



Illustration For Identification Purposes Only.

All measurements and areas are approximate, not to scale.

© Orange Tree Photography

### IMPORTANT NOTICE

These particulars are a guide given in good faith and are believed to be correct at the time of printing. Aston Chase give no representation as to their accuracy and potential purchasers or tenants must satisfy themselves by inspection or otherwise as to their correctness. No employee of Aston Chase has authority to make or give any representation or warranty in relation to this property.