

ASTON CHASE



AVENUE ROAD
St John's Wood, NW8

ASKING PRICE
£1,570 per week

ASTON CHASE

AVENUE ROAD

Situated on the second floor of this luxury, gated development with access via a communal passenger lift, is this beautifully designed two bedroom, two bathroom lateral apartment spanning 993 sq ft.

This exquisite and spacious apartment comprises two well proportioned double bedrooms, both with en-suite bathrooms, a spacious open plan reception room / kitchen. Further benefits include a roof terrace, guest wc, ample storage, comfort cooling and one off-street parking space.

Located on the desirable east side of St. John's Wood, the property is ideally situated for the local amenities of St. John's Wood High Street (approximately 0.3 miles walk), Primrose Hill (approximately 0.3 miles walk) and Regent's Park (approximately 0.1 miles walk) where one can find an abundance of shops, cafes, restaurants and green spaces.

ACCOMMODATION

Two bedrooms, Two Ensuite Bathrooms, Separate guest Wc, Open plan Reception Room, and Kitchen/Dining, Roof Terrace

AMENITIES

Off Street Parking For One Car
Comfort Cooling Throughout
Large Patio Garden



ASTON CHASE



ASTON CHASE



Avenue Road, NW8

Approximate gross internal area

92.25 sq m / 993 sq ft

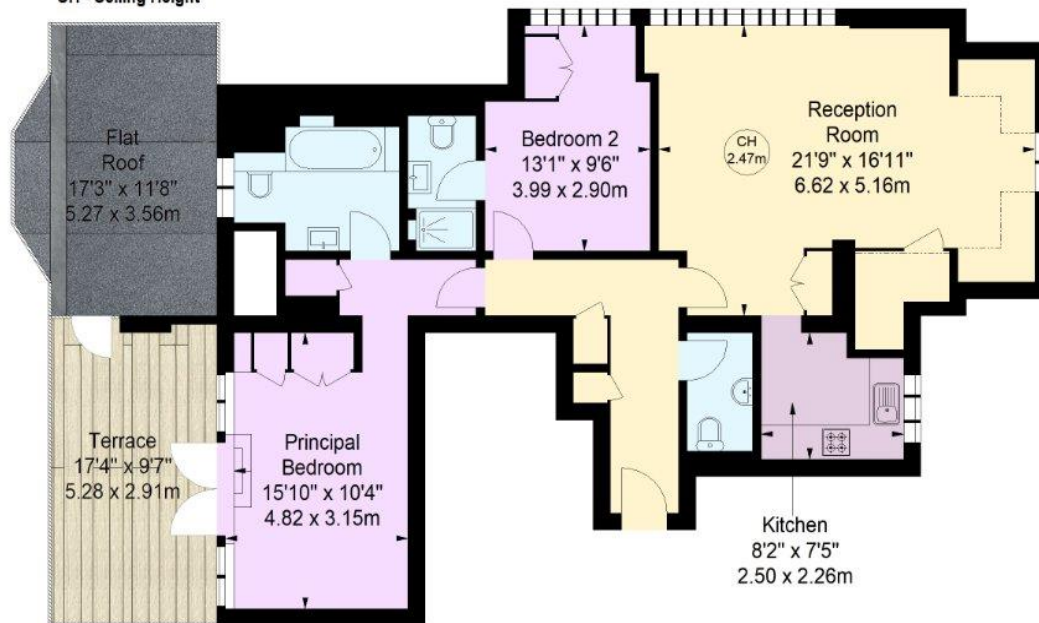
(Including Restricted Height Under 1.5m)

Restricted Height Under 1.5m

5.02 sq m / 54 sq ft



Key :
CH - Ceiling Height



Second Floor



Illustration For Identification Purposes Only.
All measurements and areas are approximate, not to scale.
© Orange Tree Photography

ASTON CHASE

IMPORTANT NOTICE

These particulars are a guide given in good faith and are believed to be correct at the time of printing. Aston Chase give no representation as to their accuracy and potential purchasers or tenants must satisfy themselves by inspection or otherwise as to their correctness. No employee of Aston Chase has authority to make or give any representation or warranty in relation to this property.