



BURDETT MEWS

Belsize Crescent
London
NW3

Asking Price
£1,800,000

Sole Agent

An exquisite four bedroom, three bathroom house located within Burdett Mews, in the heart of Belsize Village. The house offers a rare combination of privacy, elegance, and convenience. Nestled within a gated community of charming homes, the property spans 1,331 sq ft (123.65 sqm) and is set over two thoughtfully designed floors.

On the ground floor, the open-plan reception and dining area seamlessly connect to an open plan fully fitted kitchen, creating a perfect space for both relaxing and entertaining. A separate utility room adds practicality, while a fourth bedroom with an en-suite shower room provides flexible accommodation for guests, family, or home office use.

ASTON CHASE

67-71 Park Road
Regent's Park
London, NW1 6XU
020 7724 4724
enquiries@astonchase.com

astonchase.com

BURDETT MEWS

Belsize Crescent
London
NW3

Asking Price
£1,800,000
Subject To Contract

Sole Agent

Freehold

The first floor comprises the principal bedroom suite featuring a spacious dressing room and an en-suite bathroom, two further double bedrooms, served by a stylish family bathroom.

The property benefits from off-street parking for one vehicle within the gated mews, providing both security and convenience.

Belsize Village's charming local shops, cafes, and excellent transport links are just moments away, while the gated setting ensures peace and quiet.

Finished to an excellent standard, with an optimal internal layout, prime location, and impeccable design, this home is an exceptional opportunity for those seeking both comfort and sophistication in one of North West London's most desirable neighbourhoods.



ASTON CHASE

67-71 Park Road
Regent's Park
London, NW1 6XU
020 7724 4724
enquiries@astonchase.com

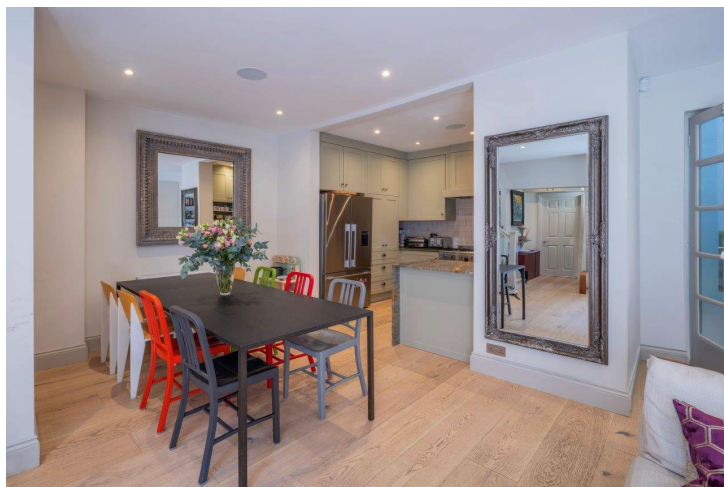
astonchase.com

ACCOMMODATION/AMENITIES

- Principal bedroom with dressing room and en-suite bathroom
- 3 further bedrooms (one with en-suite shower room)
- Family bathroom
- Reception/dining room
- Utility room
- Off-street parking for one vehicle
- Air conditioning in both principal bedroom and bedroom 2

COUNCIL TAX: G

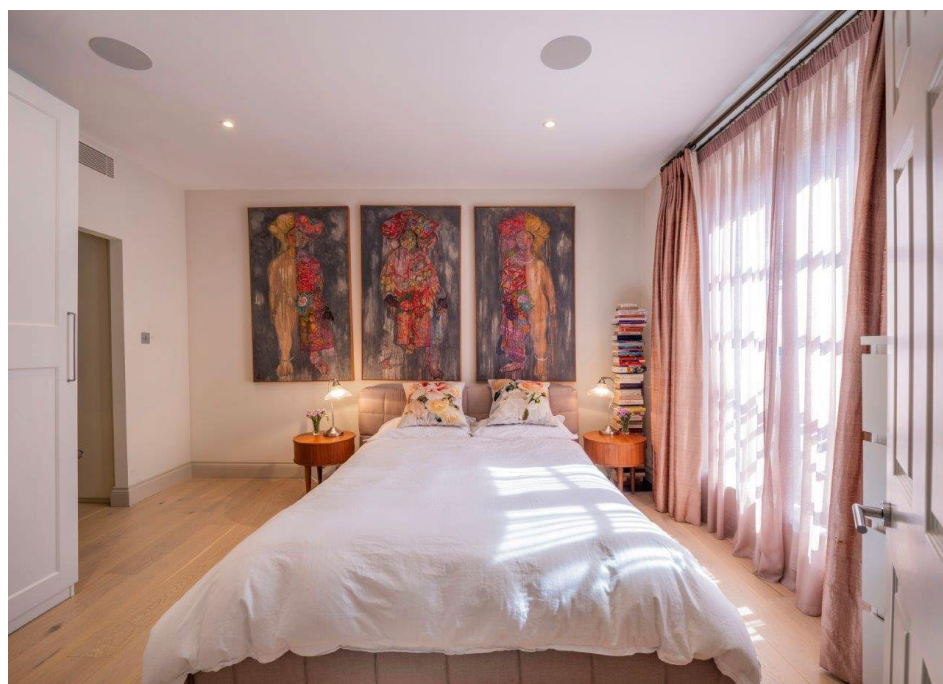
EPC RATING: D



ASTON CHASE

67-71 Park Road
Regent's Park
London, NW1 6XU
020 7724 4724
enquiries@astonchase.com

astonchase.com



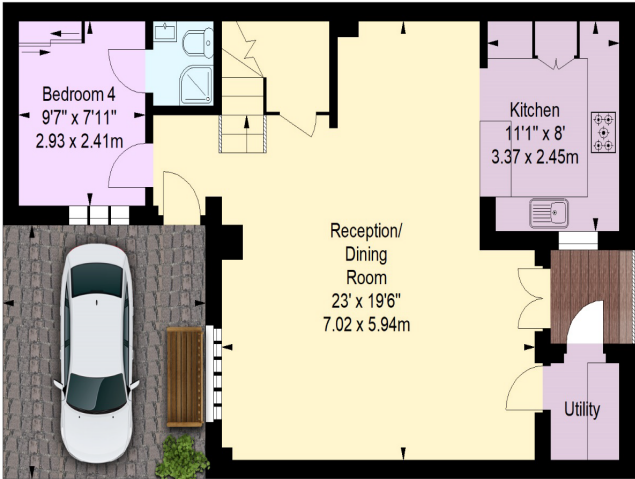
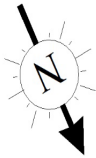
ASTON CHASE

67-71 Park Road
Regent's Park
London, NW1 6XU
020 7724 4724
enquiries@astonchase.com

astonchase.com

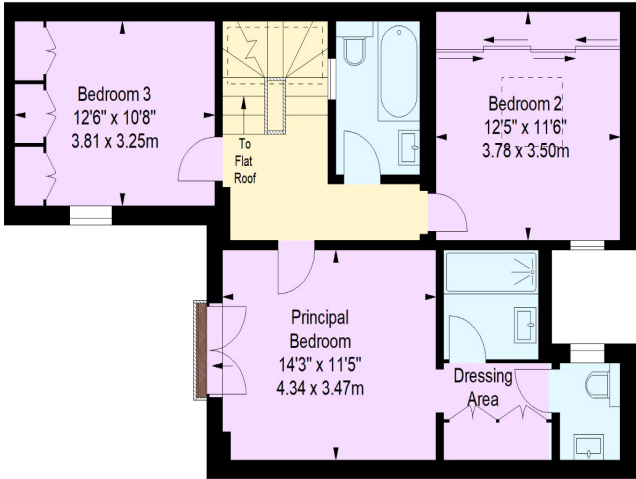


Burdett Mews,
Belsize Park, NW3
Approximate gross internal area
123.65 sq m / 1331 sq ft



Driveway
13' x 12'6"
3.95 x 3.81m

Ground Floor



First Floor



Illustration For Identification Purposes Only.
All measurements and areas are approximate, not to scale.
© Orange Tree Photography

Score	Energy rating	Current	Potential
92+	A		
81-91	B		84 B
69-80	C		
55-68	D	65 D	
39-54	E		
21-38	F		
1-20	G		



Important Notice
These particulars have been prepared in all good faith to give a fair overall view of the property and must not be relied upon as statements or representations of fact. Purchasers must satisfy themselves by inspection or otherwise regarding the items mentioned below and as to the content of these particulars. If any points are particularly relevant to your interest in the property ask for further information.