

# ASTON CHASE



**OCTAVIAN HOUSE**  
Alexandra Road, NW8

# ASTON CHASE

## OCTAVIAN HOUSE

Presenting this beautifully finished two-bedroom apartment, measuring approximately 1,006 sq ft (94 sq m), situated on the ground floor of the sought-after Octavian House on Alexandra Road. The property offers two generously proportioned double bedrooms with fitted wardrobes, two contemporary bathrooms including one en-suite, and a bright open-plan kitchen and reception room designed for modern living. From here, doors open directly onto a private terrace which extends to the landscaped communal gardens, creating a seamless blend of indoor and outdoor space. Ample built-in storage further enhances the practicality of this stylish home.

Ideally located just moments from the boutiques, cafés and amenities of South Hampstead High Street, the apartment is also within easy reach of South Hampstead Overground Station and Swiss Cottage Underground Station (Jubilee Line), ensuring excellent transport links across London.

## ACCOMMODATION

Primary bedroom with ensuite

Second bedroom

Family bathroom

Large open plan kitchen / reception space

Private Patio garden

Large communal gardens

## AMENITIES

Communal Gardens

Private Patio



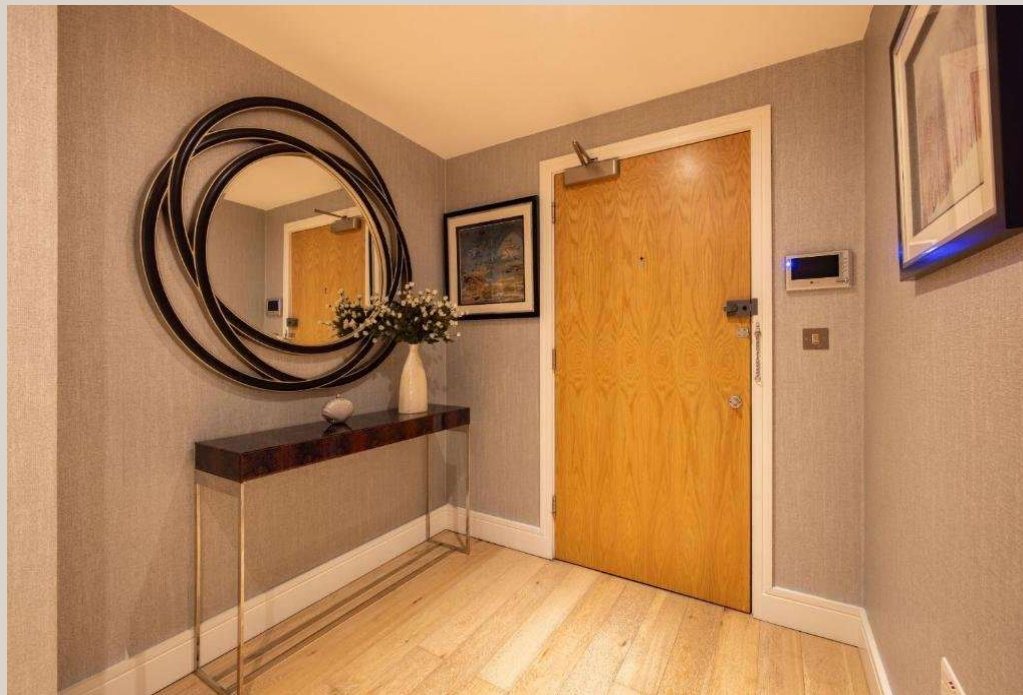


# ASTON CHASE





# ASTON CHASE



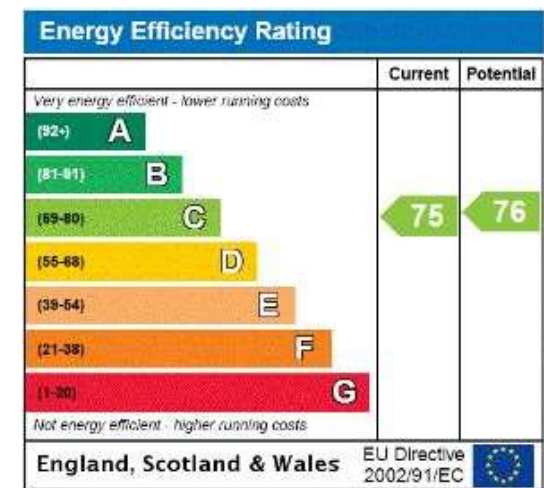
# ASTON CHASE



Octavian House, Alexandra Road, NW8

Total Gross Area: 1006 ft<sup>2</sup> ... 93.5 m<sup>2</sup> (excluding terrace)  
C.H : Ceiling Height

All measurements are approximate and for identification guideline purposes only, not to scale.  
Compliant with the RICS code of measuring practice



67-71 Park Road  
Regent's Park  
London NW1 6XU

020 7724 4724

astonchase.com



## IMPORTANT NOTICE

These particulars are a guide given in good faith and are believed to be correct at the time of printing. Aston Chase give no representation as to their accuracy and potential purchasers or tenants must satisfy themselves by inspection or otherwise as to their correctness. No employee of Aston Chase has authority to make or give any representation or warranty in relation to this property.