



## ELIZABETH COURT

1 Palgrave Gardens  
Marylebone  
NW1

Asking Price  
£550,000

Sole Agent

A bright and spacious one bedroom apartment (46.64 sq m / 502 sq ft) located on the first floor within this popular gated Development.

# ASTON CHASE

67-71 Park Road  
Regent's Park  
London, NW1 6XU  
020 7724 4724  
[enquiries@astonchase.com](mailto:enquiries@astonchase.com)

[astonchase.com](http://astonchase.com)

## ELIZABETH COURT

1 Palgrave Gardens  
Marylebone  
NW1

Asking Price  
£550,000  
Subject To Contract

Sole Agent

Share of Freehold

Service Charge: £6,000 P/A  
Ground Rent: Peppercorn

This apartment features an open plan kitchen/reception room with a balcony, double bedroom with in-built wardrobes, family bathroom and extra storage space. The apartment also benefits from an designated underground parking space, 24 hour concierge, gym facilities, a swimming pool and allocated underground parking.



# ASTON CHASE

67-71 Park Road  
Regent's Park  
London, NW1 6XU  
020 7724 4724  
[enquiries@astonchase.com](mailto:enquiries@astonchase.com)

[astonchase.com](http://astonchase.com)

## ACCOMMODATION

- Open Plan Kitchen/Reception Room
- Double Bedroom
- Family Bathroom
- Storage

## AMENITIES

- 24 Hour Concierge
- Swimming Pool
- Gym Facilities
- Underground Parking for One Car
- Gated Development

COUNCIL TAX: F

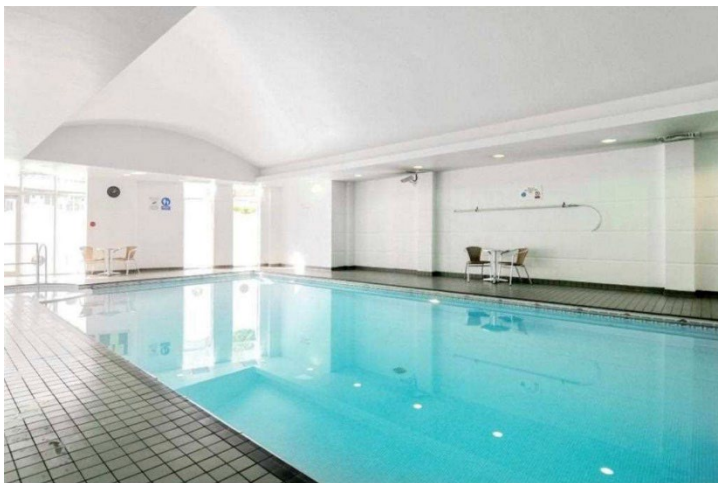
EPC RATING: C



# ASTON CHASE

67-71 Park Road  
Regent's Park  
London, NW1 6XU  
020 7724 4724  
[enquiries@astonchase.com](mailto:enquiries@astonchase.com)

[astonchase.com](http://astonchase.com)



Elizabeth Court,  
Palgrave Gardens, NW1  
Approximate gross internal area  
46.64 sq m / 502 sq ft

Key :  
CH - Ceiling Height

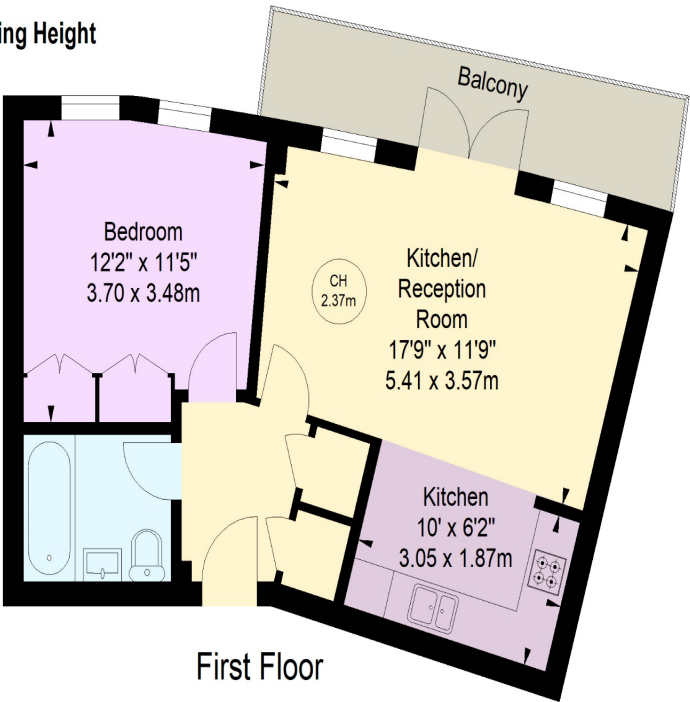


Illustration For Identification Purposes Only.  
All measurements and areas are approximate, not to scale.  
© Orange Tree Photography

Score	Energy rating	Current	Potential
92+	A		
81-91	B		
69-80	C	79 C	81 B
55-68	D		
39-54	E		
21-38	F		
1-20	G		



**Important Notice**  
These particulars have been prepared in all good faith to give a fair overall view of the property and must not be relied upon as statements or representations of fact. Purchasers must satisfy themselves by inspection or otherwise regarding the items mentioned below and as to the content of these particulars. If any points are particularly relevant to your interest in the property ask for further information.